

# HISTORICAL INFORMATION

December 2007



Whakatane District Council Building 2007



Whakatane District Council



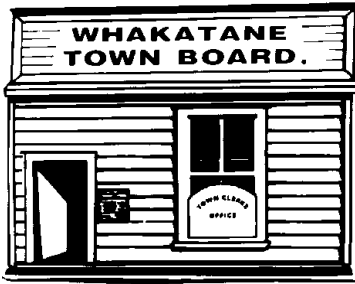
## **CONTENTS**

---

<b>Civic Buildings at Various Times .....</b>	<b>1</b>
<b>Whakatane Heads Through the Years .....</b>	<b>2</b>
<b>Formation of Council .....</b>	<b>3</b>
<b>District Crest.....</b>	<b>3</b>
<b>Pohaturoa ("Long Rock") .....</b>	<b>3</b>
<b>Wairaka (Loved Ancestress of the Ngati Awa Tribe).....</b>	<b>4</b>
<b>History of Murupara .....</b>	<b>4</b>
<b>Evolution of Local Government Organisation in Whakatane District .....</b>	<b>5</b>
Whakatane County Council—1900–1976 .....	6
Whakatane Town Board—1914-1917 .....	7
Whakatane Borough Council—1917-1976.....	8
Whakatane District Council—1976–Present .....	9
Murupara Town Council and Borough Council.....	10
Whakatane Harbour Board.....	11
Staff and Councillors, Whakatane District Council .....	12
<b>Flag Days .....</b>	<b>14</b>
<b>Occasions on Which Flags are Flown at Half-Mast on Government Buildings ...</b>	<b>16</b>
<b>Royal Visits .....</b>	<b>16</b>

# CIVIC BUILDINGS AT VARIOUS TIMES

---



*Whakatane Town Board*

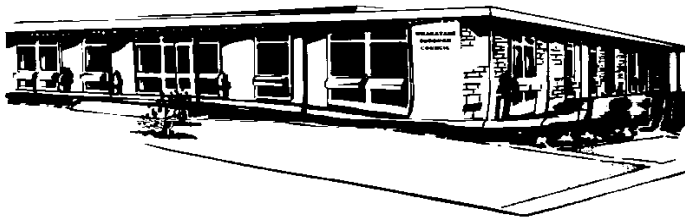
Occupied from \_\_\_\_\_

To \_\_\_\_\_

*Whakatane Borough Council*

Occupied from \_\_\_\_\_

To \_\_\_\_\_



*Whakatane District Council*

Occupied from \_\_\_\_\_

Destroyed by fire : \_\_\_\_\_

*Murupara Civic Centre*

Occupied from: \_\_\_\_\_

To the present



*Whakatane Civic Centre*

Occupied from \_\_\_\_\_

To the present

## WHAKATANE HEADS THROUGH THE YEARS

---

1913



(1913 and 1930s  
photographs—Whakatane  
District Museum and Gallery)

1930s



2000



## FORMATION OF COUNCIL

---

The first Whakatane County Council was formed in 1876 and covered generally the areas of the present Opotiki and Whakatane Districts. The Council was administered from, and met, in Opotiki. In 1900 this Council split and became the Opotiki County Council and the second Whakatane County Council. The Whakatane Road Board was formed circa 1876 and was administered from, and met in, Whakatane. It was disbanded in 1899 and in 1900 became incorporated into the second Whakatane County Council. The second Whakatane County Council took care of all Local Government matters until 1917, when the Whakatane Borough Council and the third Whakatane County Council were formed. These two bodies, together with the Whakatane Harbour Board, amalgamated in 1976 to become the Whakatane District Council. In 1989, pursuant to the Local Government re-organisation undertaken at that time, the Whakatane District Council amalgamated with the Murupara Borough Council and also took into its District a portion of the Opotiki District in the Waimana/Nukuhou area and a portion of the Taupo District comprising a large part of the Kaingaroa Forest.

## DISTRICT CREST

---

More than 800 years ago, according to legend, Toi, known as Toitehuatahi, the "first born", set out from Hawaii in search of his missing grandson, Whatonga, whose canoe had been blown by a storm to New Zealand. Toi also reached New Zealand and settled near Whakatane Heads. In this country he became known as Toikairakau, the "wood-eater", because he lived on forest foods. He is the reputed ancestor of several East Coast Māori tribes.



Toi's voyage to New Zealand is dated 1150 AD. Two hundred years later the "Great Fleet" is said to have reached this country. Among the original canoes was "Mataatua" under the command of Toroa, which entered the mouth of the Whakatane River. The cry of "*ka whakatane au i ahau*", uttered by Wairaka in saving the canoe from disaster, forms the motto of both the District Crest and the Whakatane High School. Toikairakau, too, is commemorated on the Crest, which shows a large Māori canoe approaching Pohaturua at the entrance to the town.

## POHATUROA ("LONG ROCK")

---

This arresting block of weatherworn greywacke was once joined to the escarpment behind it by a low ridge while the tide washed its northerly base.

For at least 600 years it has been revered by the Ngati Awa tribespeople of Whakatane as a sacred spot dedicated wholly to the gods, and protected by the strictest laws of tapu. In earlier times its higher levels served as repository shelves for the bones of the illustrious dead.

The tunnel in one end was once a cave, where the tribal tohunga or priests tattooed generations of young warriors with the battle moko as an initiation to manhood. At its mouth the waters of nearby Waiewe Stream (now channelled beneath the Strand) formed a pool in which every newborn child of the tribe was plunged in cold baptism, the males to the service of Tu, the War God, and the females to the same deity as potential mothers of warriors.

Pohaturua was also a recognised meeting place for discussing important tribal matters, for greeting visitors and delegates, and for settling inter-tribal relations. Its sanctity was widely recognised. The Treaty of Waitangi was signed in the vicinity by local chiefs in June 1840, and on the centenary of the signing a plaque was erected on the lawn at the base of the rock.

Also, near the base is a memorial erected to Te Hurinui Apanui, Paramount Chief of the Mataatua tribes, who died in 1924.

Pohaturua was made a "Rock of Remembrance of those of this country who fell in the Great War 1914-1918" when a War Memorial Plaque was fitted into the body of the Rock.

## ***WAIRAKA (LOVED ANCESTRESS OF THE NGATI AWA TRIBE)***

---

Of all their celebrated ancestors, the widespread Ngati Awa tribespeople love the high-spirited Wairaka best. She, the daughter of Toroa, captain-navigator of the Mataatua Canoe, also made the perilous voyage from Hawaiiki at the time of the Great Migration, 600 years ago.

Her behaviour and attitude mark her as a teenage rebel even in those days. When the Mataatua Canoe arrived, the men went ashore, leaving the women behind in the Canoe. The Canoe started drifting back out to sea. Wairaka's action in defying the tapu which forbade women to handle a canoe, by seizing a paddle and bringing the sea-worn canoe back to land, so inspired the crew that they called their new home "Whakatane" from her cry of "Ka whakatane au i ahau!" (*I will act the part of a man*).

Her refusal to marry the man of her father's choice, and her high-handed behaviour to win the man she really loved have also endeared her memory, and the main marae on the Whakatane foreshore bears her name to this day, while that of her eldest son, Tamatea-ki-Huatahi, labels the dining room and social hall.

Nothing could be more fitting, thought Sir William Sullivan when desiring to erect some memorial to his wife, than to raise a statue to Wairaka, whose energy and determination in the early days played such an important part in founding the settlement.

When it was unveiled at the Heads in 1965, special songs of praise were sung to the long-dead Wairaka by a Māori choir composed almost entirely of her descendants.

## ***HISTORY OF MURUPARA***

---

Murupara is situated in the valley of the Rangitaiki River just south of its junction with the Whirinaki River in the southern part of the District, approximately 86 kilometres south of Whakatane.

Murupara was built in the 1950s to house bush-gangs and as a railhead for logs going to the Pulp and Paper Mill at Kawerau.

Prior to 1 January 1955, Murupara was administered by the Whakatane County Council. However, in that year it was decided that an independent Town District should be created with a committee of five local men under a Town Commissioner appointed by the Crown.

By 1962 moves were afoot to have the Town Council constituted a Borough. At the Local Body Elections held October 1962, the first Mayor of Murupara, Mr A H Lynds, together with his newly formed Council of seven, was elected.

During 1960, plans and fund-raising to establish a Municipal Hall went steadily ahead and the hall was completed in 1962 at a cost of \$24,000. As well as the Town Hall, newly built Council Chambers were occupied during 1962.

The Post Office and a branch of the Bank of New Zealand, a theatre and an additional block of six shops were also under way. In the education field, a second primary school was opened in 1963, together with considerable extensions to the Rangitahi College.

Throughout the years the close association of the Borough with the Tasman Pulp and Paper Company's logging subsidiary, the Kaingaroa Logging Company Limited, was of prime importance, as the town had been the dormitory settlement for the Company.

With nearly eighty per cent of the population being of Māori descent, the place of Māoritanga in the community is evidenced by the fact that there are four marae in the district.

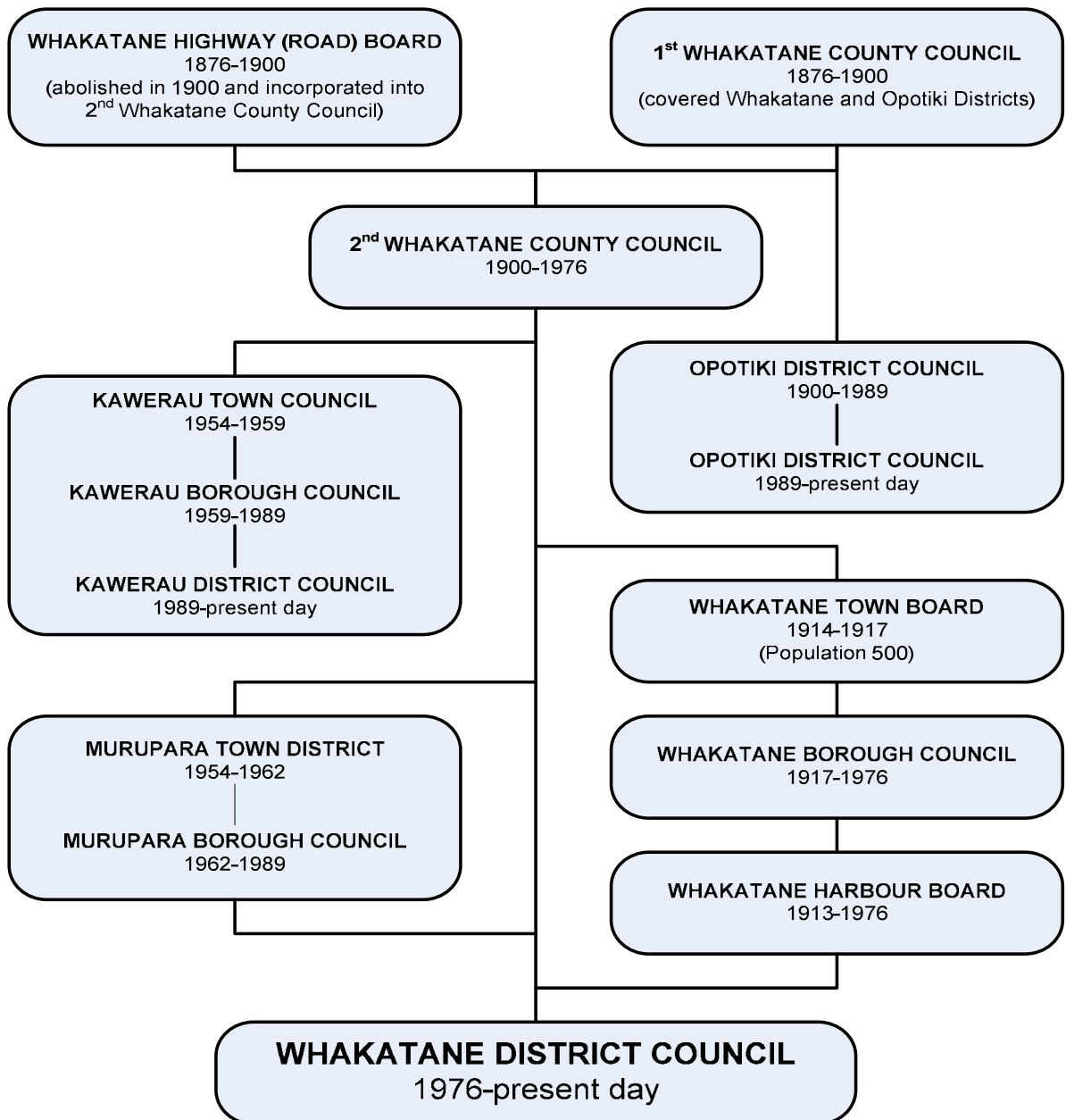
# EVOLUTION OF LOCAL GOVERNMENT ORGANISATION IN WHAKATANE DISTRICT



WHAKATANE COUNTY COUNCIL,  
1908



WHAKATANE DISTRICT COUNCIL,  
2004-07



## WHAKATANE COUNTY COUNCIL—1900–1976

First Meeting 21 March 1900

**COUNCILLORS** \*( Denotes Whakatane District Councillor)

1900-1901	Walmsley, H G	1917-1923	Gow, W B	1950-1953	Marx, O V
1900-1902	Brodrick, E	1919-1920	Phillips, W	1950-1965	Rangi, W
1900-1902	Stanley, R	1919-1928	Peebles, A	1950-1965	Steel, W D M
1900-1905	Moody, J	1920-1923	Hayward, F J	1953-1955	Marryatt, O V
1900-1917	Peebles, A	1920-1923	Platt, W G	1953-1956	Pearse, G K
1900-1947	Burt, F J	1920-1926	Savage, F J	1953-1965	Richardson, A L
1901-1902	Warbrick, J	1920-1932	Addison, W H	1954-1956	Reichardt, F
1902-1904	Addison, E S	1923-1926	Grieve, R E	1956-	Shaw, R B
1902-1905	Keegan, P	1923-1926	Mitchell, T	1956-1959	Whitham, G P M
1904-1905	Grieve, R P	1923-1926	Colebrook, G	1956-1965	Thompson, C E
1904-1911	O'Reilly, M	1923-1926	Luke, A L	1956-1968	Carling, A
1904-1939	Reid, W	1926-1929	Greig, H	1959-1962	Reichardt, F
1905-1907	Simpkins, G	1926-1929	Pearson, J	1959-1965	Orr, J
1905-1908	Seccombe, T	1926-1932	Baird, P L	1959-1976	Gow, J W *
1905-1911	Clay, E	1926-1932	Witthaus, E F	1962-1965	Whitham, G P M
1907-1908	Skipper, J	1926-1938	Grant, J	1965-1966	Davies, W
1908-1911	Spurr, J	1926-1943	Cliff-McCulloch, J	1965-1968	Reichardt, F
1908-1912	Brambley, J	1926-1947	McCracken, W A	1965-1968	Yeoman, G R
1910-1911	Keegan, P	1929-1938	Murray, W J	1965-1974	Baird P L (Jnr)
1910-1914	Yeoman, F C	1929-1956	Burnett, J L	1965-1974	Isley, G
1911-1914	Anderson, A	1930-1944	Smith, C T	1965-1976	McLean, A B *
1911-1914	Hallet, T	1932-1938	Fleming, R	1966-1973	Tumoana, K
1911-1914	Seccombe, T	1932-1950	Luxton, L W	1968-1971	Flight, A V
1911-1916	Munro, W D	1934-1935	White, C H	1968-1971	Mitchell, A M
1912-1914	Martin, D C	1935-1947	McCready, H C	1968-1976	Conn, L G *
1914-1917	Douglas, G	1938-1932	Spence, D W	1969-1976	Macdonald, K J *
1914-1917	Keegan, P	1938-1947	Cawte, T G H	1970-1976	Bloor, R J
1914-1917	Platt, W G	1938-1976	Wardlaw, R F *	1971-1973	Brown, A L
1914-1920	Wardlaw, W	1939-1953	McGougan, A F	1971-1976	Ewart, M *
1914-1923	McAlister, T T	1942-1950	Hunter, W	1973-1974	Brebner, H H
1914-1923	Murray, G J	1944-1959	Leslie, R C	1973-1976	Nikora, R R *
1916-1917	Anderson, D	1944-1970	Butler, D C	1974-1976	Fox, J S *
1917-1918	Nuku, R	1947-1953	Caverhill, K L	1974-1976	Gordon, J L S *
1917-1920	Feist, A M	1947-1953	Clark, W M	1974-1976	Hindmarsh, P C *
1917-1920	Hodgson, F	1947-1959	Wilson, J		
1917-1920	Newton, S F	1947-1969	Allan, D T		

### CHAIRMEN

		1955	Burnett, J L	1964-1976	Gray, J E
		1955-1959	Wardlaw, R F		
1900-1904	Peebles, A	1969-1971	Gow J W		
1904-1905	Moody, J	1971-1974	Baird, P L		
1905-1910	Peebles, A	1974-1976	Macdonald, K J *		
1911-1939	Reid, W				
1939-1940	Cliff-McCulloch, J G				
1941-1954	Burnett, J L				
1954-1970	Butler, D C				
1970-1971	Wardlaw, R F				
1971-1976	Gow, J W *				

### DEPUTY CHAIRMEN

No official appointment prior to 1949

1949-1954 Butler, D C

### COUNTY CLERKS

1900-1906	Buckworth, C M
1906-1907	Harron, P A
1907-1916	Garaway, H O
1916-1920	Robinson, H R
1929-1956	Lucas, C G
1956-1964	Briggs, E L

## **WHAKATANE TOWN BOARD—1914-1917**

---

*First meeting 27 August 1914*

### **MEMBERS**

1914-1916 Francis, T  
 1914-1916 Harker, G J K  
 1914-1916 James, T W  
 1914-1916 Kirk, T  
 1914-1916 Levy, E T  
 1914-1917 Flood, M J  
 1914-1917 Brabant, G A

*1 April 1915—*

*Town Board ceded from County of  
 Whakatane*

1916-1917 Buddle, L  
 1916-1917 Franklin, J  
 1916-1917 Ramson, M  
 1916-1917 Trembath, J  
 1917 Brown, E

### **CHAIRMEN**

1914-1916 Martin, D C  
 1916-1916 Levy, E T  
 1916-1917 Fleming, T J

### **SECRETARIES**

1914-1917 Reid, C  
 (also Engineer)  
 1917 Wheeler, J

## WHAKATANE BOROUGH COUNCIL—1917-1976

### COUNCILLORS (\* Denotes also Whakatane District Councillor)

1917-1919	Brown, E	1925-1950	Sullivan, W	1953-1956	Shaw, A B
1917-1919	Stewart, A O	1927-1931	Price R W	1953-1959	Patterson, J N
1917-1919	Witchell, C A	1927-1935	Moncur, A F	1953-1962	Brebner, C H
1917-1921	Barry, J T	1929-1931	Ramson, E J	1956-1959	Smith, N H
1917-1921	Kirk, T	1929-1933	Righton, A	1956-1959	Needham, K A
1917-1921	Moody, W F	1929-1956	Shapley, S S	1956-1961	Lysaght, F W
1917-1921	Ramson, M	1931-1935	Nielson, C	1956-1962	Dempster-Rivett, JCD
1917-1925	Boon, W R	1931-1941	Arres, J	1956-1963	Herbison, R
1917-1925	Brown, R	1931-1947	Canning, A J	1956-1971	Niederer, R A
1919-1921	Buddle, L	1933-1935	Cutler, F B	1959-1962	Oxenham, R K
1919-1921	Lees, R L	1933-1938	Brabant, H W	1959-1965	Turner, H W M (Mrs)
1919-1923	Harron, P A	1935-1938	Bridger, A E	1959-1971	McCallion, V J (Mrs)
1919-1925	Turnbull, J M	1935-1938	Donaldson, A	1961-1965	Bridges, F A
1920-1921	Irvine, F A E	1935-1941	Hall, A	1962-1965	Morgan, H W
1920-1921	Mairs, P J	1935-1941	Otley, G	1962-1971	Burgess, J P
1920-1923	Keegan, P	1935-1950	Armstrong, C S	1962-1974	Washer, G L
1921-1923	Canning, A J	1935-1951	Barry, B S	1962-1976	Morpeth, R T *
1921-1923	Chilton, H	1938-1941	Prideaux, F	1963-1968	Judd, A G
1921-1923	Mahy, F	1939-1941	Brabant, H W	1965-1968	Lees, V J L
1921-1923	Smallfield, W M	1940-1944	Good, C W G	1965-1968	Warren, H G
1921-1925	Brabant, G A	1940-1947	Mullholland, J G	1965-1971	Henderson, W S
1922-1925	Bonaker, H K	1941-1944	Cummings, T J	1965-1973	Cutler, F G
1923-1925	Appleby, F J	1941-1949	Creeke, J	1968-1971	Bridges, F A
1923-1925	Bridger, W E	1944-1947	Spring, L R	1968-1971	Handley, J C
1923-1925	Franklin, J	1944-1950	Morpeth, R T	1968-1974	McGlashen, D J
1923-1925	Hamill, M	1944-1956	Warren, H G	1971-1974	Brown, J N (Mrs)
1923-1925	Schofield, R W	1945-1947	Good, C W G	1971-1974	Timbs, V
1923-1931	Cutler, F B	1947-1950	Dillicar, E R	1971-1976	Byrne, R N *
1924-1927	Carter, N M	1947-1950	Warner, J H B	1971-1976	Haultain, J M (Miss)*
1924-1927	Foss, W L	1947-1953	Buttimore, R S	1971-1976	Hick, A B *
1925-1927	Armstrong, E	1947-1953	Needham, K A	1971-1976	Morgan, W B *
1925-1927	Emmett, C J	1947-1956	O'Rourke, A D	1971-1976	Nicholson, M R *
1925-1927	Smedley, W W	1949-1950	Lennie, C M	1974-1976	Mitchell, A F *
1925-1927	Timbs, C A	1950-1953	Cutler, H G	1974-1976	Rainford, J R *
1925-1929	Kent, G R	1950-1953	Winstone, J E (Mrs)	1974-1976	Shepherd, M F *
1925-1929	McCullough, J G C	1950-1956	Henderson, W S	1974-1976	Smith, T C *
1925-1933	Jarrett, W	1950-1956	Jarrett, K	1974-1976	Stewart, L
1925-1935	Howatt, W G	1950-1959	Cobbe, R		
1925-1944	Caisley, C G	1950-1962	Judd, A G		

### MAYORS

1917-1919	Brabant, G A
1919-1921	Moore, F A
1921-1923	Boon, W R
1923-1925	Chalmers, D C
1925	Turnbull, J M (May-Aug)
1925-1938	Sullivan, W
1938-1950	Barry, B S
1950-1956	Shapley, S S
1956-1965	Warren, H G
1965-1976	Morpeth, R T *

### DEPUTY MAYORS

1923-1931	Cutler, F B
1933-1938	Arres, J N O
1938-1947	Shapley, S S
1947-1950	Armstrong, C S
1950-1956	O'Rourke, A D
1956-1959	Brebner, C H
1959-1962	Judd, A G
1962-1968	Niederer, R A
1968-1971	Bridges, F A
1971-1973	Cutler, F G
1973-1974	McGlashen, D J.
1974-1976	Byrne, R N *
1917-1921	Wheeler, J
1921-1931	Garaway, H O

### TOWN CLERKS

1933-1944	Saunders, D V
1947-1968	Lovelock, L D
1968-1976	Wilson, D J

## WHAKATANE DISTRICT COUNCIL—1976—PRESENT

(B) = from Whakatane Borough  
 (C) = from Whakatane County  
 (H) = from Whakatane Harbour Board

)  
 ) Refer "Formation of Council"  
 )

### Councillors

1976	Conn, L G (C)	1977-1984	Murphy, G N (Mrs)	1995-2004	Byrne, E R (Mrs)
1976	Nikora, R (C)	1977-1989	Tait, W P	1995-1997	Weaver, G R N (Mrs)
1976-1977	Bloor, R J (C)	1980-1983	Whyte, G D	1995-2001	Swan, D I
1976-1977	Boon, D W (H)	1980-1986	Le Lievre, E D	1996-2004	Birkett, B W
1976-1977	Ewart, M (C)	1980-1986	Rainford, J R	1998-2001	Adam, A J
1976-1977	Gordon, J L S (C)	1980-1989	Hammond, C J	1998-2004	Butler, G T
1976-1977	Haultain, J M (Miss)(B)	1981-1986	Mossman, S A (Mrs)	1998-2001	Delahunty, N T
1976-1977	Hick, A B (B)	1983-1998	Guy, B A	1998-2007	Eivers, D J (Mrs)
1976-1977	Hindmarsh, P C (C)	1983-1986	Badhams, W	1998-2004	Gray, G B
1976-1977	McLean, A B (C)	1983-1989	Brill, L M (Mrs)	1998-2001	Kirby, A D
1976-1977	Morgan, W B (B)	1983-1989	Edge, M E A (Mrs)	1998-1998	Lyon, B A (Mrs)
1976-1977	Nicholson, M R (B)	1983-1992	Herdman, D R	1998-2001	White, J H
1976-1977	Rainford, J R (B)	1986-1992	Butt, R D	1998-2004	Wright, D G
1976-1977	Rogers, C J (H)	1986-1995	Bell, E J (Mrs)	2001-	Hanlen, G I
1976-1977	Stewart, L O (B)	1986-1998	Mahy, R H	2001-2004	Holmes, C G H
1976-1977	Wardlaw, R F (C)	1986-2001	Shaw, B D	2001-	Te Kurapa, J
1976-1980	Macdonald, K J (C)	1986-1998	Violich, K M	2001-2004	Wardlaw, D J
1976-1980	Morpeth, R K (H)	1987-1992	Murphy, T J	2004-	Orr, R N
1976-1980	Shepherd, M F (B)	1989-1995	Butler, J R	2004-2007	Iles, A V
1976-1983	Byrne, R N (B)	1989-	Chambers, C (Mrs)	2004-2007	Fitzpatrick, J
1976-1983	Morpeth, R T (B)	1989-1998	Green, T E	2004-2007	Hudson, L M
1976-1983	Smith, T C (B)	1989-1996	Kyle, J R	2004-2007	Dowd, D R
1976-1986	Gow, J W (C)	1989-1992	Mossman S A (Mrs)	2005	Johnston G V
1976-1986	Mitchell, A F (B)	1989-1992	Foster, P P-T	2007-	Bonne A A
1976-1989	Fox, J S (C)	1992-1995	Birkett, B W	2007-	Byrne E R (Mrs)
1977-1998	Martin, G J	1992-1995	Bonne, A A	2007-	Clark W B
1977-1980	Doherty, G M	1992-2004	Checkley, W N	2007 -	Jarrett S
1977-1981	Evans, A E H	1992-1998	Donaldson, A J (Mrs)	2007 -	Shearer I J
1977-1983	Yeoman, J C	1992-1998	Searle, I E		
		1995-2004	Mahoney, J G (Mrs)		

### MAYORS

1976-1980	Morpeth, R T, QSO
1980-1986	Gow, J W, QSO
1986-1989	Byrne, R N, MBE
1989-1992	Brill, L M (Mrs)
1992-1995	Herdman, D R
1995-1998	Bonne, A A
1998-2004	Hammond, C J
2004-	Holmes, C G H

### DEPUTY MAYORS

1976-1980	Gow, J W
1980-1983	Byrne, R N
1983-1986	Rainford, J R
1986-1989	Tait, W P
1989-1992	Herdman, D R
1992-1995	Guy, B A
1995-2001	Chambers, C (Mrs)
2001-2004	Birkett, B W
2004-	Hanlen, G I

### GENERAL MANAGERS

1976-1980	Wilson, D J
1980-2000	Miles, B F

### CHIEF EXECUTIVE OFFICERS

2000-2003	McDonald, I W
2003-2006	Christison, D R
2006-	Turner, D A (Ms)

## **MURUPARA TOWN COUNCIL AND BOROUGH COUNCIL**

---

### **COUNCILLORS**

1959-1960	McKee, E M (Mrs)	1968-1977	Roberts, H P	1981-1983	Blackett, R J
1959-1962	Gutry, H W S	1971-1974	Aislabie, B H	1983	Kerr, G P
1959-1962	Symington, A	1971-1974	Boynton, R J	1983-1985	Bradshaw, P M
1959-1962	Winiata, R	1971-1974	Cryderman, V E (Mrs)	1983-1985	Robinson, K
1960-1962	Murphy, P G	1971-1974	Di Maio, G	1983-1986	Manderson, A J
1962-1963	Nicholls, C M H	1971-1977	Clarke, T T	1983-1986	Foster, P P T
1962-1965	Clinker, E G	1973-1974	Bradley, P M	1983-1989	Mita, M M
1962-1966	Crequer, P C	1973-1974	Evans, R D	1983-1986	Page, R K
1962-1968	Fell, A C (Mrs)	1974-1976	Boynton, R J	1985-1986	Kerr, G P
1962-1968	McKelvey, R N	1974-1976	Wingate, J	1985-1986	Sattler, B J
1963-1964	Shergold, J A	1974-1977	Teddy, V T	1985-1987	Tracy, M F
1963-1965	Murphy, P G	1974-1977	Unsworth, P H	1986-1987	Hardy, C R
1964-1965	Wingate, J	1974-1980	London, G K	1986-1987	Howarth, D J
1965-1967	Anderson, J P	1977	Rangi, N F	1986-1989	Nelson, D
1965-1968	Fisher, K P	1977-1980	Hardy, C R	1986-1989	Ruri, L R
1965-1968	Di Maio, G	1977-1980	Martin, M E (Mrs)	1987-1988	Baker, J M (Mrs)
1965-1971	Vari, S P	1977-1980	Whiteman, A H	1988-1989	Clarke, T T
1967	Hargreaves, G L	1977-1983	Hutton, J D (Mrs)	1988-1989	Jones, M J T
1968-1970	Price, D C	1977-1983	Messent, B R	1988-1989	Olliver, C T
1968-1971	Kippenberger, K P	1977-1983	Wihare, R	1988-1989	Newton, K G
1968-1971	McLelland, T	1978-1980	Shergold, D G		
1968-1971	Porima, K	1980-1981	Hill, W E		
1968-1974	Heard, G	1980-1983	Aislabie, J R		

### **MAYORS—1959–1989**

1959-1965	Lynds, A H
1965-1971	Murphy, P G
1971-1976	Wiseman, A S, Dr
1976-1978	Wingate, J
1978-1980	Shergold, D G
1980-1983	Whiteman, A H
1983-1986	Hardy, C R
1986-1989	Foster, P P T

### **TOWN CLERKS—1959–1989**

1959-1960	McKelvey, R N
1961-1965	Drain, G T
1966-1970	Willmott, J D C
1970-1972	Dickinson, R S
1972-1975	Hickman, D J
1976-1977	Beckett, A R
1977-1978 *	Storey, H J (Mrs)
1978-1979	Paterson, D
1979 *	Storey, H J (Mrs)
1979-1989	Donaldson, J (Mrs)

\* Acting Town Clerk

## WHAKATANE HARBOUR BOARD

---

For several years from 1 October 1900, the Whakatane County Council enjoyed the full powers of a Harbour Board and then sponsored the creation of a separate Board by appropriate legislation. The newly fledged Whakatane Harbour Board held its inaugural meeting on 5 March, 1913, and ceased to exist when its functions were assumed by the Whakatane District Council in 1976.

### BOARD MEMBERS (\* Denotes also Whakatane District Councillor)

1913	Feist, A M	1923-1926	Luke, A L	1953-1962	Wilson, J
1913-1917	Martin, D C	1923-1926	W Sullivan	1953-1976	Mitchell, A F *
1913-1917	Phillips, W	1923-1929	Franks, J K	1954-1956	McGougan, A F
1913-1919	Mitchell, T	1923-1931	Stewart, A O	1956-1967	Eivers, C F
1913-1921	Sutherland, A C	1923-1941	McGougan, A F	1956-1971	Carling, A
1917	Walker, T	1925-1926	Boon, W R	1959-1968	Marx, K
1917-1919	Barry, J T	1926-1928	Smedley, W W	1959-1971	Patterson, N
1917-1919	McGregor, T S	1926-1929	Baird, P L	1961-1962	Jarrett, K
1917-1921	Allan, A	1926-1929	Lewis, L	1962-1968	Armstrong, C S
1917-1921	McFarland, W	1929-1930	McPeake, J W	1963-1965	Orr, J
1917-1953	Mitchell, J A	1929-1946	Brabant, G A	1963-1976	Boon, D W *
1918-1919	Douglas, G	1931-1932	Yeoman, F C	1965-1967	Wellington, R
1918-1920	Harron, P	1932-1935	Caisley, C G	1967-1976	Cleland, R R
1919-1920	Thompson, T	1932-1946	Tickner, C	1968-1971	McIntyre, B B
1919-1921	Eivers, E J	1932-1951	Ruddick, R	1968-1976	Butler, R E
1919-1921	Mitchell, T (Jnr)	1935-1956	Smith, C T	1968-1976	Morpeth, R K *
1920	Sheat, A	1941-1946	Kent, G R	1971-1974	Smith, T C
1920-1925	Keegan, P	1941-1959	Hunter, W	1971-1976	Burgess, J P
1921-1922	Brabant, G A	1941-1972	Richardson, A L	1971-1976	Clarke, T G
1921-1922	Buddle, L	1944-1953	McKenzie, C	1971-1976	Rogers, C J *
1921-1922	Sisam, W H	1946-1961	Warren, H G	1972-1976	Mitchell, A M
1923	Colebrook, G	1947-1953	Brabant, H W	1974-1976	Buchanan, R C
1923-1924	Law, E V	1951-1959	Cobbe, R		

### CHAIRMEN

1913	Phillips, W
1914-1916	Martin, D C
1916-1918	Allan, A
1918-1921	Sutherland, A C
1921-1923	Buddle, L
1923-1926	Sullivan, W
1926-1929	Boon, W R
1929-1941	Sumner, W
1942-1962	Boon, W R
1963-1972	Richardson, A L
1972-1976	Morpeth, R K

### DEPUTY CHAIRMEN

1952-1961	Warren, H G
1916-1929	Richardson, A
1963-1969	Patterson, N
1969-1972	Morpeth, R K
1972-1976	Mitchell, A F

### SECRETARIES

1953-1916	Garaway, H O
1916-1929	Robinson, H R
1929-1956	Lucas, C G
1956-1965	Briggs, E L
1964-1976	Gray, J E

## **STAFF AND COUNCILLORS, WHAKATANE DISTRICT COUNCIL**

---

### **CHIEF EXECUTIVE OFFICERS**

**BARRIE MILES  
GENERAL MANAGER  
1980 TO OCTOBER 2000**

No photo



**IAN MCDONALD,  
CHIEF EXECUTIVE,  
FROM 2000 TO 2003**

**DAVID CHRISTISON,  
CHIEF EXECUTIVE OFFICER,  
FROM 2003 to 2006**





**DIANE TURNER  
CHIEF EXECUTIVE OFFICER,  
FROM AUGUST 2006 - CURRENT**

**MAYOR AND COUNCILLORS**



2001-2004

*(Back row): D J Wardlaw, G I Hanlen, C G H Holmes, E R Byrne, D J Eivers, D G Wright, G R Butler, J Te Kurapa  
(Front row): G B Gray, C Chambers, C J Hammond (Mayor), B R Birkett (Deputy Mayor), J G Mahoney, W N Checkley*



*Whakatane District Council 2004-2007*

*(Back row): J Fitzpatrick, J Te Kurapa, L M Hudson, A V Iles, R N Orr, D R Dowd, D A Turner (Chief Executive)  
(Front row): G V Johnston, D J Eivers., C G H Holmes (Mayor), G I Hanlen (Deputy Mayor), C Chambers*

## **FLAG DAYS**

---

The following are the set occasions on which the New Zealand Ensign is to be flown from Government buildings from 8.00 am to sunset:

6 February

- *Her Majesty's Accession and Waitangi Day*

2nd Monday in March

- *Commonwealth Day*

21 April

- *Birthday of Her Majesty the Queen (actual)*

25 April

- *Anzac Day \**

2 June

- *Coronation Day*

1st Monday in June

- *Official Birthday of Her Majesty the Queen*

10 June

- *Birthday of His Royal Highness the Duke of Edinburgh*

24 October

- *United Nations Day*

4th Monday in October

- *Labour Day*

14 November



- *Birthday of His Royal Highness the Prince of Wales*

In Wellington only, and only when Parliament is opened by Her Majesty the Queen or by the Governor-General [not on days when opened by Commissioners]:

- *Opening of Parliament*

In Wellington only:

- *Arrival of Governor-General Designate*
- *Swearing in of the Governor-General Designate*
- *State Farewell for the outgoing Governor-General*

Only in the city of departure from New Zealand

- *Departure of the Governor-General*

Only in city or area being visited

- *Visit by the Sovereign Members of Royal Family and other distinguished people such as a Head of State or a Head of Government*

*\* ANZAC Day (25 April) is New Zealand's national day for commemorating those who have served this country in times of war. The New Zealand Flag should be flown at the top of the flagpole. It is appropriate, however, at places where commemorative services are being held, for the flag to be lowered to half-mast, for the duration of a memorial service, as a sign of respect.*

## **OCCASIONS ON WHICH FLAGS ARE FLOWN AT HALF-MAST ON GOVERNMENT BUILDINGS**

---

On day of death and up to and including the day of funeral:

- *The Sovereign (except on Proclamation Day)*

On day of death and day of funeral:

- *Governor-General of New Zealand*
- *Former Governor-General of New Zealand*
- *The Prime Minister of New Zealand*
- *Former Prime Minister of New Zealand*

On date of funeral only:

- *Commonwealth Governors-General*
- *Commonwealth Prime Ministers in Office*
- *Foreign and Commonwealth Heads of State*
- *Members of the Royal Family*

## **ROYAL VISITS**

---

The following Royal Visits have been made to Whakatane by members of the Royal Family:

21 December 1934

- *HRH Duke of Gloucester unveiled the Roll of Honour at the War Memorial Rest Room at Pohaturoa*

3 November 1980

- *Their Royal Highnesses, the Duke and Duchess of Kent*