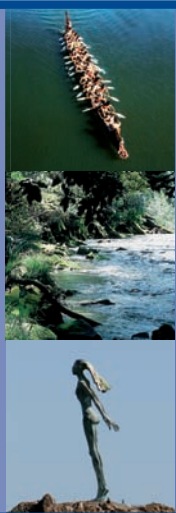




www.whakatane.govt.nz



Whakatane District Council

# BYWAYS

AUGUST 2008



## A fresh look at the Ten-year Plan

Every day all of us are affected in some way by activities and decisions the District Council makes. Many of our everyday activities are dependent on services that the Council provides. These include water flowing freely from your taps, applying for a building permit, finding a car park so you can borrow books from the library, taking your nieces and nephews to the park, putting out the rubbish for collection, walking your dog at night along well-lit streets.

"It is for these reasons that the Council is required to prepare a Long Term Council Community Plan (LTCCP) every three years and work with its community in setting and agreeing on the critical things that Council should be doing", said Whakatane District Council Chief Executive Diane Turner. Ms Turner said over the next few months Council staff will be preparing a draft LTCCP and will be working with Community Boards and various groups to define key projects and levels of service. "The intention is to prepare a draft plan which is reflective of the community's needs, wants and expectations.

"Once the draft is ready, it will be open for public consultation, giving the community an opportunity to have their say on the draft plan. We want the community to engage with the Council in preparing this plan as it shapes the future of the District for the next 10 years" said Ms Turner.

The LTCCP sets the goals that the Council and the community agree are important. It is the duty and responsibility of local government to make decisions about local issues and services, having regard to local needs and priorities. This recognises that not all communities are the same, nor do they have the same issues.

The purpose of the Long Term Council Community Plan is to:

- describe the activities of the Council
- describe the community outcomes desired for the District
- provide integrated decision making (between the Council and the community) and co-ordination of resources
- provide a long term focus for the Council's decision and activities
- provide a basis for accountability to the

Whakatane District community

- provide an opportunity for community participation.

Other contributions the Council makes to your wellbeing include:

- Writing and managing plans for your area's development, including management of the natural and urban environment.
- Making bylaws and enforcing them.
- Participating in community partnerships and initiatives such as reducing crime, increasing jobs or access to housing.
- Civil defence planning and emergency preparedness.

Ms Turner said it is important for people to be aware that decisions and actions being considered by the Council can be undertaken only if they have been identified and included in this Plan. The only way the Council can adopt or amend an LTCCP is through the special consultative procedure outlined in the Local Government Act 2002. Once the final Plan is adopted by Council in June 2009 it will be in place until 30 June 2012. In the interim years the Council will



Diane Turner - Chief Executive

prepare Annual Plans.

"For these reasons, it is of vital importance that people take time to consider the proposals in the draft LTCCP when it becomes available for public consultation in early 2009. The LTCCP development process is your opportunity to influence the way your Council operates and the decisions it makes over the next three years", said Ms Turner.

## Setting standards of service

As part of the development of the Council's Long Term Council Community Plan 2009-19 (LTCCP), the Council is reviewing its Levels of Service. Levels of Service and performance measures represent the Council's service commitment in return for the rates and charges you pay. The LTCCP is where the Council specifies the levels of service the community can expect, and describes how the community will know these have been achieved (performance measures and targets).

Levels of Service are the results that the Council expects will be generated by an activity, and are supported by clear performance measures that are stated from a customer perspective. For example a Solid Waste level of service might be: "To provide high quality facilities and efficient, reliable solid waste services". This level of service is supported by performance measures which clearly state what this will mean for the customer and how we will know if the Council has succeeded in delivering the stated level of service. These 'Customer Performance Measures' are supported by 'Technical Performance Measures' which state from a Council perspective how it will go about making sure it succeeds in meeting its 'Customer Performance Measures'.

The Level of Service that is provided by an activity can influence how much you pay in rates. In general terms, improving a level of service often means putting more money into that activity (to hire more staff or invest in better equipment for example). Lowering a level of service can sometimes result in a lower cost for that activity however that must be balanced with ensuring certain base standards are met. For example the Council is required by legislation to provide certain services such as rubbish collection and sewerage. Within those services the Council does have choices about the services it provides, but it can not drop below certain base standards.

The Council has drafted Levels of Service for its activities and will be talking to Community Boards and the Iwi Liaison Committee about them this month and in early September. The results of this consultation will feed into the draft LTCCP, which will come out for public consultation in early 2009. If you have any comments or questions that you would like your Community Board to take up for you then please do contact a member of your Community Board during August. Contact details are listed on the Council website [www.whakatane.govt.nz](http://www.whakatane.govt.nz)

## Council reviewing rating policy

The Whakatane District Council is reviewing its rating structure to ensure that it meets the needs of the District. Like all councils in New Zealand, the Whakatane District Council charges rates. Rates are a "tax" on properties which provide the Council with funds to provide a broad range of services, programs, facilities and infrastructure - from parks and playgrounds to roads and rubbish collection.

The Local Government (Rating) Act 2002 (the LGRA) provides councils with flexible powers to set, assess and collect rates from landowners. As the rating of land is a tax, it is important that policies and processes associated with all aspects of rating are transparent and accountable, and that council processes and information enable ratepayers to identify and understand their liability for rates.

A review of the Council's rating structure is underway and will be consulted on alongside the Draft Long Term Council Community Plan 2009-19 (LTCCP). The objective of the review is to achieve consistency in the basis for rating across the District, and will examine fundamental principles which form the basis of the Council's rating policy.

The review takes into account the recommendations of Funding Local Government: The Report of the 2007 Independent Inquiry into Local

Government Rating ('the Shand report') along with the Council's own priorities, principles and circumstances. Early indications are the review will increase the transparency of the rating system and reduce the administrative cost of managing the Council's rating function. A major topic being considered by the review is the differential rate used in the District. Whether you are a residential or commercial ratepayer, part of your rates bill includes general rates. The general rates are those funds that are collected and are applied to activities that provide benefit to the whole community. These generally cover services where it is too hard to tax direct users. The rating differential is the loading that calculates rates for certain types of premises to recognise the different needs and impacts that they have.

The Council will be talking to Community Boards about preliminary results from the rating review in late August and early September. The results of this consultation and the work done by the Council will feed into the draft LTCCP, which will come out for public consultation in early 2009. If you have any comments or questions that you would like your Community Board to take up for you then please contact a member of your Community Board during August.

Contact details are listed on the Council website [www.whakatane.govt.nz](http://www.whakatane.govt.nz)





Council staff have a hangi during lunch break, as part of activities to celebrate the Māori Language Week.

## Māori Language Week '08

The Council joined the rest of the country in celebrating Māori Language Week 21 – 27 July 2008. Activities kicked off with a hangi for staff and te reo Māori daily quizzes to promote the use of te reo. The hangi prepared by the Wairaka Māori Womens Welfare League at Wairaka Marae at the start of Māori language week was a great success with over 300 hangi sold. Proceeds from the sale will go towards funding the League members attending their Annual Conference in October. Whakatane District Councillor George Johnston and many members from the

Wairaka community supported the event. Council staff participated in the Māori Quiz competitions and took part in Training in the "Kiwi Survival Kete – talking te reo programme". Bookmarks specifically designed for Māori Language Week and Matariki, have been made available for the Whakatane community. Pakiwaitara or Storytelling was presented by Molly Turnbull in support of the Whakatane Museum Tuhoë Exhibition and the Whakatane District Libraries Holiday programme. The presentation of Volume 2, "Pakipaki mai" will be held in early August.

# Arts and Culture project on track

The planning for the new Arts and Culture Centre for the Whakatane District is continuing with Council approving an economic viability and sustainability study. "This study will provide a framework for the Council to make further decisions on whether to continue with the project and if so what nature the Centre would take" said Arts and Culture Manager Dr Ray Thorburn. At its June meeting the Council accepted a report prepared by arts and culture expert John Leuthart and Dr Thorburn. The report based on stakeholder feedback and an analysis of previous reports provides a conceptual framework for any proposed development. "This is an exciting and challenging project for the

Arts and Culture business unit to work towards developing a multi-functional, multi-purpose facility for the community to celebrate its heritage. "The report identifies the Centre as a window for the region to showcase and provide a link between our extraordinarily beautiful environment, our people and our visitors", said Dr Thorburn. He said the report envisages opportunities to expand visitor numbers and generate wider interest in the District as a "must visit place" through collaborative marketing with the business community and cultural tourism operators. A copy of the report can be downloaded from the museum website: [www.whakatanemuseum.org.nz](http://www.whakatanemuseum.org.nz)

# Flexible net barrier gets the nod

Residents in the western end of Matata will get a Flexible Net System to protect the area from any future damaging debris flows. The Council approved the construction of a Flexible Net Barrier across the Awatarariki stream at a cost of \$2.4million.

Since the destructive debris flows at Matata in May 2005, the Council has been working to identify options of mitigating the risk of future debris flows impacting the Matata township.

Whakatane District Council Chief Executive Diane Turner says one of the primary aims of the Matata regeneration projects is to construct a debris control barrier within the Awatarariki Stream to minimise the risk from future debris flow.

Council's decision to approve the Flexible Net Barrier System means preparation of the necessary documentation required to support an application for resource consent can commence.

Matata's Clem Elliott Drive residents were most affected. While their houses and contents are presently insured, should they sell their homes, the next owner would not be covered until the mitigation work is completed.

For Clem Elliott Drive residents Keith and Kay Fergusson that is cause for concern and they are keen to see the flexible net option (which was their preference) proceed as quickly as possible through the design phases and to resource consent application stage. Keith explains, "Given the Council's decision at least the design work can proceed to resource consent application stage, so that by summer hopefully construction can begin."

However, there are no guarantees that construction would commence by summer – as so far all the other resource consent applications for mitigation projects have been delayed by appeals. Neighbour and fellow Clem Elliott Drive

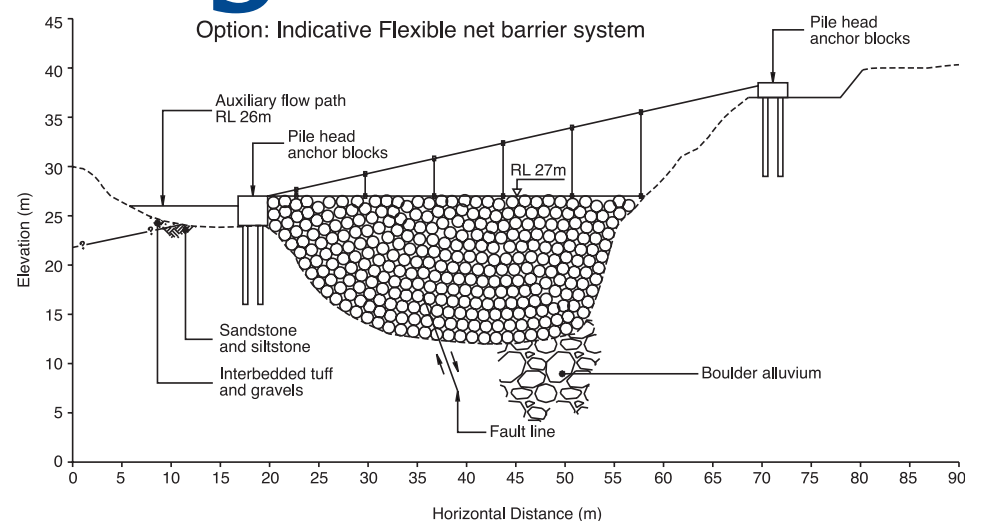
resident Bill Whalley is more concerned about the need for Moore's Bridge to be upgraded to handle larger volumes of debris and water. "The former subway and also the railway bridge have both been upgraded to handle larger flows and I believe Moore's Bridge needs to be widened and strengthened also as part of this next phase," said Bill adding, "It was one of the bottlenecks during the 2005 event, and if upgraded it would assist the water to flow away quicker." In October 2007 Tonkin & Taylor identified and reported to both Council and the community on a range of potential debris detention structures types:

- Embankment Dams
- Open Dams
- Pier Barriers
- Flexible net barriers

These options, along with budget estimates were presented to the Council and community for discussion in November 2007. Tonkin & Taylor concluded the most cost-effective means to provide protection to Matata from debris flows in the Awatarariki catchment was to either construct an embankment dam or a flexible net barrier system.

Since then updated information has been provided by Geobrugg (the flexible net supplier) who have undertaken further concept design and have advised the cost of the full containment at the previously identified site has escalated.

An alternative and less expensive option is to locate either the embankment dam or the flexible net barrier at a downstream location, this alternative downstream site would provide partial containment of the design event for a lesser cost. This option requires the construction of a spillway to divert excess debris away from the residential area.



Flexible barrier net installed over a road offers protection from rockfalls. A similar net will be installed across Awatarariki stream. (Inset: close up of the interlocking net.)  
Courtesy Geobrugg magazine





Sections of Ohope beach and sand dunes were eroded during the recent July storms.

## Commissioners to decide on Variation 6 – Coastal Hazards

Independent Commissioners will be hearing and making a decision on Variation 6 – Coastal Hazards to the District Plan. The Council in July agreed to appoint and delegate its powers and duties under the RMA to three independent Commissioners to hear submissions and make decisions on them. Submissions and further submissions have now been received and a public hearing on the Variation will be scheduled later this year. Letters will be sent out to all submitters closer to the hearing date.

### Which properties are affected?

The analysis of coastal hazards in the Whakatane District was undertaken in 2002 by a coastal engineer from Tonkin and Taylor Limited. The analysis identified areas of land where coastal erosion and

inundation (flooding) is currently occurring and where erosion and inundation is predicted to occur by 2060 and 2100, taking into account the effects of sea level rise. All land joining the coast and Ohiwa Harbour is potentially affected. The main areas affected include:

1. Ohope, particularly West End Road and Pohutukawa Avenue
2. Coastlands/Piripai
3. Around Ohiwa Harbour
4. Parts of Clem Elliot Drive, Matata.

The areas affected have been mapped and the location of each hazard in relation to individual properties has been determined. If you would like more information about this issue, please contact Tony Bullard on 306 0500, send an e-mail to [tony.bullard@whakatane.govt.nz](mailto:tony.bullard@whakatane.govt.nz) or visit our web site ([www.whakatane.govt.nz](http://www.whakatane.govt.nz)).



Done and Dusted! Whakatane District Council Chief Executive Diane Turner turns the last sod to mark the successful completion of the Otarawairere/West End reticulation project.

## Otarawairere Project

Done and Dusted! The Otarawairere/West End wastewater and stormwater reticulation project is complete. The project is among several of the District's disaster mitigation projects at various stages of development. The Council's Chief Executive Diane Turner said completing the project on time and within budget was a great outcome for the Council and the community. "The lessons learnt and experience gained by staff in implementing such a complex and challenging project are a major benefit for the District as it works to implement other disaster mitigation projects in Matata and Edgecumbe". She said the project was an excellent

example of great partnership. "There was excellent support from our partners in this project Ngati Awa, Tonkin and Taylor for the investigation, design, contract supervision and consenting process and HEB contractors who undertook the physical works". Ms Turner thanked the Otarawairere/West End community for co-operating with the contractors and putting up with the inconvenience (noise, dust) during the construction period. The project was in response to the severe landslips that occurred in July 2004, which prompted the Council to investigate measures to reduce and minimise the risk of landslips from occurring in the future.

## Tūtohunga signed

The Whakatane District Council and the Iwi Liaison Committed extended their agreement of cooperation with the signing of the Tūtohunga (Memorandum of Understanding) early this year. The Tūtohunga is an agreement between Council and the Iwi Liaison Committee to work together in integrating and involving Māori in the Council's decision making processes.

"This agreement demonstrates our genuine intentions to work towards sincere communication and consultation that will allow us to build a better relationship and respect for each others cultural principles and values" said Whakatane District Mayor Colin Holmes at the signing ceremony. The current members on the Iwi Liaison Committee are:

Pouroto Ngaropo (Chair)	Ngati Awa
Henry Pryor (Deputy Chair)	Ngati Rangithi
Colin Te Pou	Tuhoe East
Kiri McCorkindale	Tuhoe West
James Carlson	Ngati Whare
Paora Hunia	Tohu Marae Trust (Tuwharetoa)
Joe Mason	Ngati Awa
Richard White	Tuhoe ki Manawaru
Bill Bird	Ngati Manawa
Tawhai Te Rupe	Upokorehe
Mayor Colin Holmes	(ex-officio member)
Cr G Johnston and Cr R Bryne	(Council representatives)

For more information please contact the Council's Kaitakawenga Māori (Māori Liaison Officer), Hinewai Katene on 07 306 0500.



## Gum tree carving

Put your thinking caps on and get the creative juices working... is the call from Whakatane Community Board. The Board would like to hear your ideas about creating a carving of the Eivers Road gum tree which reflect a local theme. Board Chairman Neville Delahunty said the huge gum tree held many memories for a lot of people in the area and the Board is

looking at creating a fitting locally themed feature of the stump. Mr Delahunty said the Community Board will consider all ideas prior to selecting a theme for the design. If you have a suggestions, please email them to [information@whakatane.govt.nz](mailto:information@whakatane.govt.nz) or phone Customer Services Centre on 07 306 0500.



# Community Outcomes



Pupils from St Joseph's school in Matata take part in tree planting mark Arbor Day.

## Groups and schools take a lead in environmental care

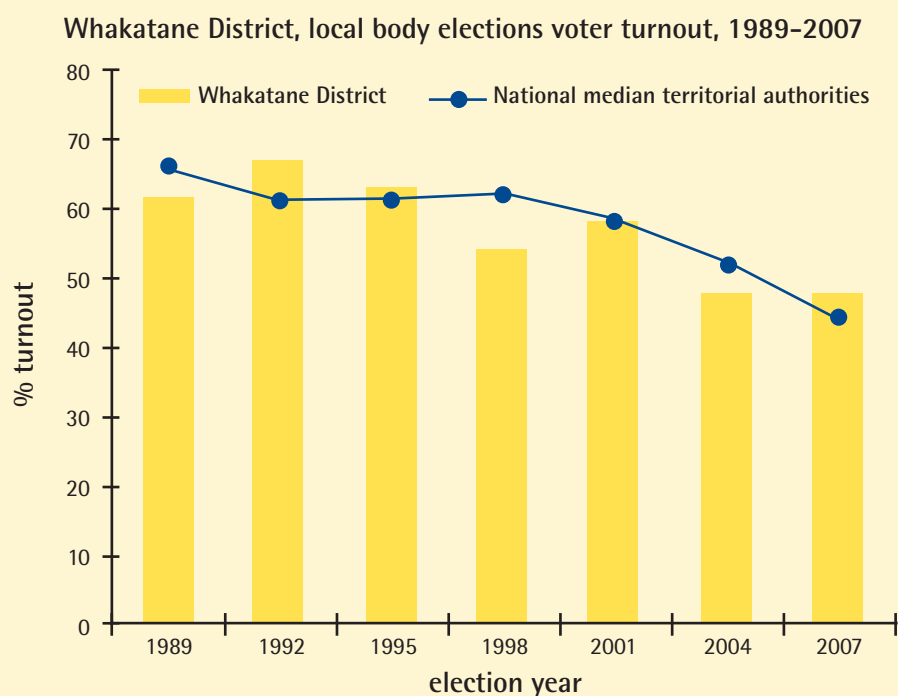
Care groups and schools are helping to protect areas that are environmentally important to the local community. Currently there are 12 groups and 15 schools actively involved in environmental work in the district. This may include bush reserves and areas of public land alongside streams, lakes, estuaries and the coast, with potential for environmental enhancement. These places are often recreational and heritage assets to the community, but may suffer from invasion by pest plants and animals, or require erosion protection.

Control of these threats, along with activities like restoration planting, help to protect and preserve these areas for future generations. For communities who aspire to protect and enhance their local environment, care groups are a means of empowerment. Enviroschools is a national programme, sponsored locally by Environment Bay of Plenty with support from Eastbay REAP. The programme aims to build awareness of environmental issues and equip children with the competencies they need to become future leaders in sustainability.

## Voter turnout

Our communities are built on the principle of democracy. Voting in a democracy is a fundamental role and responsibility of citizens. It is the main way in which people can express their political will, and strong voter turnout is a key to effective governance. Local authority elections provide residents of the district with an opportunity to influence key decision-making about their local communities. The graph below shows the proportion of eligible electors in the Whakatane District who cast ballots in each

election from 1989 to 2007. As shown by graph below, the voter turnout has gradually declined from 62% in 1989 to 48% in 2007. This reflects the nationally declining trend in voter turnout. In the most recent elections (2007) voter turnout was 48% for the Whakatane District compared to a national median for territorial authorities of 44%. Local authority elections throughout New Zealand are held every three years. The most recent elections were held in October 2007.



## Events

Information on local events can be found at [www.whakatane.com](http://www.whakatane.com)

Events make an important contribution to the diversity, vibrancy and identity of the Whakatane District. They also provide opportunities for entertainment and boost the local economy. In the Eastern Bay of Plenty, during 2007, there were 106 listings on the events register. This included 45 sports listings, 27 arts listings, 20 lifestyle/hobby listings, 10 cultural listings, 3 education listings and 1 conference. Events are only listed once on the events register yet a number of events, such as the Ohope Craft Market, occurred on a regular basis. As such the number of events is higher than the 106 listings on the events register. The total combined attendance to all of these events was estimated at approximately 129,000 people. Examples of major events that took place in the Whakatane District include:

This has been an Anniversary Weekend highlight for over 20 years and includes the Molly Morpeth Canaday Art Award and exhibition, Jazz concert and Shakespeare in the Park.

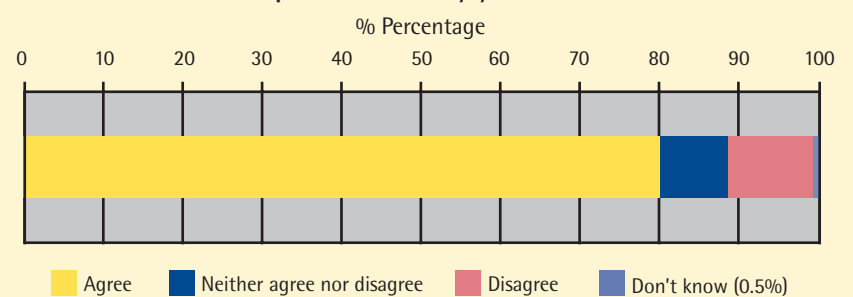
- Whakatane Tuna Tournament; The Whakatane Sport Fishing Club runs one of the biggest fishing tournaments in NZ, with a prize pool of over \$120,000. The waters of the Eastern Bay are well known sport fishing grounds and the heaviest catches are well over 50kg.
- Whakatane Great Outdoors Monty's Revenge; This multisport event is a day of adventure on one of the most scenic courses in New Zealand taking in seascapes, cliffs, and bush and river vistas. Monty's Revenge is an achievable 57km course that includes run, bike and kayak sections and is open to individuals or teams.

## Sense of pride in the district

Ideally, residents of the district will have a sense of pride in the area in which they live. The sense of pride indicator acts as a barometer of how residents feel about the areas they live in. The 2006 Bay of Plenty Community Outcomes Survey asked a sample of Eastern Bay of Plenty residents to rate the extent they agreed or disagreed with the statement "I feel a sense

of pride in the way my area looks and feels," on a five point scale from 'strongly agree' to 'strongly disagree'. 80% of those that responded indicated that they agreed or strongly agreed that they feel a sense of pride in the way their local area looks and feels. This compares to an average of 74% for the remaining areas of the Bay of Plenty Region and a national average of 61%.

Eastern BOP; sense of pride in the way your area looks and feels, 2006



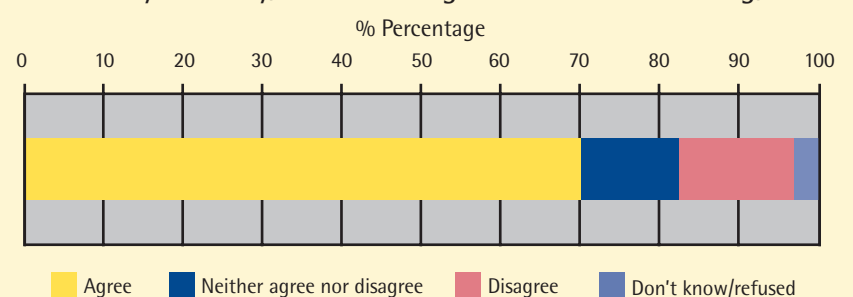
Source: Bay of Plenty Community Outcomes Survey 2006 New Zealand Quality of Life Survey's 2006

## The decision making process

Understanding the decision making process of local councils is important so that the community can be involved in the process, providing input into decisions that are important to them. This understanding can also help us work to remove barriers that limit

people's ability to exercise their right to participate in decision making. This compares favourably to an average of 53% for the remaining areas of the Bay of Plenty Region. In the Eastern Bay of Plenty 15% of respondents disagreed, while 12% neither agreed nor disagreed.

Eastern Bay of Plenty, understanding of local decision making, 2006



Source: Bay of Plenty Community Outcomes Survey 2006





Krumpin!... grand finale in the ordeal to become the Bay of Plenty King of Krumpin! Performers had chances to shine at the WDC Youth Council organised event in June.

## Youth involvement in decision making

Young people, aged 15 to 24 years, make up 12% of the population in the Whakatane District. However, there is a noticeable migration of youth away from the district in the 20-24 year age group.

WDC adopted a youth policy in March 2007 covering youth between the ages of 12-24 years old. The policy sets out how the Council will work with youth. An action plan is included in the policy covering the period 2006-2009. As part of the action plan the Council has formed a new Youth Council replacing the previous Whakaaro Rangatahi - Whakatane Youth Council.

The Whakatane Youth Council has a 16 people strong membership and meets on a regular basis. This includes six formal meetings and numerous

other meetings each year. Since the formulation of the new Youth Council, they have been involved in a number of activities including:

- debating youth issues
- participating in local media
- being involved in Council decision making process
- planning youth events

By listening and responding to young people and effectively involving them in decision making processes, the Council is seeking to ensure that young people develop the skills and attitudes they need to take part in society now, and in the future. It also allows us to ensure that the provision of recreational, social and cultural spaces and activities that recognise the diversity of youth.

## Sustainable energy use

We are still burning fossil fuels at the same rate as the rest of the country (national average 65%) and fossil fuels make up 66% of all energy used in the Whakatane District.

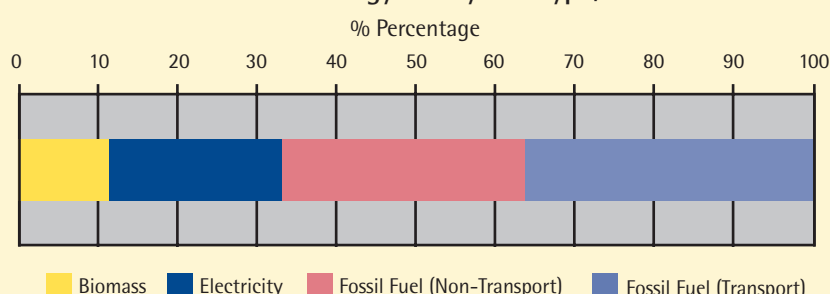
The table below shows the District total annual energy consumption including all sectors during 2002. Estimates produced by EECA (Energy Efficiency and Conservation Authority) show total consumption was approximately 3.9 million gigajoules (GJ). One GJ is about the same amount of energy as in a tank of petrol in a car.

We use energy for warming and cooling our homes, for lighting and cooking, for powering industry, for manufacturing and for transportation, among other

things. Some of the sources of the energy available to us are renewable such as hydro, geothermal, solar, wind and wave power - others, like fossil fuels, are non-renewable.

The use of certain types of energy, particularly fossil fuels, can result in the release of by-products such as carbon dioxide or particulate matter. These by-products then contribute to problems such as increased green house gas emissions and reduced air quality. The use of clean, renewable energy in households and other sectors such as transport, industry or agriculture will help to reduce these negative by-products.

Estimated energy use by fuel type, 2002



Based on 2002 estimates produced by EECA. At the time of publication estimates based on 2007 figures were not available.

## Solid waste management

The level of recycling undertaken by the Whakatane community has been monitored since the opening of the Recycling Park. The graph below shows the proportion of waste that is recycled, that which is green waste and that which goes to the landfill (residual). Over the monitoring period (February 2007 - January 2008) the total waste stream amounted to 23,267 tonnes, working out to an average 56 kilograms of waste per person per month in the District. In New Zealand, the majority of our rubbish is buried in landfill sites. This can have, and has had negative effects, including that:

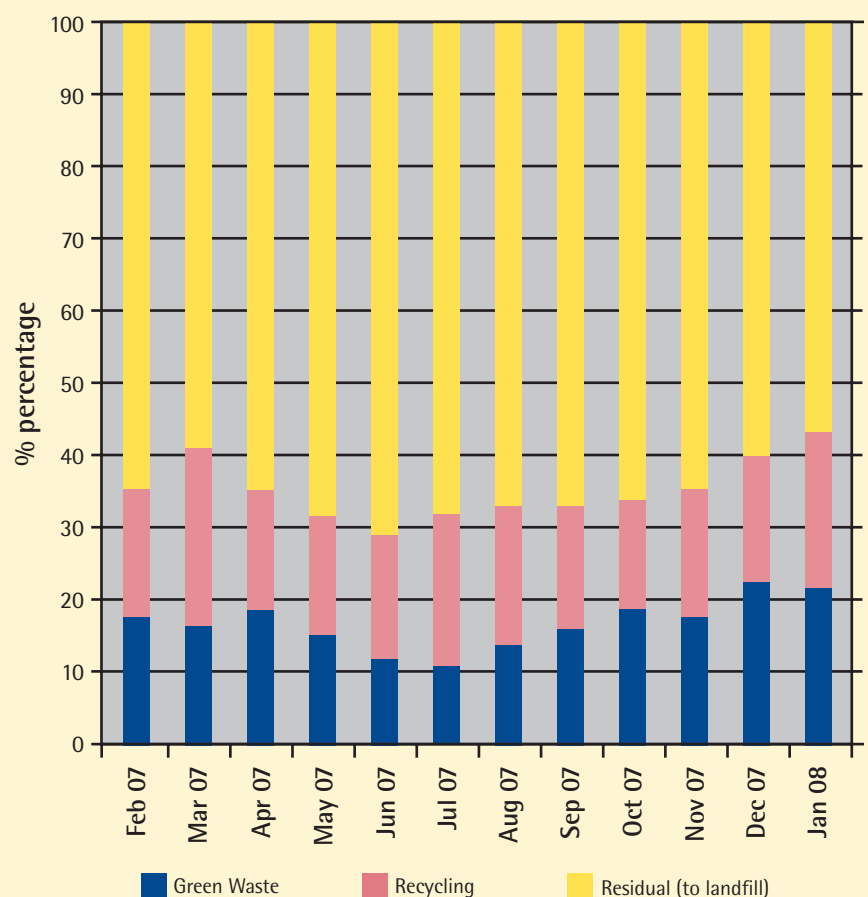
- landfills don't allow rubbish to break down very well, taking hundreds of years,
- landfills produce methane, a green

house gas that is 20 times worse than carbon dioxide,

- landfills produce leachates, a toxic liquid substance that contaminates surface and ground water.

While we need landfills to manage some of our rubbish, over half of the rubbish we put in our rubbish bags can be recycled or composted. The more recycling and composting we all do, the less we will need landfills to provide a 'final' solution to rubbish. The Whakatane District Council is responsible for the management of our solid waste, including collection, disposal and recycling. Following the commissioning of the Whakatane recycling park in 2005/06 there is one landfill site in the District with a transfer station in Murupara.

Proportion of waste reused and recycled, February 2007-January 2008



### Did you know:

If your household puts out one bag of rubbish per week you probably:

- throw away enough kitchen scraps and garden waste in a year to make over seven bags of compost
- throw away enough paper and cardboard in a year to make a stack of magazines eight metres high
- throw away enough recyclable plastic in a year to fill at least five wheelbarrows.

Source: Whakatane District Council; Ministry for the Environment



# Join the library...it's free

It's now free... yes you can now join the library for free. Bring along two forms of identification –photo and proof of address and you will be a member within five minutes.

The Council removed the \$5 annual library service fee making it easier for the library to achieve its goal of having 70% of the District population as library members. The fee removal which took effect in July coincided with the launch of the Top Title Collection; this new collection brings together all the latest and most popular titles into one place for easier access by readers.

The library has a number of new services available including the emailing of overdue notices and efpas. Your library card also gives you access to a number of subscriber only services from your home computer. These include Britannica online, Books & authors online, Oxford English dictionary and a variety of hosted databases. From the library there is access to Fundview (funding options for voluntary organisations) and Breakout (funding options for individuals) also Ancestry.com and legal advice website Brookers these are also available at the Murupara Library & Service Centre.



## Civil Defence

Whakatane District Council Emergency Management Services working with Living Water Enterprises have come with a novel idea to promote disaster preparedness. The idea is simply a humble 15 litre water cask. The Council's Civil Defence Emergency Management Officer Jan Pryor said Alan Findlay from Living Water came up with the concept of using their 15 litre water cask, filled with artesian spring water, as an affordable essential component of the emergency survival kit. The water cask, a cardboard box much like a wine cask, is printed and branded with the "Get Ready Get Through" civil defence message and is currently available for \$6. "This is a very competitive price for such an amount of spring water. It took 2 years to work through the right channels, gain approval from the Ministry of Civil Defence to use the "Get Ready Get

Through" logo and to print before the first box rolled off the packing line", said Mrs Pryor. On one side of the box, people can fill in their household emergency plan so the whole family knows what they need to do in an emergency while on the other side there is information on what else you need to put in your survival kit and what to do in an emergency. The foil bladder packaging makes this box unique in that the water will not deteriorate and will stay fresh well in excess of its two year expiry date. The boxes are available throughout the Bay of Plenty: Kawerau-Kawerau District Council; Opotiki-Opotiki District Council; Rotorua-Rotorua District Council; Tauranga- EnvBOP (Mt Maunganui office) and Whakatane-Whakatane District Council. For more information please contact Jan Pryor on 07 306 0500.



## Infiltration prevention

Whakatane District Council is appealing to residents to regularly check that stormwater is not leaking (infiltrating) into the sewerage (wastewater) system from gully traps or through manholes.

The Council's Utilities Manager Santha Agas said the Council has been experiencing problems stormwater infiltration into the wastewater system especially in Edgcombe urban area.

"We have two separate systems, one designed to handle stormwater and the other sewerage. Our sewer system is not designed to carry stormwater and once stormwater starts flowing into the sewerage system during rainy periods, we experience overflow problems".

Mr Agas said there are a number of ways that stormwater can get into the sewerage system and cause overflows in some places. Stormwater inflow/infiltration can occur due to leaks and breaks in the pipes or manholes due to various reasons. The common ways that stormwater can get into the sewer systems in the private properties are:

- Through the gully trap surrounds which have eroded or developed cracks
- Surface stormwater that enters the sewage system over the top of the gully traps due to the build up of ground level around the gully trap over the time
- Roof down pipes or surface drains that are illegally diverted into gully traps or connected to the waste water system

He said the Council will be inspecting the sewerage pipe network and repair the defects found in the Council's pipe network to minimise the inflow and infiltration of stormwater.

Mr Agas said private property owners can assist the Council in maintaining the integrity of the wastewater system by

taking a few steps to prevent stormwater getting into sewerage system. The following steps can be taken to avoid stormwater getting into the waste water system:

- If your gully trap is cracked or damaged, repair it with cement mortar
- If your gully trap is in a paved area and is less than 25mm in above the paving, raise the gully trap height to more than 25mm with the use of cement mortar or concrete.
- If the water is forming pools where the gully trap is located, raise the gully trap at least 25mm above the pool.
- If your gully trap is in an unpaved area and is less than 100mm above the ground, raise the gully trap height to more than 100mm with the use of cement mortar or concrete. If the water is forming a pond where the gully trap is located, raise the gully trap at least 25mm above the pool.
- If your roof down pipe is discharging stormwater into the gully trap or the downpipe is connected to waste water lateral, divert downpipe away from the gully trap or disconnect the down pipe from the waste water lateral and redirect the discharge into either a soak hole or the stormwater system.
- NB: All work on the sewer system must be carried out by a registered drainlayer.

The above works are minor and will not cost much. By doing these simple works you can contribute to help reduce the waste water system maintenance cost.

This will avoid the Council spending funds from your rates to address issues related of an overloaded sewage system. It also helps to avoid health hazards and to protect our environment from the possibility of raw sewerage overflowing from manholes, pump stations and gully traps.



# IT service improving

Efforts to improve connection speeds and provide quality Information Technology services in a secure environment between the Civic Centre and several off-site centres and libraries (Edgecumbe, Murupara and Ohope) are beginning to pay off.

The Council's Information Services Manager Donald Hudson says the IT department has worked with Eagle Technology to improve the network capacity and resilience as part of an ongoing programme to improve service delivery and IT infrastructure. "A few months ago, we experienced a failure in a component of our wireless network that links the main Council office (Civic Centre) with several of our off-site centres. Though service was restored the same day, the fault emphasised other weaknesses with our IT network equipment. To remedy this,

new equipment has been installed, tested and is now fully operational". Mr Hudson said in the past the Murupara office and the Ohope and Edgecumbe libraries were connected to the Council via the internet. "While the system was secure, we could not guarantee consistent quality service as it was dependent on public internet usage which we had no control over. To address these shortcomings we have acquired private network circuits from Telecom. "Combined with the new equipment we can guarantee quality of service, and we expect Murupara telephone call quality to improve markedly". The improved service will also permit the Murupara, Ohope and Edgecumbe libraries to utilise our library application shared with several other Councils, an improvement on the current manual process".



Trevor Mews a chef at a local Whakatane restaurant participating in the Food Control Plan preparing a meal for diners. Food Control Plans are designed to help food premises prepare for the new food laws

## New food laws anticipated

The Council is encouraged by the willingness of registered food premises and Clubs in the district to take part in the early release of Food Control Plans (FCPs) in preparation for the anticipated new food laws.

Environmental Health Officer Lisa Millican said Whakatane District Council is one of 43 territorial authorities in the country who are working with the New Zealand Food Safety Authority (NZFSA) on its Food Control plans.

She said FCP aims to gradually introduce the concept of food businesses operating under Food Control Plans in anticipation of the new food legislation. Currently most food businesses are registered and inspected for compliance under the Food Hygiene Regulations 1974. These regulations are expected to be replaced by new food laws. Ms Millican said in anticipation of the new

legislation, businesses involved in ready to eat food i.e. restaurants, cafés, lunch bars, takeaways, Chartered Clubs and Sports Clubs are being given the opportunity of working under the Food Control Plan. "This is an exciting and challenging time for food business and Councils around the country. It is expected that the risk-based approach to manufacturing and cooking food for sale will assist in the delivery of safe and suitable food for the people of New Zealand."

NZFSA is supplying the pre-approved Food Control Plan Tool kits free of charge to participating FCP members. Further information is available on NZFSA's website [www.nzfsa.govt.nz](http://www.nzfsa.govt.nz) or you can contact Lisa Millican, Environmental Health Officer, on 07 3060539 or by email [Lisa.Millican@whakatane.govt.nz](mailto:Lisa.Millican@whakatane.govt.nz) if you have any queries or wish to register your interest in VIP.



## Exhibitions

The Museum celebrated a wonderful exhibition "Hihita and Hoani" Missionaries in Tuhoeland." which opened on Saturday 12th July. It tells the wonderful story of Sister Annie Henry (Hihita) and Reverend John Laughton (Hoani), two missionaries who lived with the Tuho people in the Urewera's in the early 20th century. This is a superb exhibition beautifully displayed thanks to the research and dedication of museum staff and the support and guidance of Reverend Wayne Te Kaawa

who also wrote the catalogue essay. Following the opening which was attended by hundreds of people, Professor Judith Binney eminent historian and winner of the 1996 Montana Book of the year award gave an excellent lecture on four Urewera chiefs to another packed audience. Rev Te Kaawa gave a floor talk on Friday 15th August. He will be further developing the theme of "Missionaries in Tuhoeland". The exhibition closes on 15 August.

## Is Wolfie or Baxter registered...?

If you are a dog owner reading this article and have not yet registered your dog(s) either in Whakatane or Murupara then you have missed out on the discount fee of \$45.00 (desexed) or \$55.00 (entire).

Dog registration forms were sent to all dog owners on the Council's database at the beginning of June and the discount fee applied until 1st August 2008. Any dogs registered after the 1st August will be at

the full fee of \$67.50 (desexed) or \$82.50 (entire). Dog owners have until the end of August to register their dogs before the Animal Control staff begin issuing fines of \$300 for failing to register. PLEASE don't place our staff in a position where we have to issue fines for non registration. Be a responsible dog owner and fulfil your obligations, as required by the Dog Control Act Legislation, and REGISTER YOUR DOG.



Photo courtesy of the Whakatane Beacon

Wendy Boyes of Thornton, winner of the Dog kennel and Run worth \$600 and food in the Council's annual early bird dog registration draw. Dog owners who registered their dogs before 1 August automatically went into the draw.





OHOPEN BEACH  
Community Board

## Ohope Beach Board challenges community to engage

Improving communications and becoming more visible within the Ohope Beach Community Board area is one of the key challenges the Board has set for itself during this triennial.

Ohope Beach Community Board chairman Chris Dohrman says the Board wants to be in tune with what the community needs and expectations are.

"We will be looking at ways to improve our communications with the Ohope Beach community. We want residents in the area to engage with the Board and become involved in community affairs by contributing to the Boards decisions making processes".

"We want to represent the views of our community and we cannot do that if we do not engage with Ohope Beach residents. Equally so, the residents must be ready and willing to speak to the Board", said Mr Dohrman. He said the Board is planning to hold community outreach days during the summer holiday period so that it can also involve non-resident ratepayers who have holiday homes in Ohope.

"It is important that the Board gets to know what the community issues are, so that we make take these to the Council for

consideration", said Mr Dohrman.

Turning to some of the Board's work, Mr Dohrman said the Board recently approved funding for the remarking of the two Ohope Tennis Club courts, and endorsed Te Runanga o Ngati Awa and the Ministry of Fisheries proposals to extend the ban (rahu) on harvesting green lipped mussels from Ohiwa Harbour for a further two years. It also heard from the Bay Artificial Reef Charitable Trust on its proposal to form an artificial reef off Moutohora (Whale) Island. The Board welcomed the installation of log deflectors across Maraetotara stream and asked to the Council to consider that some remedial work be carried out on the dunes on the western side of the stream to stop soil erosion affecting the playground area. Mr Dohrman said planning for the new 'playground' at the Waterways Subdivision was under way and the project should be completed during spring.

He said the Board had a presentation on the Level of Services and members will be working with council staff before consulting the community as part of the process to set levels of Service for the next Ten-year Plan (LTCCP).

Residents can contact the Board members:

Christine BOWERING	312-5018	027-485-2260	waughfamily5@xtra.co.nz
David BULLEY	312-5874	027-290-0297	dab1@wave.co.nz
Gerard CASEY	312-5677	027-271-9032	gerard@invigorateme.co.nz
Chris DOHRMAN (Chairman)	312-5664	021-928-086	dohrmans@xtra.co.nz
Jose HOWE	312-5766	027-693-0744	jhowe@xtra.co.nz
Hugh LOVELOCK	312-4282		clovelly@nzol.net.nz
Tony BONNE (Councillor -Ward Member)	312-4787	027-440-1126	tony_bonne@xtra.co.nz



Packing away the computers brought during the eDay last year. Pic: Courtesy Whakatane Beacon

## Get ready...eDay coming!

Whakatane and Kawerau district residents will on 4 October 2008 have another opportunity to dispose of their old PCs, computer peripherals and mobile phones at the district's second free eDay.

The drive-through event – being held at the Whakatane Recycling Park in Te Tahī St between 9am and 3pm is an opportunity for residents to clear out their garages and cupboards of computer equipment and old mobile phones, to be recycled or disposed of for free.

The eDay gives local residents the chance to dispose of their electronic waste (e-waste) quickly in an environmentally-friendly way, and aims to raise awareness about the dangers of e-waste dumped in landfills. More than 16 tonnes of obsolete computers and other related e-waste were collected at last year's eDay event

in Whakatane, contributing to the 293 tonnes collected nationally. Only computers, computer peripherals, gaming consoles and mobile phones can be disposed of in the eDay collection. Other electronic equipment including televisions will not be accepted. People are advised to wipe all data from hard drives as well as removable media such as floppy disks and PC cards before handing them over for collection.

Businesses and schools are advised to visit [www.eday.org.nz](http://www.eday.org.nz) for alternate disposal options and more information about e-waste.

For further information about eDay 2008, please contact: James Gladwin, Opus International on 07 308 0423 or Whakatane District Council on 07 306 0500

## Volunteers at the heart of road safety activities

Volunteers are the heart and lifeblood of a large proportion of projects and campaigns to promote and raise awareness of the road safety message, says Eastern Bay of Plenty Road Safety Coordinator Maurice Tooke.

"It is heartening to note that here in the Eastern Bay one of our road safety volunteers Jim Savage has been recognised and rewarded for working with the community to spread the road safety message and reduce the number of crashes on our roads".

"I wish to congratulate Jim on his being chosen as an "Unsung Hero" in the P&O, New Zealand Herald contest. He is a pleasure to work with on our Road Safety projects. And his keen interest in road safety has contributed to road safety in our region for many years".

Mr Tooke said volunteer contributions made the difference between success and

failure for many of the Eastern Bay Road Safety events over many years.

"This work is now being officially recognised and is now receiving support as part of the safe sustainable transport budget. This year (2008/2009) we have included around 2250 volunteer hours to contribute to the budget. At least 39 projects included our programme would not be possible without these volunteer contributions".

He said as safe sustainable transport is part of our social responsibility 'contracts' with each other I encourage all users of our footpaths, driveways, roads and walk/cycle ways to use them with consideration, courtesy, and civility. Mr Tooke is urging all those interested or have a passion for road safety and want to be involved to contact him at the Whakatane District Council, 306 0500 or e-mail: [mauricet@whakatane.govt.nz](mailto:mauricet@whakatane.govt.nz)



"Tag Off" team overalls

## Tag Off gets started in the District

Dealing with the tagging received \$18,400 three-year funding from the Crime Prevention Unit to help reduce and control tagging in the District.

An ecstatic Safer Communities Coordinator, Peter Lander said the funding boost for the "Tag Off" programme will see small groups of people sentenced to do community work, working on removing graffiti and tagging.

"The key ingredient is community hours will be well supervised and that the work is public. We hope that all those who have been found tagging or doing acts of vandalism will spend their community hours cleaning up tagging. Although not everyone working on "Tag Off" is a tagger."

Mr Lander said the programme will start in Whakatane town and as it develops it will spread throughout the District. "If there are any community groups interested in participating in the "Tag Off" in their areas especially the rural

community, they can contact me (Peter Lander) at the Council to get materials." People can contact the Council's Customer Services Centre with information on any tagging. Meanwhile, Mike Sabin a leading expert in drug abuse particularly Methamphetamine is scheduled to present at Trident High School to raise awareness on the negative effects of Methamphetamine. Mr Lander said people and especially parents need to become more aware of the effects of methamphetamine commonly known as "P".

"It is crucial that as a community we keep our young people away from drug abuse. Drug abuse is not only an individual family's problem but has wide social consequence." The presentation is on 26 August starting at 10am. Tickets need to be booked by email to [peterl@whakatane.govt.nz](mailto:peterl@whakatane.govt.nz) and there is a gold coin donation for adults. For more information visit: [www.methcon.co.nz](http://www.methcon.co.nz)