



OUR PLACE

# Ko Konei

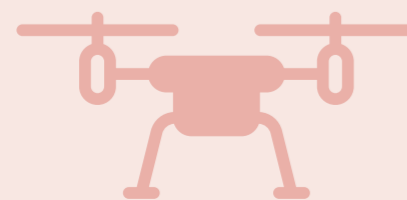
Your Whakatane District Council  
Community Update - December 2015

## Blanket approval for drone use

The Whakatane District Council's Policy Committee has adopted a recommended 'blanket approval' for operators to fly drones over Council-owned or managed public open spaces. The blanket approval means that operators do not need to notify the Council when they are flying on Council land, but still need to ensure that they comply with all Civil Aviation Authority (CAA) rules.

Committee Chairman, Mayor Tony Bonne, welcomed the "sensible and enabling approach" taken to drone use. "This allows drone enthusiasts to continue to capture the natural beauty of our District from the air, and providing they follow the guidelines, there will be no cause for any concern about aircraft safety."

Visit [whakatane.govt.nz](http://whakatane.govt.nz) to see our Guidelines for Flying Drones in the Whakatane District



## Some CBD parking limits to increase

The current one-hour parking restrictions applying to some Whakatane CBD streets and parking areas, excluding The Strand and the northern end of Boon Street, are set to be extended to two hours.

Some 128 parking places in Richardson Street, the northern end of Commerce Street and the car park to the west of the Civic Centre will be affected, with the change from a one-hour to a two-hour limit likely to be implemented before Christmas, subject to Council approval and the availability of signage. A further 66 all-day car parks (mainly parallel parking spaces) on Pyne Street will also have a two-hour limit introduced, recognising the additional all-day parking now available in the Pyne Street/O'Rourke Place parking area.



## CBD spruce-up

Whakatane District Council elected members and staff joined business owners and community members in the annual CBD Spruce-up working bee earlier this week, which was extended this year to include the Kopeopeo retail area.



## Everything under the sun GoPro Competition

Capture the Eastern Bay's energy, abundance and culture with your GoPro and win!

Simply capture and create a one minute video that you think illustrates the Eastern Bay of Plenty and our slogan, 'Everything under the sun'.

Submit your video entry to the Facebook pages of Whakatastic! and Lazer Photos & Cameras, and add a brief caption for your chance to win a share of \$750 worth of GoPro accessories and more!

More info at [whakatane.com/gopro](http://whakatane.com/gopro)



## TOP 10 FREE OR LOW-COST ACTIVITIES

You don't need a lot of money to have a good time with the family this summer. Our District offers a range of sights and activities that can be enjoyed at little or no cost. Here are 10 of the best...



### WHAKATANE AQUATIC CENTRE AND MURUPARA POOL

You can swim some laps, soak in the spa, get your thrills on the hydroslide or take the toddlers paddling in the beach play area at the Whakatane Aquatic Centre. Or slap on some sunscreen and take the family along to the Murupara Pool for fun in the sun.



### GO FISHING

Head out to Thornton wharf and see if you can catch a kahawai or take a drive to Pikowai and try your hand at surfcasting. Enjoy fish and chips on the Whakatane wharf or Port Ohope as you watch your rod nod.



### WHAKATANE GARDENS

Pack a picnic and head along to the Whakatane Gardens. Enjoy the flowers in bloom or unwind your mind in the Japanese garden. Play in the playground, or join in one of the summer arts events.



### NGA TAPUWAE O TOI WALKWAY

Make the most of one of New Zealand's most scenic urban walkways. The full track includes Kohi Point Reserve, Otarawairere Bay, West End Beach, and the native bush of the Ohope and Mokorua Bush Scenic Reserves.



### VISIT TE KŌPUTU A TE WHANGA A TOI

Te Kōputu is home to the Horizon Whakatane Library, Whakatane District museum display and three gallery spaces. Explore the rich history of the Eastern Bay of Plenty and marvel at the changing art exhibitions.



### PLAYGROUNDS GALORE

Play near the beach at Māraetōtara or Mahy Reserve, watch the boats come in at Wairaka playground, or admire your kids' skills at one of the skateparks around the District.



### HISTORIC SITES

Whakatane District is rich in cultural history. Take a tour of some of the historic sites such as Muriwai's cave, Pohaturua, Wairere waterfall, Kaputerangi Reserve and Tauwhare Pa.



### ŌHOPE BEACH AND ŌTARAWAIRERE BAY

Take a walk over the hill from Ohope's West End Beach to beautiful Otarawairere Bay. Visit when the pohutukawa are in bloom and enjoy the birdsong of tui as you paddle and play.



### WARREN COLE WALKWAY

Take a stroll or a bike ride along the banks of the Whakatane River on the Warren Cole Walkway. Stop at one of the three playgrounds along the way, or enjoy a picnic in one of the riverside reserves.



### VISIT THE LIBRARY

Whether you need a good book to read on the beach, a DVD for a rainy day at home with the kids, or you want to surf the internet, the Horizon Library offers something for everyone.

## TOP EVENT PICKS for this summer

### DECEMBER 2015

**27-28 National SummerCross - Motocross**  
Family tickets from \$25 at Awakaponga Motorcross Track. Check out two days of top motorsport action with more than 500 riders across 19 classes.

### JANUARY 2016

**7-8 National Beach Volleyball Tour**  
Māraetōtara Reserve  
Featuring the best of NZ's International Beach Volleyball players.

**16 Local Wild Food Challenge**  
Mataatua te Mānuka Tutahi  
A culinary adventure competition. Bring along your best dish sourced from local wild ingredients or just come along and join in the festivities. [www.localwildfoodchallenge.com](http://www.localwildfoodchallenge.com)

**21-23 One Base Fishing Competition**  
The Whakatane Sport Fishing Club's premier event, with over \$100,000 in cash & prizes. [www.whakatanesportfishingclub.co.nz](http://www.whakatanesportfishingclub.co.nz)

### FEBRUARY

**20-28 Sunshine and a Plate**  
Celebrate summer's bounty and local delicacies with friends and family at this inaugural, week-long food festival. [www.sunshineandaplate.nz](http://www.sunshineandaplate.nz)



### MARCH

**17-20 National Surf Lifesaving Championships**  
Ohope Surf Club, Mahy Reserve  
Check out all the surf action from NZ's best at Ohope Beach.

**26 Podium Ohope Express**  
Run or walk 5, 10 or 21.1km on a flat and fast course at NZ's Most Loved Beach. [www.ohopeexpress.co.nz](http://www.ohopeexpress.co.nz)

**Avenue Q**  
DEC 3 - JAN 16  
Gateway Drive Theatre, 30 Gateway Drive  
Sesame Street meets South Park for grownups in this musical which deals with a range of topical issues of modern life in an irreverent and comical fashion.

**Summer Arts Festival**  
JAN - FEB - MARCH  
More than 20 events, including the Molly Morpeth Canaday Art Award and Exhibition, Sculpture Symposium, Kakahu Wearable Art and The Fresh Market Jazz in the Park. [www.artswakatane.co.nz](http://www.artswakatane.co.nz)

### Oxfam Trailwalker

**APRIL 2 - 3**  
Challenge yourself and challenge poverty. Put together a team to walk 50km or 100km and support Oxfam's important work in the Pacific region. [www.oxfamtrailwalker.org.nz](http://www.oxfamtrailwalker.org.nz)



Find out about these events and more at [www.whakatane.com](http://www.whakatane.com) or visit the Visitor Centre, Quay St, Whakatane.

Phone: 07 306 2030 or 0800 942 528

## Fluoridation decision in January



The decision on whether fluoridation of Whakatane District water supplies will continue, be expanded or cease will be made in January.

The Whakatane District Council's Policy Committee agreed at its meeting on 26 November that it had sufficient information to make a decision, informed by the results of the non-binding referendum carried out alongside the 2013 elections. However, the Committee will invite one representative from each side of the fluoridation debate to put forward their case in the public forum section of its next meeting on 28 January 2016.

The 2013 referendum showed that, overall, 60.5% of those who voted were in favour of fluoridation, with 39.5% against. However, there were significant differences in voting patterns between communities. Communities voting for fluoridation were: Ohope (70.5%), Whakatane (65.8%), Rangitāiki (55.8%) and Murupara-Galatea (51%); while communities voting against were Murupara - Te Urewera (84.6%), Murupara - Murupara (77.4%) and Tāneatua (53.1%).

Community views on fluoridation have been sought in the past through the use of referenda in 1995 and 2001, with both showing there was a slight majority in favour (54% in 1995 and 63% in 2001). As a result of those findings, the Council resolved to continue adding fluoride to the Whakatane and Ohope public water supply.