

Mana Whakahono ā Rohe

Prepared, proactive & partnering — Mana Whakahono ā Rohe ensures certainty for Iwi, Council, and community.

Council Briefing: 24 September 2025

Hone Patrick & Donna Cowdery



What is a Mana Whakahono ā Rohe?

Mana Whakahono ā Rohe is a tool to:

- Assist tangata whenua and local authorities to discuss, agree and record ways in which tangata whenua may participate in resource management and decision-making processes under the Resource Management Act.
- Assist local authorities to comply with obligations under the Resource Management Act, that were introduced in 2017 as a mechanism for iwi and hapū to invite councils into a structured relationship.



These agreements bring together the mana of iwi/hapū and the mana of council, setting out “how we work together.”

Legal Obligation

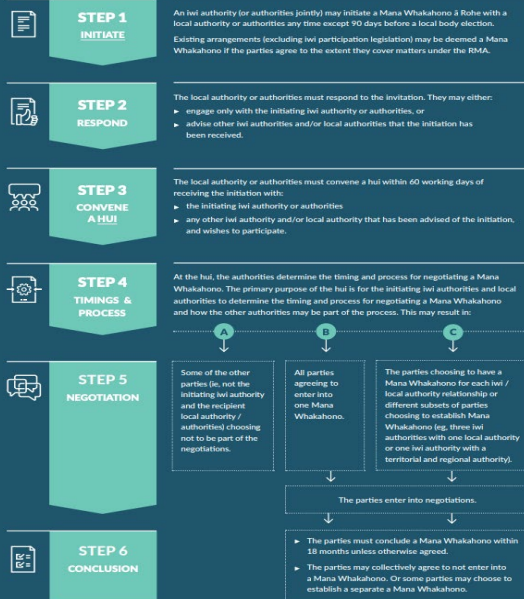
Once an iwi authority has initiated a MWaR, Council has a legal obligation under the RMA to engage in good faith and work towards concluding an agreement.

This is not optional — it is a statutory duty.

1. Initiation by iwi/hapū triggers process.
2. Council must engage in good faith.
3. Obligation to work towards conclusion.

Mana Whakahono – process snapshot

We recommend undertaking preparation work as recommended in the
How should we prepare for initiation section.



Community

Certainty in planning/resource consent processes.

Transparent and consistent engagement.

Builds trust through partnership in action.

Reduces costs and delays.

Iwi / Hapū

Formalised relationship with Council.

Processes tailored to local context.

Efficiency and reduced duplication.

Recognition under current and emerging legislation.

Council

Clear understanding of iwi/hapū priorities.

Efficient and consistent processes.

Enduring practice beyond staff changes.

Demonstrates Council's readiness and leadership.

- Ngāti Hōkopū & Te Wharepaia initiation (Nov 2023).
- Te Rūnanga o Ngāti Manawa initiation (May 2025).
- TRONM request to conclude by Oct 2025.
- BOPRC have short-form agreements in place with Ngāti Whare, Ngāti Awa and Ngāti Manawa.
- Other iwi/hapū interest signalled.



**Strengthening relationships
with iwi, hapū and whānau**

*Me mātua whakawhanake i
ngā kōtuituinga ā-iwi, ā-hapū,
ā-whānau anō hoki*

Financial and Resource Implications

- To date, negotiations have been resourced through hui attended as part of staff core duties.
- No additional financial resourcing has been required.
- Agreements strengthen relationships and create efficiencies without significant cost.
- Current staffing capacity exists within the Toi Kōtuia team and resource consents team to support the development and implementation of Mana Whakahono ā Rohe.

Outcome & Next Steps

We are seeking the following outcomes from the Council meeting on 2 October:

- **Endorsement** for Council to enter into a Mana Whakahono ā Rohe (MWaR) with Te Rūnanga o Ngāti Manawa
- **Formal approval** for the CE to finalise and sign the Mana Whakahono ā Rohe.



Strengthening relationships with iwi, hapū and whānau

Me matua whakaahanakei ngā kotuituimha a-iwi, a-hapū, a-whānau anō hoki