



Whakatāne District Open Spaces Strategy 2025–35
Te Rautaki Tarawaha o Whakatāne 2025–35

SUPPORTING DOCUMENT NGĀ TUHINGA ĀPITI

whakatane.govt.nz



MĀ KOUTOU, MĀ TĀTAU
Our People, Our Spaces





Contents

Rārangi upoko

Open Space Network Partners	4
Long Term Plan 2024-2034	7
Types of Open Space Managed by Council.....	10
Reserves Categories Standards	13
Open Space Maps.....	18
Whakatāne	19–21
Ōhope.....	22–24
Coastlands	25–27
Matatā.....	28–30
Edgecumbe.....	31–33
Murupara	34–36
Galatea	37
Te Mahoe.....	38–40
Tāneatua.....	41–43
Te Teko	44–46
Awakeri.....	47–49
Waimana	50–52
Open Space Accessibility Analysis and Commentary	53
Future Planning to inform the Open Spaces Strategy	54

Open Space Network Partners

Ngā Kōtuinga Tarawaha

The spaces that contribute to the district's rich environment extend well beyond the open spaces that Whakatāne District Council manage. Council acknowledges all who contribute to the richness of the district's open space network.

Mana Whenua

Understanding and honouring the deep connection of tangata whenua to the land will be vital in achieving the vision for the open space network. By embracing the principles of Te Tiriti o Waitangi and cultivating meaningful partnerships with mana whenua, Whakatāne district can celebrate and preserve its rich historical heritage and establish inclusive spaces that align with the values and aspirations of its diverse communities.

Marae play a crucial role for Māori. Maraes function as both physical and spiritual anchors for Māori identity, nurturing social, economic, and cultural wellbeing. These sites epitomise Māoritanga, and by their very nature, bridge the gap between the past and the present, acting as both a refuge and a place for the fullest expressions for tangata whenua.

Across the district, marae bring whanau together and provide many of the same benefits as well as additional benefits that open space does. Whakatāne District Council acknowledges the crucial roles that marae play in greatly enhancing community wellbeing.

Beyond Whakatāne, Edgecumbe, and Murupara townships, many rural and remote communities revolve around Māori traditions, centred around whānau, their hapū, and their marae. Whakatāne District Council works with seven iwi and the over 80 hapū that whakapapa to these iwi across the district:

- Ngāti Awa
- Ngāti Māhino
- Ngāti Manawa
- Ngāti Rangitahi
- Ngāi Tūhoe
- Ngāti Tūwharetoa ki Kawerau
- Ngāti Whare
- Whakatōhea

Mana whenua also have ownership or stewardship over other land that offer open space experiences through partnership. The knowledge and mahi of Māori Land Trusts across the district contribute significantly to the overall network.

The **Department of Conservation** administers some of the district's most valued and ancient open spaces, including Whirinaki Te Pua-a-Tāne.

The **Bay of Plenty Regional Council** have programmes and people who work with landowners and community groups to restore whenua and wai and improve biodiversity.

Schools, kura and education providers contribute to the open space network through the local provision of open spaces, sport fields, and playgrounds. This is particularly important in the smaller and more rural settlements.

QEII National Trust works with landowners to preserve and enhance areas of significant natural vegetation or scenic beauty.

There are valued open spaces for active recreation on private land managed by **community groups. The Onepū Mountain Bike Park is an example of this approach. The Whakatāne Mountain Bike Club manages the trails within a privately owned commercial forest. This collaboration provides open space through partnership between public and private interests.**

Community groups are also often important to achieve environmental objectives on land of all kinds of ownership.

Other groups such as Halo, and Forest and Bird contribute knowledge and resource to the district’s open spaces.

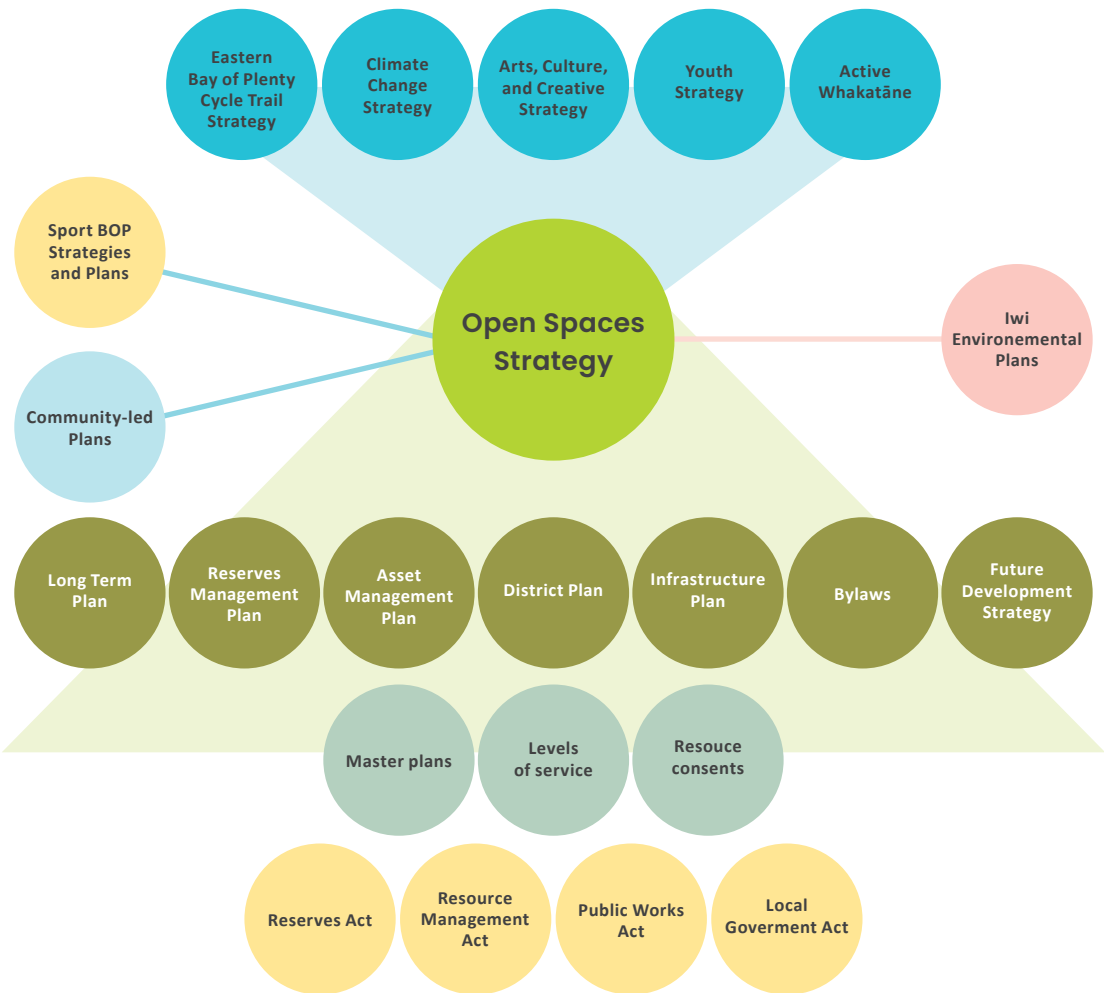
Many **private landowners** across the district are fundamental to protecting and enhancing the environment through riparian planting or protecting trees and natural environments on their property. Some work formally with organisations like the QEII National Trust, while some allow public access to open spaces on their land that connect the community to the whenua.

Finally, there are agencies and groups that contribute or advise on the district’s open spaces in many ways. These include Sport Bay of Plenty and Sport NZ, and Kawerau and Opotiki District councils - the Eastern Bay of Plenty local government partners.

Council’s Strategic Context

Te Horopaki Rautaki

This Open Space Strategy is informed by and informs a variety of strategies, plans, pieces of legislation, and other Council and community documents. The following diagram shows these relationships (as at March 2025).





Long Term Plan 2024–2034

Te Mahere Pae Tawhiti 2024–34

Council’s Long-Term Plan 2024-2034 (LTP) sets out Council’s strategic direction including the vision of ‘More life in life’. The Community Outcomes and the Strategic Priorities (below) together with the Strategy Principles, underpin the LTP and drive the priorities and projects Council is proposing over the next 10 years.

The LTP to 2034 notes the following in relation to Parks and Reserves and Community Facilities:

Parks and reserves

Activities in this group

- ▲ Parks, Reserves and Gardens
- ▶ Cemeteries

LEVELS OF SERVICE KEY	
▲	Increase
▶	Maintain

The level of service for Parks, Reserves and Gardens will increase.
The level of service for Cemeteries will be maintained.

What we do and how we do it

This group of activities provides and maintains spaces and facilities for community use, recreation, and amenities. Additionally, it manages the planning, operation, and upkeep of five Council-owned cemeteries and one crematorium. Through these efforts, we aim to enhance the quality of life and wellbeing for both residents and visitors.

Key projects

- Awatapu Lagoon Wetland construction
- Cemetery expansion and site development for a new cemetery
- Accessible play spaces



Contribution to community outcomes



Strong, connected, interdependent, diverse communities



Integrating nature into our decision making



Constructively and collaboratively engaging with iwi, hapū and whānau

Significant negative effects

There are no significant negative effects associated with the activities in this activity group.

Challenges

- Ensuring communities are safe when using parks and reserves is a key challenge for Council, addressed by effective public messaging and community partnerships.
- Vandalism is an ongoing challenge that impacts on Social and environmental wellbeing. Council tries to address this problem with education and outreach where possible, and enforcement/penalties where necessary.
- The availability of land for a new cemetery in the district is an ongoing challenge and Council continues to consider all possibilities for an effective solution.

Alignment with strategic priorities



Enhancing the safety, wellbeing, and vibrancy of communities – *Me mātua whakanui i te marutau, te oranga, me te wana o ngā hapori*

- Invest wisely in recreation, events, and the arts to have a broader range of ‘things to do’ (especially for our youth).



Shaping a green District – *Kia toitū te rohe*

- Ensure Council’s decision-making and operations reflect our environmental priorities.



Strengthening relationships with iwi, hapū and whānau – *Me mātua whakawhanake i ngā kōtuituinga ā-iwi, ā-hapū, ā-whānau anō hoki*

- Work with iwi, hapū and whānau, to improve equity and wellbeing outcomes.

Key performance indicator

For this group, we have set the following performance measures and targets. We will report on these measures in our annual reports each year to show you how we are performing against the levels of service we have said you can expect from us.

Level of Service (What you can expect from us)	Performance Measures	Results for 2022/23	TARGET - Year 1 (2024/2025)	TARGET - Year 2 (2025/2026)	TARGET - Year 3 (2026/2027)	TARGET - Year 4+ (2027-34)
We provide a variety of quality recreational and community facilities that meet community needs.	User satisfaction with cemeteries and crematorium facilities.	New measure*	77%	77%	77%	77%
	User satisfaction with recreation facilities in the Whakatāne District (sports fields, park and reserves, playgrounds).	New measure*	77%	77%	77%	77%

*This is a new measure for the Long-Term Plan 2024-34. Therefore, we do not have results from previous years to compare our targets to.



Community Facilities

Activities in this group

- ▲ Halls
- ▶ Public Conveniences

LEVELS OF SERVICE KEY

▲	Increase
▶	Maintain

The level of service for Halls will increase.

The level of service for Public Conveniences will be maintained.

What we do and how we do it*

This group of activities provides the community with access to great venues and ensures public conveniences are always available and well maintained.

* Although facilities are not in the strategy scope, it is important to note the inter-connectedness of spaces and facilities as one experience across the district.

Key projects

- Renewal work for our rural and urban halls.
- Rex Morpeth Park and War Memorial Hall redevelopment
- Public conveniences upgrade programme

Types of Open Space Managed by Council

Ngā momo tarawaha e whakahaerehia e te Kaunihera

Cemeteries and Crematorium

Council owns and administers six cemeteries. The crematorium is situated in Hillcrest Cemetery. The cemeteries are:

- Hillcrest – Whakatāne (including Crematorium)
- Taneatua
- Matatā (Awakaponga)
- Waimana
- Murupara / Galatea
- Domain Road - Whakatāne (closed)
- The Awakaponga Urupā (also known as the Matatā cemetery) is on Crown owned land and managed solely by the Awakaponga Cemetery Trustees. The Burial and Cremation Act 1964 requires Council to meet specific legal obligations.

Playgrounds

Playgrounds are located on almost every reserve and include play equipment (swings, slides, etc.), surfacing, and in some areas, shade-sails.

Sports and Recreational Facilities

These are large reserves almost exclusively used for organised sport which may contain sports fields, clubrooms and other improvements etc.

Reserves

Reserves are located across the district in urban Whakatāne, Edgecumbe, Murupara, Ōhope, Taneatua and various other rural areas. Many of these contain playground facilities (swings, slides etc.). Council has classified reserves to demonstrate their overall function. There are several classifications for reserves which are outlined below.*

Premier District reserves

Premier District Reserves are generally larger multiple-use spaces with a high amenity value and an emphasis on providing for the needs of the wider community. These reserves and open spaces provide for a range of informal recreational activities for all age groups. They may be located near or adjacent to other community facilities (e.g. libraries, halls, suburban or town centres). These generally provide easy pedestrian access, play equipment and seating, flat or gently undulating grass areas, adequate space for running and informal ball games, neighbourhood amenity, high value amenity planting, and access to open space and the natural environment.

Neighbourhood (Local and Amenity) Reserves

Neighbourhood (local and amenity) reserves are often located on a pedestrian/commuting route and typically bordered on several sides by houses. They may have open space that contributes to the character and amenity of the neighbourhood through provision of pockets of open space and/or sites for amenity trees and other vegetation. They may contain no built infrastructure but may provide neighbourhood amenity alongside a specific function (such as a playground, pedestrian and/or cycle access, or a dog exercise area). Council designs these open spaces primarily for the local residential community

District Sport and Recreation Reserves

District sport and recreation reserves are spaces with the primary purpose of providing for sport and recreation and activity, recreation facilities and buildings. These open spaces often have multiple uses and values with a focus on organised recreation and sports-field and/or court provision to meet the district's needs.

* Recreation Aotearoa Reserves Categories 2017



Local Sport and Recreation Reserves

Local sport and recreation reserves are open spaces that allow for sport and recreation activity for the local community. This category allows for smaller scale and less infrastructure than the district sport and recreation reserve category. These open spaces are likely to be multiple use but generally consisting of one sports-field used by both organised sport and informal sport.

Cultural and Heritage Reserves

Cultural and heritage reserves are localities for protection of the built cultural, historical and archaeological environment to provide for commemoration, understanding, appreciation, and remembrance. These spaces often have multiple values for example – amenity and ecological value in addition to heritage or layers of historical fabric.

Significant sites:

- Kaokaoroa Street Redoubt Site
- War Memorial Shelter
- Fred Judd Crescent Reserve
- Mokorua Bush Scenic Reserve
- Commerce Street Escarpment
- Pohaturoa Bluff and Rock
- Ōtarawairere Road Lookout
- Muriwai Cave
- Pāpaka Lookout
- Kohi Point Scenic Reserve
- Paru Site
- Puketapu
- Wairere Waterfall

Natural Reserves

Natural reserves allow for the experience and/or protection of the natural environment. Types of use/value include conservation, ecological restoration/enhancement, and access to the natural environment. Activities on this space usually include walking (cycling in some areas only), information/education/interpretation, ecosystem management, and landscape protection such as some reserve land in coastal areas.

Utility and Linkage Reserves

Utility and linkage reserves includes link strip land, access-ways, drainage or other service ways where the primary purpose is to support services other than recreation such as storm water retention or other in ground infrastructure. These reserves can also provide pedestrian and/or cycling linkages and corridors between service areas, access along water-margins and areas set aside for protection of the natural environment.

Civic Amenity Open Spaces

Land adjacent to roadways/streets and other civic open space predominantly for pedestrian provision to retail and services in central business district areas. These are areas of high amenity value and usually incorporate amenity planting in and around the CBD streetscape, street furniture, sculptures/artwork etc.



Reserves Categories Standards

Ngā Paerewa Tarawaha

The table below provides information on the category standards for each of the reserve and open space categories. Urban area is defined as a settlement which has a residential zone within the District Plan in that settlement. This includes Whakatāne, Ōhope, Edgecumbe, Matatā, Te Teko, Murupara, Tāneatua, Te Mahoe and Waimana.

Categories Standards*

Category	Function standards	Quality standards	Quality standards	Accessibility standards
Premier District Reserves	<p>Larger multiple-use spaces with a high amenity value and an emphasis on providing for the needs of the wider community. Also provide cultural, visitor and event functions.</p> <ul style="list-style-type: none"> • Destination areas and playgrounds • High quality natural areas • High quality assets are provided and maintained 	<p>Quality standards vary depending on the specific reserve, but generally high-quality areas, facilities and amenities are provided.</p> <p>There are no minimum size, configuration or topography requirements but these open spaces are often large (>5,000m²) with flat topography.</p> <p>Generally premier reserves include the following amenities:</p> <ul style="list-style-type: none"> • Specialised facilities • Toilets • High standards of landscaping and amenity • Cultural connections • Large events space • Public artworks • Walking and cycling connections • Wayfinding and entry signage • Interpretive signage • Seating • Rubbish bins 	<p>No specific quantity standards or requirements.</p> <p>Council assesses the volume of Premier District Reserves on a case-by-case basis, depending on the specific open space area.</p> <p>Council may require new open space for Premier District Reserves as areas grow and needs change. Council will assess and managed these through District Plan changes, and in conjunction with the other three standards.</p>	<p>No specific accessibility standard regarding how far people should travel.</p> <p>However, spaces closer to the main population mean better utilisation, enhanced community experience, satisfaction and value for money on the investment.</p> <p>Most of current premier reserves driven by the natural environment and existing infrastructure in these locations.</p>

* Recreation Aotearoa Reserves Categories 2017

Category	Function standards	Quality standards	Quality standards	Accessibility standards
Neighbourhood (Local and Amenity) Reserves	<p>Smaller low-profile spaces often located on a pedestrian/commuting route and typically bordered on several sides by houses.</p> <ul style="list-style-type: none"> • Areas for play (particularly young children) • Passive spaces • Green environment • Amenity 	<p>Size ranging from 1,000m² to 5,000m² with an ideal size of 3,000m².</p> <p>Generally regular shape and flat topography.</p> <p>Located in residential areas and each open space is intended to serve a population of around 500 people. Require good visibility and access from adjacent roads and footpaths.</p> <p>Generally, neighbourhood reserves include the following amenities:</p> <ul style="list-style-type: none"> • Playgrounds • Landscaping • Pathways • Seating • Rubbish bins <p>May also include community and rongoā gardens.</p>	<p>1.0ha per 1,000 residents.</p> <p>This provides standard provides a higher level of open space than national benchmark established by Yardstick in 2020 which is 0.62ha per 1,000 residents.</p> <p>If this standard is not met within an area, then Council will assess the type and quantity of other open spaces within the area and if appropriate include those open spaces in the quantity standards.</p>	<p>Generally located within 500m or 10-15-minute walk of 90% of residences in urban areas as defined in Section 2.</p> <p>Rural and rural residential – no requirement and assessed for the community on a case-by-case basis.</p>
District Sport and Recreation Reserves	<p>Open spaces with the primary purpose of providing for sport and recreation and activity, as well as recreation facilities and buildings. These reserves are intended to serve everyone who lives within the district and are destinations for sport and recreation where people will travel to access them.</p> <ul style="list-style-type: none"> • Areas for organised activity • Social and community use • Local events • Themed landscape 	<p>Size requirements are specific to the sports/recreation the open space is designed for.</p> <p>Generally larger areas with regular shape and flat topography.</p> <p>Generally, District Sport and Recreation Reserves include the following amenities:</p> <ul style="list-style-type: none"> • Sports fields • Clubrooms • Public toilets and changing rooms. • Cycle stands • Carparking • Playgrounds • Pathway connections • Hard courts • Other play opportunities such as skateparks. 	<p>1.0ha per 1,000 residents</p> <p>Provision and development determined by a needs analysis (supply and demand) as outlined in the Sport NZ Guidance Document for Sports Field Development Dec 2019.</p> <p>As a comparison, Yardstick (2020) provides a national benchmark of 2.1ha per 1,000 residents.</p> <p>If this standard is not met within an area, then Council will assess the type and quantity of other open spaces within the area and if appropriate include those open spaces in the quantity standards.</p>	<p>No specific accessibility standard regarding how far people should travel.</p> <p>Ideally the closer the location to the main population the better.</p> <p>It is recognised most people will travel to sports by car or bike.</p> <p>Focus for accessibility should be on creating easy access (good vehicle accesses, good carparking, good footpath network) rather than distance travelled.</p>

Category	Function standards	Quality standards	Quality standards	Accessibility standards
Local Sport and Recreation Reserves	<p>Spaces for sport and recreation activity for the local area. Smaller scale and less infrastructure than the District Sport and Recreation category.</p> <ul style="list-style-type: none"> • Areas for organised activity • Social and community use • Local events • Themed landscape 	<p>Size requirements are specific to the particular sports/recreation the open space is designed for. Generally larger areas with regular shape and flat topography.</p> <p>Generally, Local Sport and Recreation Reserves include the following amenities:</p> <ul style="list-style-type: none"> • Sports fields • Clubrooms • Public toilets and changing rooms. • Cycle stands • Carparking • Playgrounds • Pathway connections • Hard courts • Other play opportunities such as skateparks. 	<p>2.0ha per 1,000 residents provision and development determined by a needs analysis (supply and demand) as outlined in the Sport NZ Guidance Document for Sports Field Development Dec 2019.</p> <p>As a comparison, Yardstick (2020) provides a national benchmark of 2.1ha per 1,000 residents.</p> <p>If this standard is not met within an area, then Council will assess the type and quantity of other open spaces within the area and if appropriate include those open spaces in the quantity standards.</p>	<p>No specific accessibility standard regarding how far people should travel, although it is recognised local sport reserves should be more accessible (less travel distance) than District Sport reserves.</p> <p>Ideally the closer the location to the main population the better.</p> <p>It is recognised people will travel by car, bike or walking.</p> <p>Focus for accessibility should be on creating easy access (good vehicle accesses, good carparking, good footpath network) rather than distance travelled.</p>
Cultural and Heritage Reserves	<p>Localities for protection of built cultural, historical, and archaeological environment to provide for commemoration, understanding, appreciation, and remembrance.</p> <ul style="list-style-type: none"> • Passive spaces • Green environment • Open space • Can have multiple values 	<p>Quality is case by case specific depending on the open space requirements and function.</p> <p>Development of cultural and heritage reserves and cemeteries will be appropriate to the proposed use of the site and level of expected visits.</p> <p>Restoration and enhancement work may be required.</p> <p>Generally, have larger mown grassed areas and well-maintained vegetation.</p> <p>Size, shape and topography are all dependant on the specific reserve with no set requirements.</p> <p>Indicative amenities:</p> <ul style="list-style-type: none"> • Way finding signage • Interpretive signage • Rubbish bins • Seating • Pathways. • Art and education 	<p>No specific quantity standards or requirements.</p> <p>The purpose of these reserves tends to be because of protecting a particular site due to its special characteristics and hence are to be assessed on a case-by-case basis depending on the specific open space area.</p> <p>Yardstick (2020) provides a national benchmark of 0.45ha per 1,000 residents.</p>	<p>As these reserve locations are driven by the natural, environment, cultural and heritage features there are no specific accessibility standards.</p> <p>Focus on improving connectivity, access, and functionality.</p>

Category	Function standards	Quality standards	Quality standards	Accessibility standards
Natural Reserves	<p>Areas for experience and/or protection of the natural environment. Types of use/value include conservation, ecological restoration/enhancement, and access to the natural environment, walking/cycling, information/education/interpretation, ecosystem management, low-impact recreation, and landscape protection.</p> <ul style="list-style-type: none"> Natural environment Passive spaces Green environment Amenity Open space Areas for walking 	<p>No specific size, shape or topography requirements. Generally restored or remnant native vegetation.</p> <p>Indicative amenities:</p> <ul style="list-style-type: none"> Way finding and naming signage Native vegetation Mown grass Walking track. Art and education 	<p>No specific quantity standards or requirements.</p> <p>These tend to be as a result of protecting a particular site and hence are to be assessed on a case-by-case basis depending on the specific open space area.</p> <p>Yardstick (2020) provides a national benchmark of 6.7ha per 1,000 residents.</p>	<p>As these reserve locations are driven by the natural environment there are no specific accessibility standards.</p> <p>Focus on improving connectivity and access etc.</p>
Utility and Linkage Reserves	<p>Land containing link strips, access ways, drainage, or other service ways where their primary purpose is to support services other than recreation.</p> <ul style="list-style-type: none"> Areas for walking Passive spaces Green environment Amenity Open space 	<p>No specific size, shape, or topography requirements.</p> <p>Indicative amenities:</p> <ul style="list-style-type: none"> Way finding and naming signage High quality and durable furniture Landscaping Mown grass Walking track. <p>Yardstick (2020) provides a national median benchmark of 1088m of walking path and tracks per 1,000 residents.</p>	<p>No specific quantity standards or requirements. These open spaces are typically acquired as part of infrastructure or to enable access.</p> <p>Yardstick (2020) provides a national benchmark of 2.92ha per 1,000 residents.</p>	<p>As these reserve locations are driven by the natural environment and infrastructure there are no specific accessibility standards.</p>

Category	Function standards	Quality standards	Quality standards	Accessibility standards
Civic Amenity Open Space	<p>Civic open space land adjacent to roadways/streets and the linkages between; predominantly for pedestrian provision to civic buildings, retail and commercial services in central business district areas.</p> <ul style="list-style-type: none"> • Amenity • Passive spaces • Themed landscape • Cultural linkages 	<p>No specific size, shape, or topography requirements.</p> <p>Generally high-quality amenity and maintenance to support the creation of vibrant central business district areas.</p> <p>Indicative amenities:</p> <ul style="list-style-type: none"> • Hard and soft surfaced urban space • Universal access design • Way finding and naming signage • Interpretive signage • High quality and durable furniture • Well maintained landscaping • Toilets • Rubbish bins • Public art • Multiple transport modes supported 	<p>No specific quantity standards or requirements.</p> <p>Assessed on a case-by-case basis depending on the specific open space area.</p>	<p>Specifically located around the central business district and urban/retail areas. No specific accessibility standards.</p>

Open Space Maps

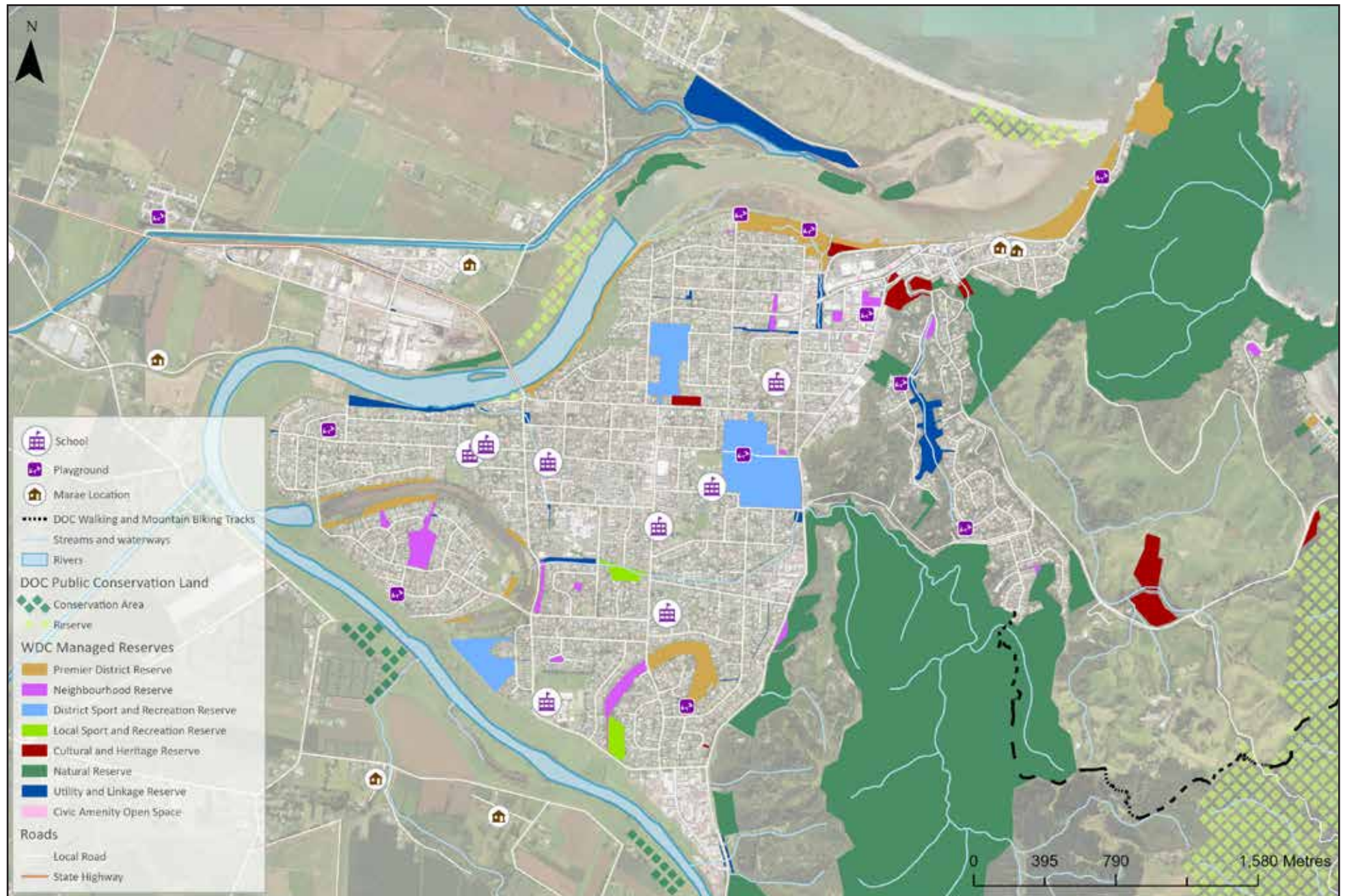
Ngā Mahere Tarawaha

The maps that follow provide an overview of the open spaces and associated amenities provided by Council and partners across the district. Primarily though, the focus is on Council-managed spaces. The maps show spaces, reserve categories and examples of 5-minute and 10-minute walk times as a metric of provision across the district's towns and villages. One of the actions in the Open Spaces Strategy is to review these provision metrics to see if they are still the best metric for Whakatāne District when considering provision into the future.

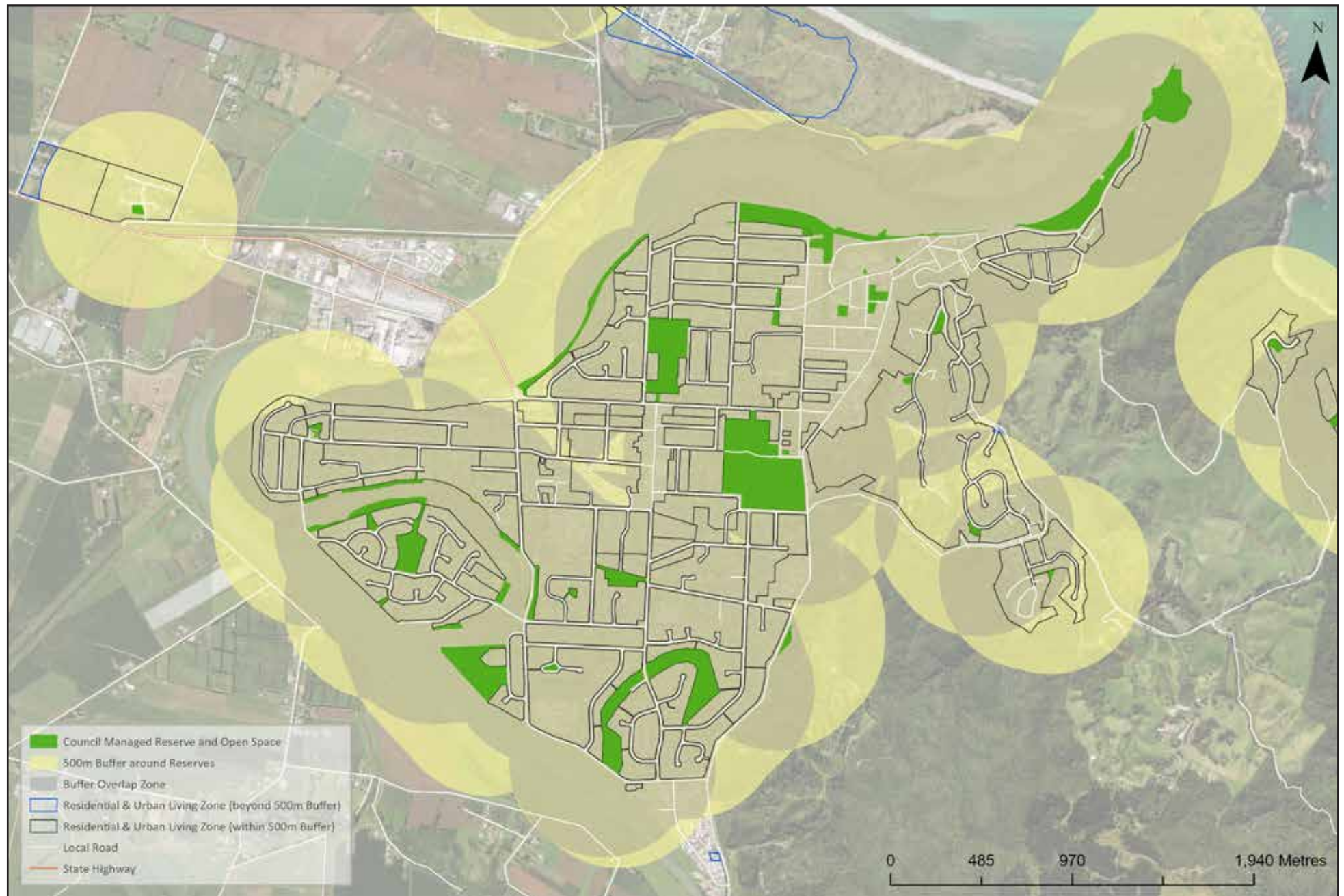
Due to the large geographical spread of some townships and their surrounding areas, accessibility ratings are only relevant for Council Residential Planning Zones, specifically the General Residential Zone, Medium Density Residential Zone and Future Urban Zone.



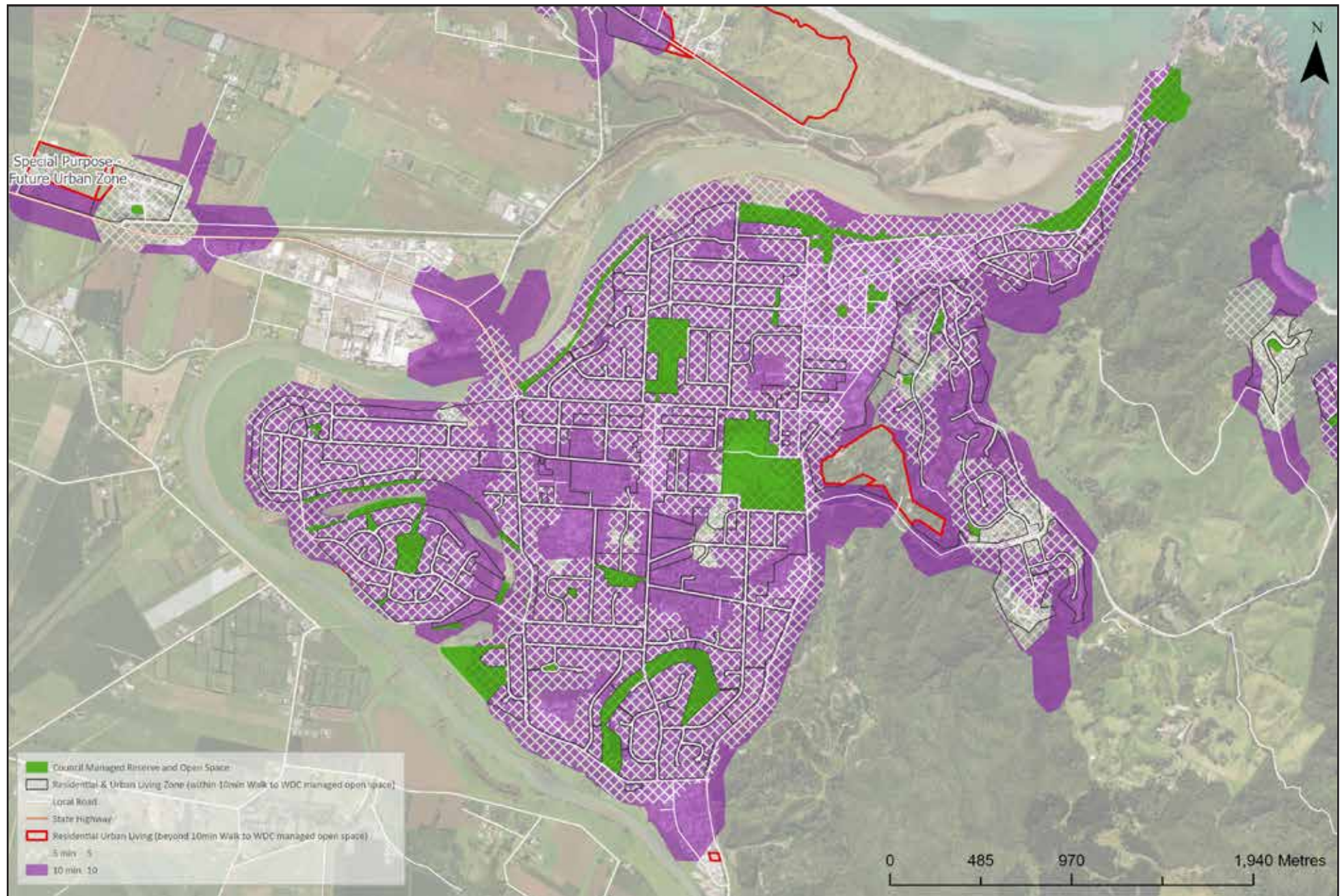
Whakatāne – Open Spaces



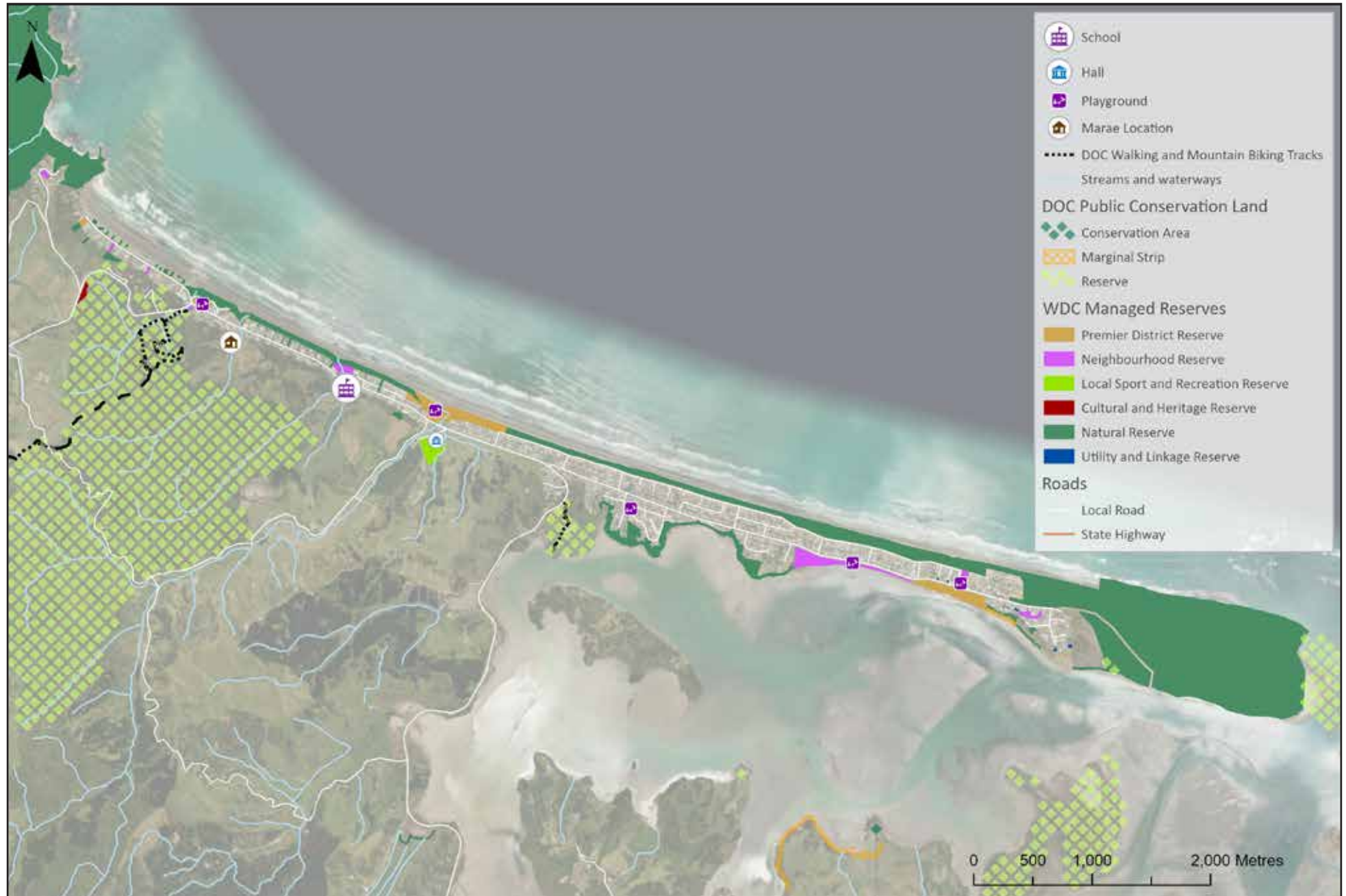
Whakatāne – Proximity to Whakatāne District Council Managed Reserves and Open Spaces



Whakatāne – Walk time to Whakatāne District Council Managed Reserves and Open Spaces



Ōhope – Open Spaces



Ōhope – Proximity to Whakatāne District Council Managed Reserves and Open Spaces



Ōhope – Walk time to Whakatāne District Council Managed Reserves and Open Spaces



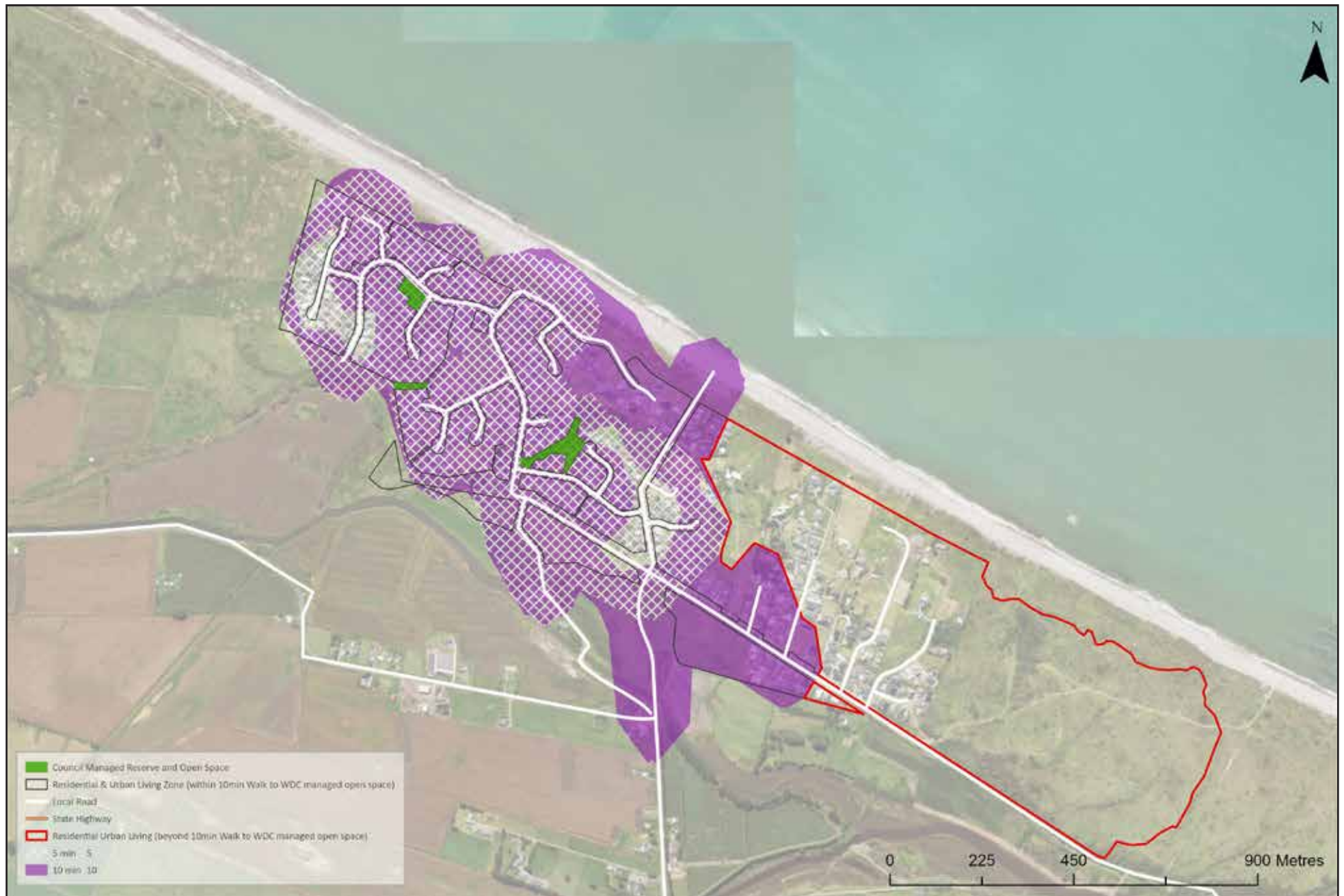
Coastlands – Open Spaces



Coastlands – Proximity to Whakatāne District Council Managed Reserves and Open Spaces



Coastlands – Walk time to Whakatāne District Council Managed Reserves and Open Spaces



Matatā – Open Spaces



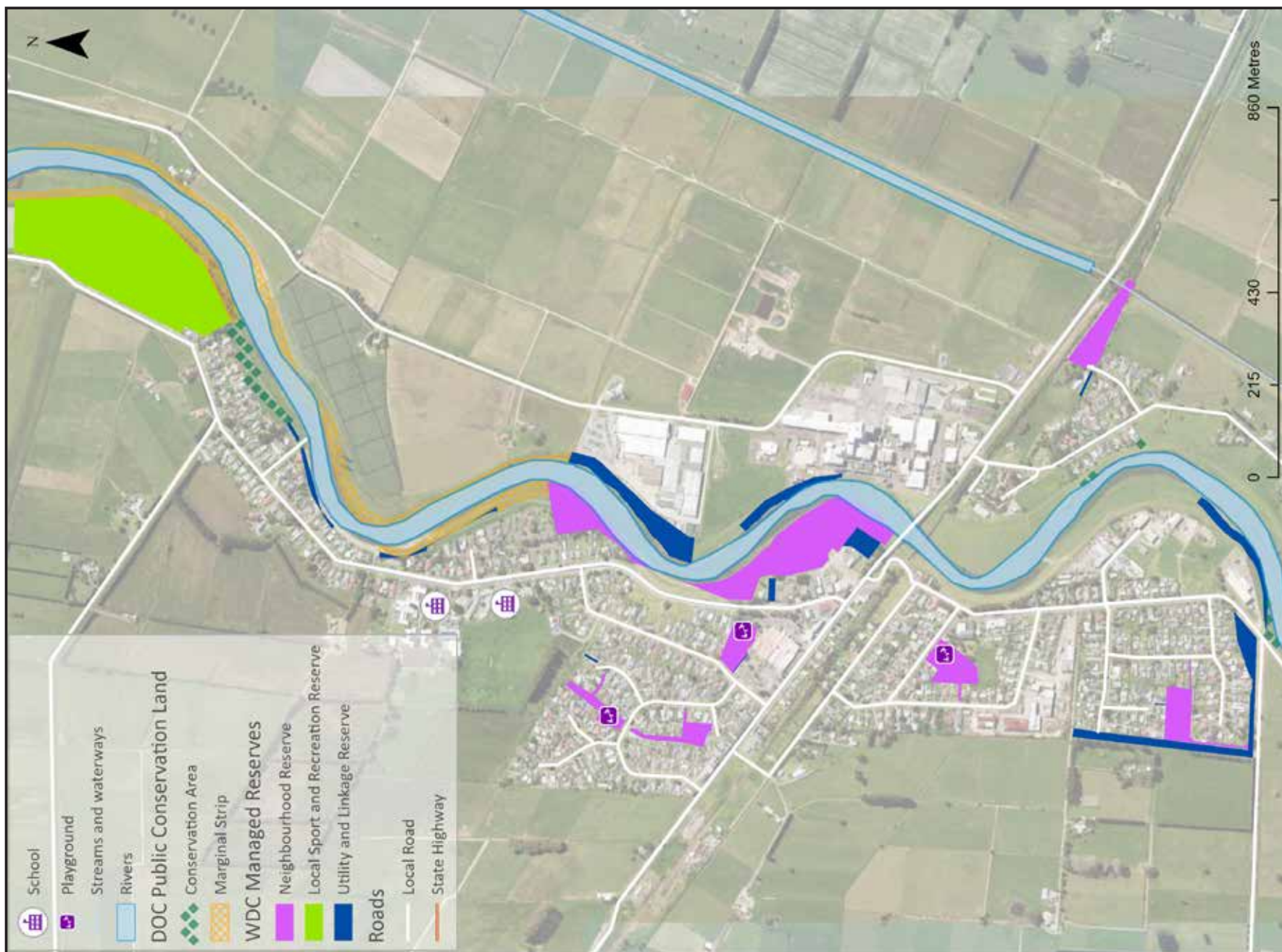
Matatā – Proximity to Whakatāne District Council Managed Reserves and Open Spaces



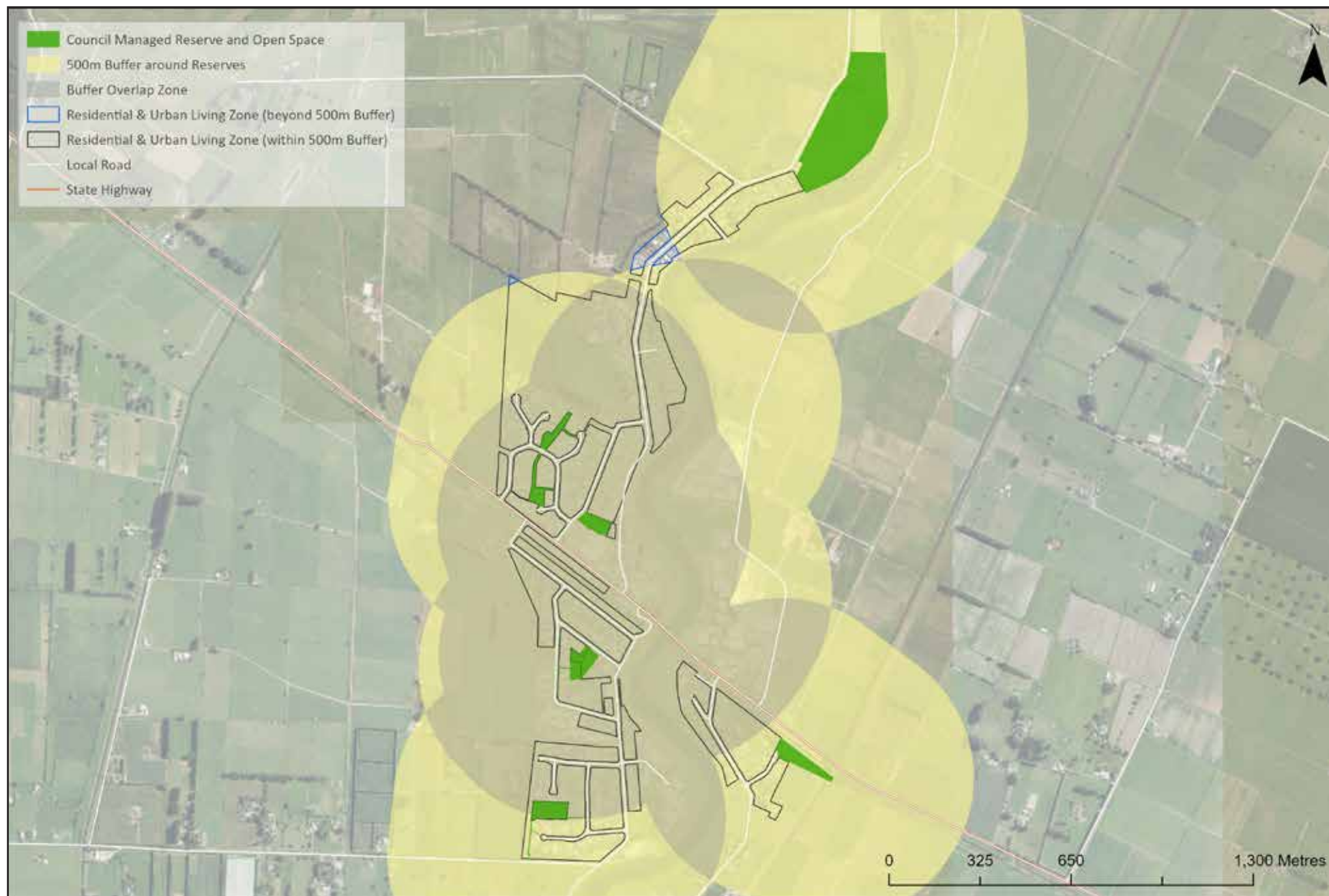
Matatā – Walk time to Whakatāne District Council Managed Reserves and Open Spaces



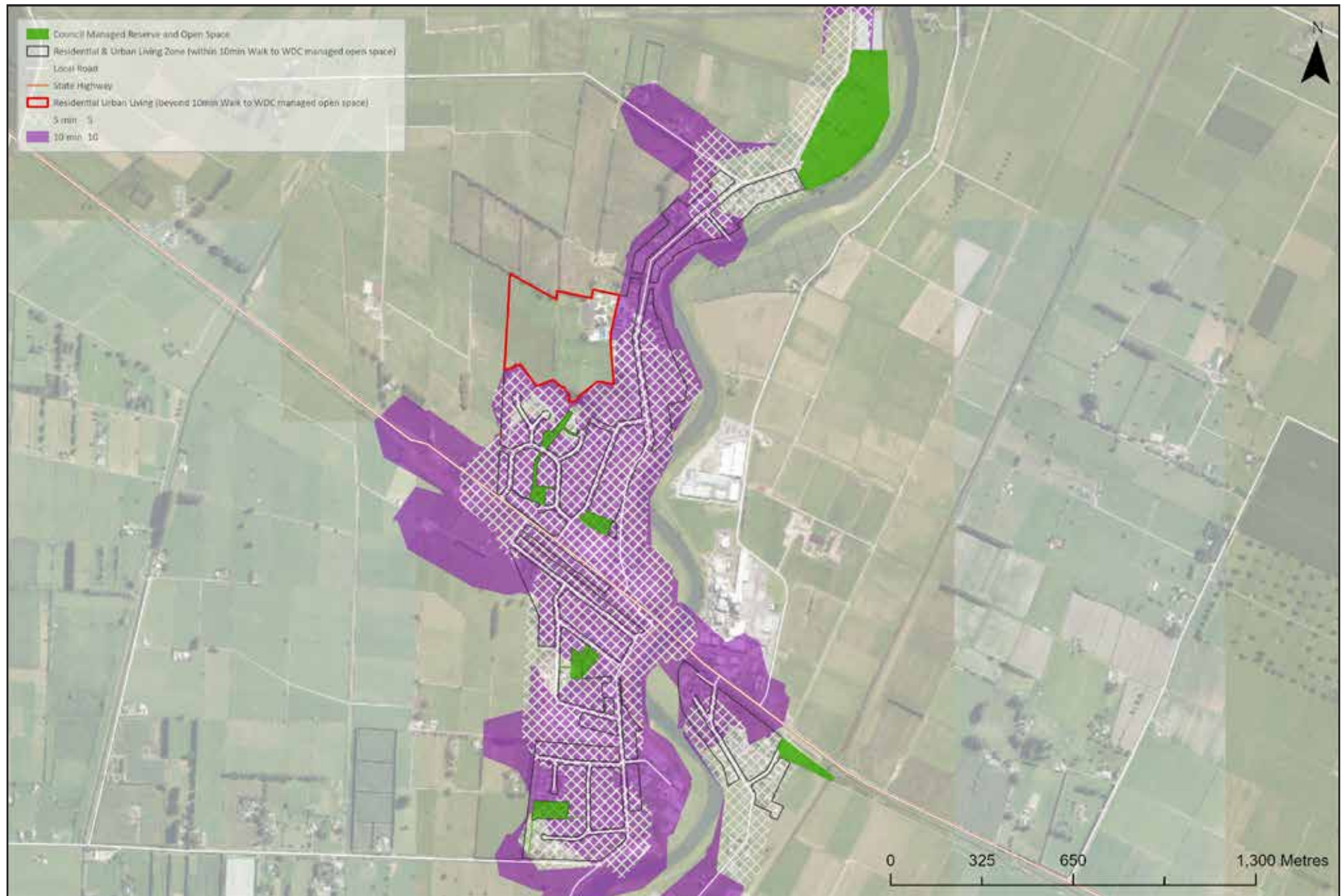
Edgecumbe – Open Spaces



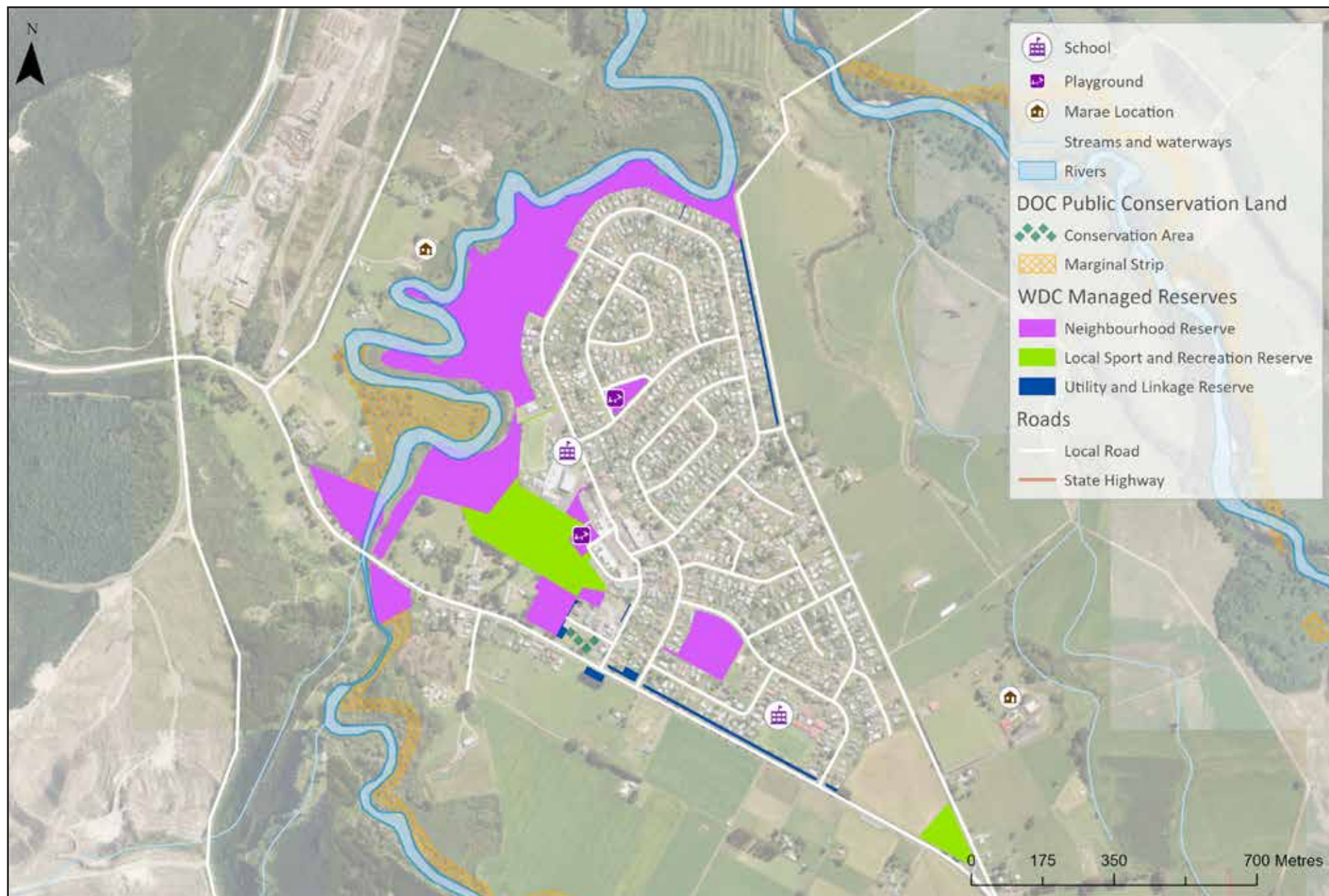
Edgecumbe – Proximity to Whakatāne District Council Managed Reserves and Open Spaces



Edgecumbe – Walk time to Whakatāne District Council Managed Reserves and Open Spaces



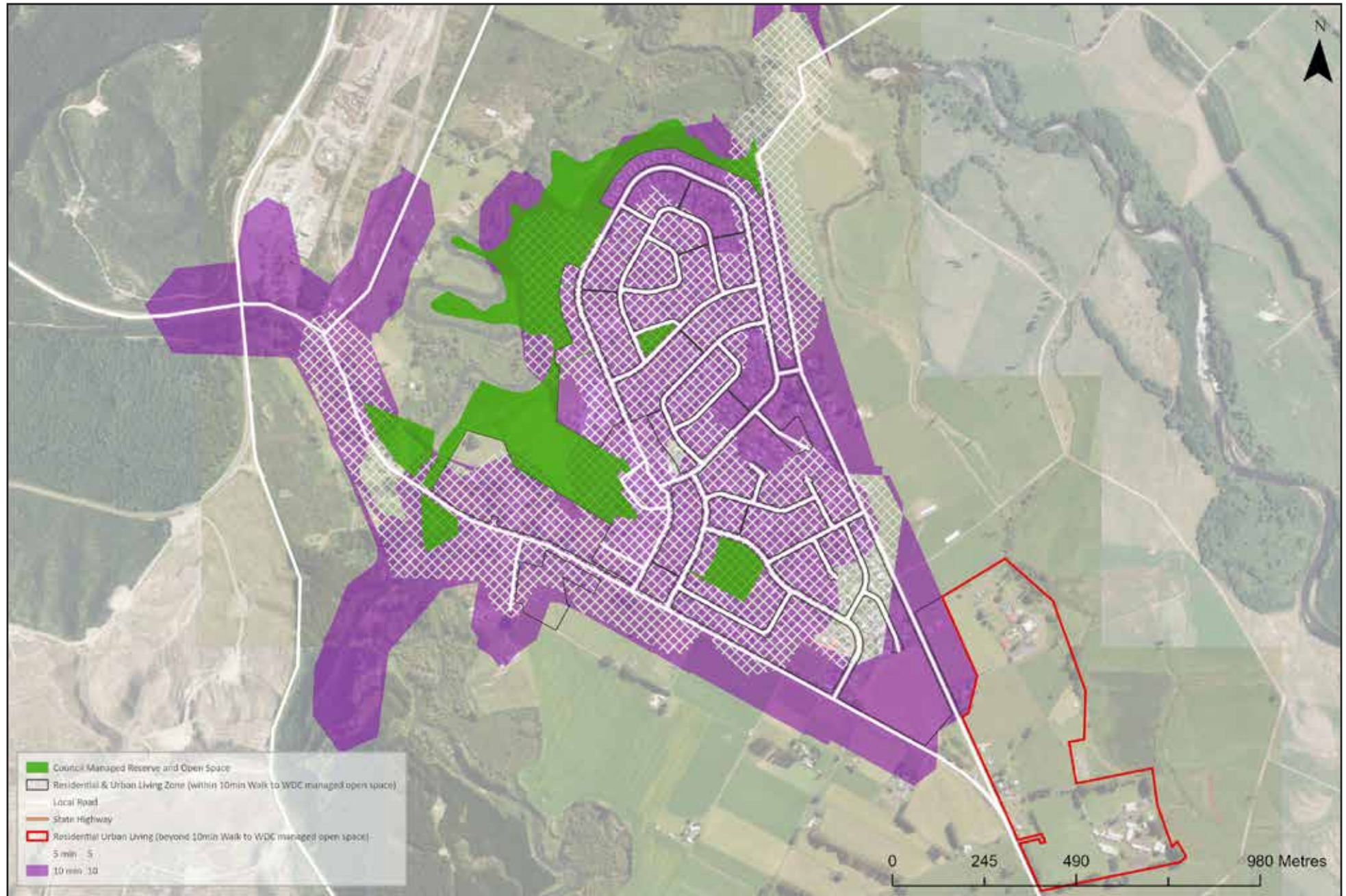
Murupara – Open Spaces



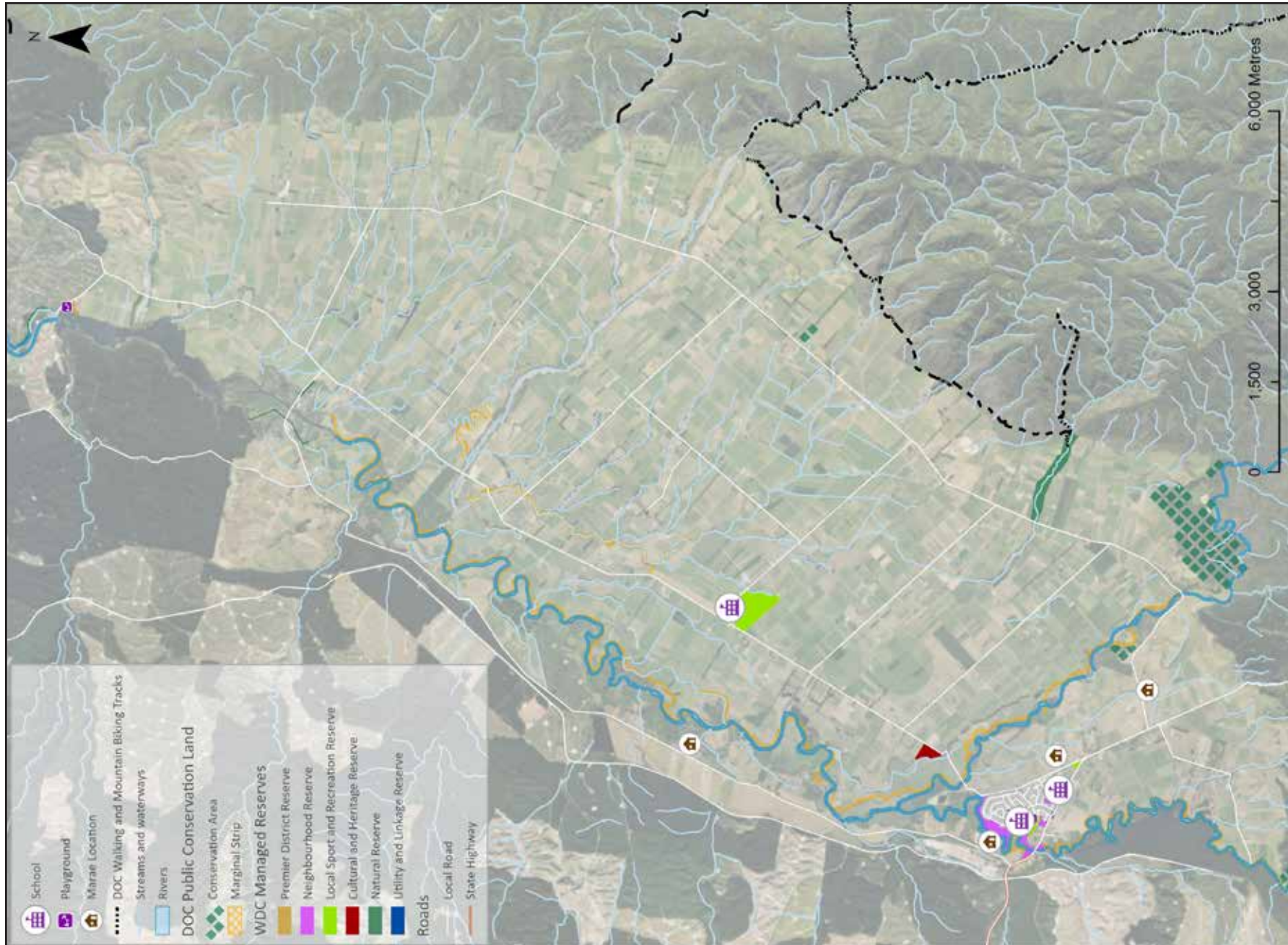
Murupara – Proximity to Whakatāne District Council Managed Reserves and Open Spaces



Murupara – Walk time to Whakatāne District Council Managed Reserves and Open Spaces



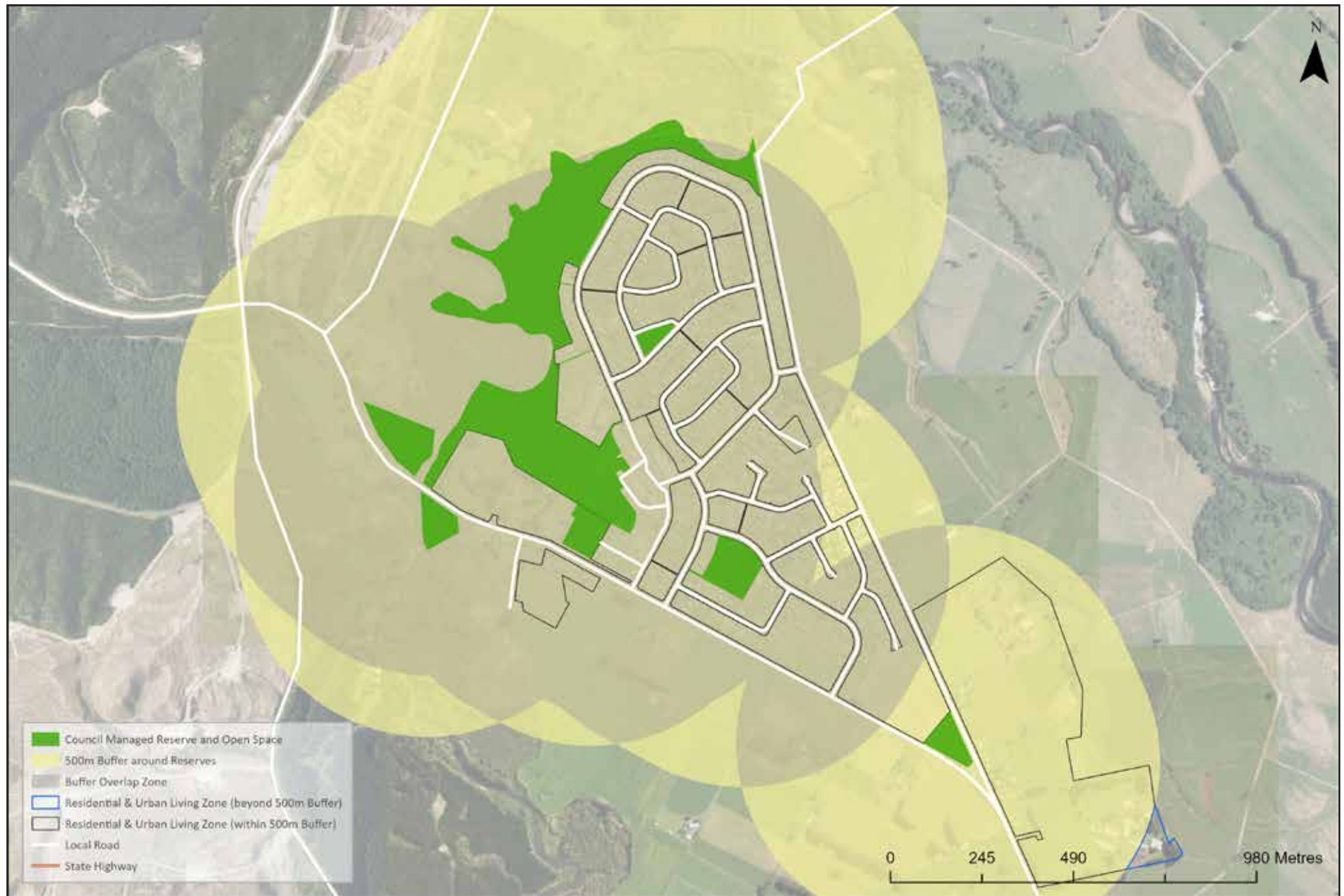
Galatea – Open Spaces



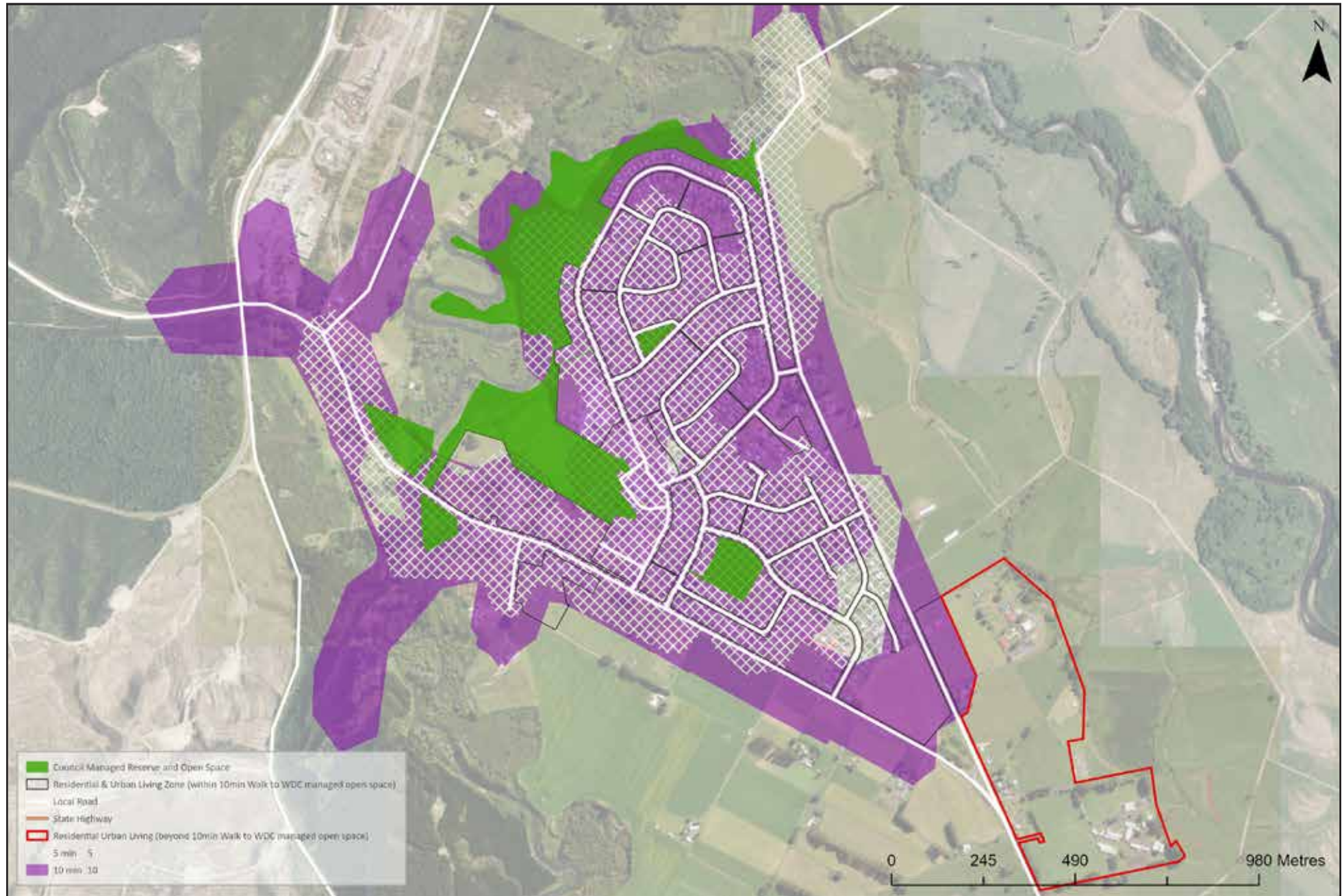
Te Mahoe – Open Spaces



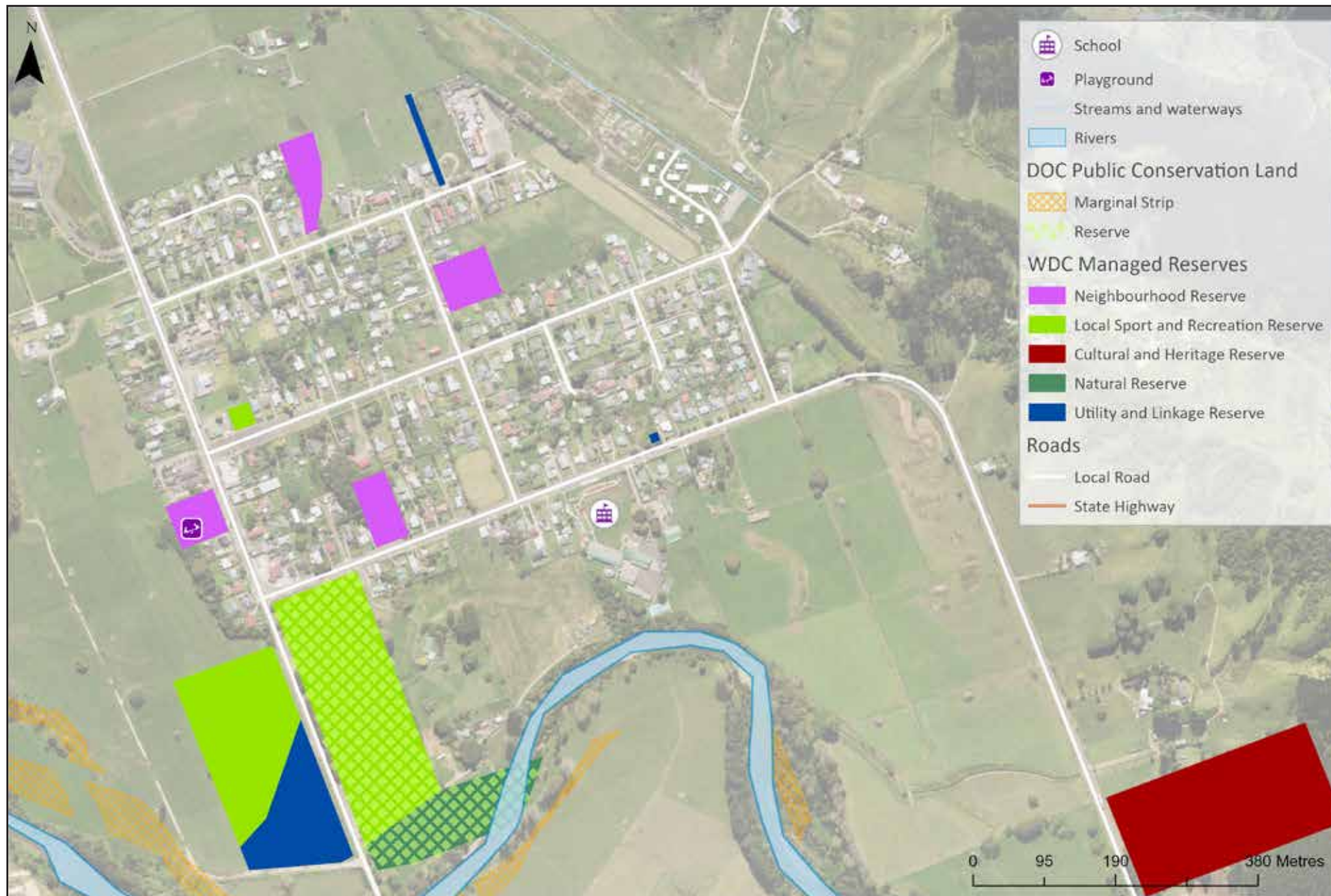
Te Mahoe – Proximity to Whakatāne District Council Managed Reserves and Open Spaces



Te Mahoe – Walk time to Whakatāne District Council Managed Reserves and Open Spaces



Tāneatua – Open Spaces



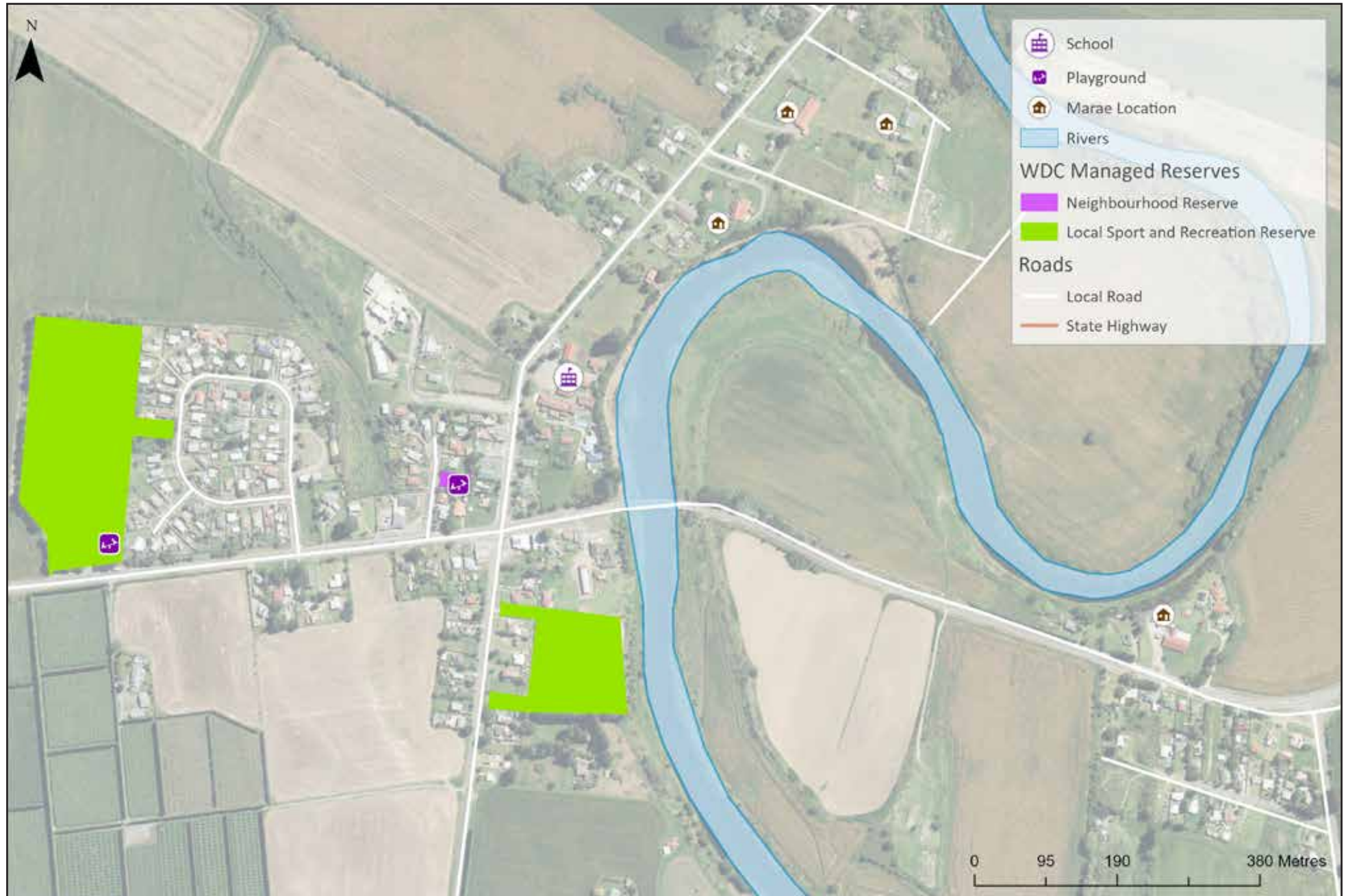
Tāneatua – Proximity to Whakatāne District Council Managed Reserves and Open Spaces



Tāneatua – Walk time to Whakatāne District Council Managed Reserves and Open Spaces



Te Teko – Open Spaces



Te Teko – Proximity to Whakatāne District Council Managed Reserves and Open Spaces



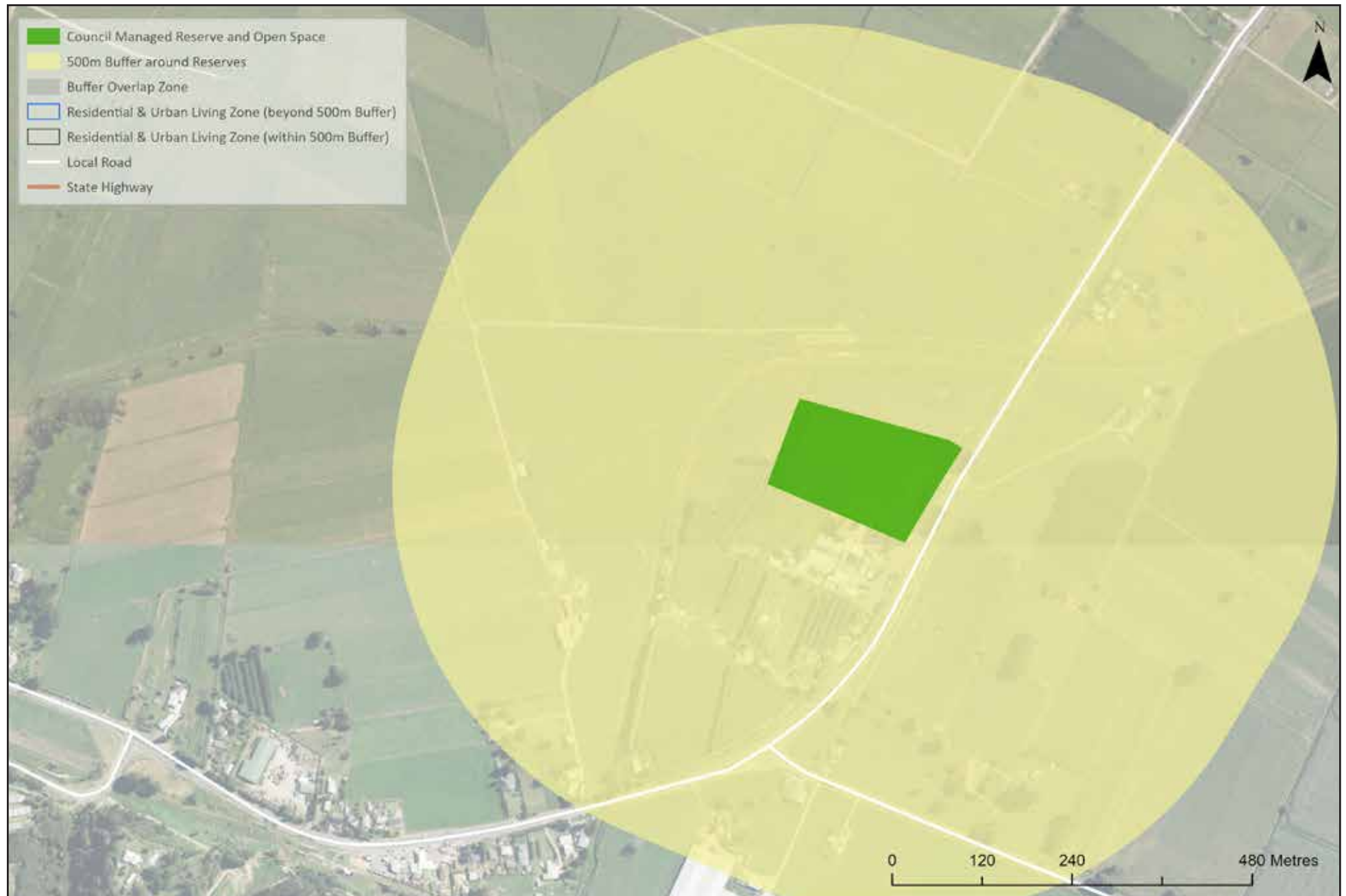
Te Teko – Walk time to Whakatāne District Council Managed Reserves and Open Spaces



Awakeri – Open Spaces



Awakeri – Proximity to Whakatāne District Council Managed Reserves and Open Spaces



Awakeri – Walk time to Whakatāne District Council Managed Reserves and Open Spaces



Waimana – Open Spaces



Waimana – Proximity to Whakatāne District Council Managed Reserves and Open Spaces



Waimana – Walk time to Whakatāne District Council Managed Reserves and Open Spaces



Open Space Accessibility Analysis and Commentary

Te Tātaritanga Āheinga Tomopai o ngā Tarawaha

Whakatāne, Ōhope and Coastlands statistics

	Accessibility to Open Space within 500m ¹	Number of Playgrounds	Total number of reserves	Total number of hectares	Ha / 1000
Whakatāne	99%	10	168	826	42
Ōhope	89%	5			
Coastlands	79%	2			

Expected growth for region:

- Current = 19,480
- Year 2043 = 21,309
- **Estimated Growth = 1,829**

Tāneatua and Waimana statistics

	Accessibility to Open Space within 500m ¹	Number of Playgrounds	Total number of reserves	Total number of hectares	Ha / 1000
Tāneatua	100%	1	30	30.9	8
Waimana	68%	1			

Population Growth:

- Current = 4,050
- Year 2043 = 4,431
- **Estimated Growth = 381**

Murupara and Galatea statistics

	Accessibility to Open Space within 500m ¹	Number of Playgrounds	Total number of reserves	Total number of hectares	Ha / 1000
Murupara/ Galatea	97%	3	29	79	22

Population Growth:

- Current = 3,560 (combined)
- Year 2043 = 3,895
- **Estimated Growth = 335**

*** NOTE:** Due to the large geographical spread of some townships and their surrounding areas, accessibility ratings are only relevant for Council Residential Planning Zones, specifically the General Residential Zone, Medium Density Residential Zone and Future Urban Zone.

Future Planning to inform the Open Spaces Strategy

He tirohanga whakamua hei taunaki i te Rautaki Tarawaha

The outcomes of the **Regional Spatial Plan, Whakatāne Local Growth Strategy and Climate Change Risk Assessments** will inform a separate **Open Spaces Future Provision Plan** that will be prepared in 2027 to sit alongside this strategy which sets direction on:

- Expected provision metrics for provision of open space for each resident (specific to the requirements of the Whakatāne District, this might be a 500-metre /10-minute walk or another agreed metric)
- Which areas require new spaces to accommodate growth, and which areas have sufficient open spaces, and
- Priority areas in the Whakatāne District for acquisition and investment, particularly in high growth and high-density areas
- Stormwater/Recreation Reserve or linkage reserves/green corridor dual purpose guidance, based on outcomes of 'Local Water Done Well' (such as the potentials for recreation and water holding in linear parks noting anticipated increased rain events).

A full **Action and Implementation Plan** will be developed to inform the 10-year scope of the strategy. This will include updating the open spaces provision maps found above in response to any changes in provision metrics.



WHAKATĀNE DISTRICT COUNCIL

14 Commerce Street, Whakatāne 3120
Private Bag 1002, Whakatāne 3158

Email: info@whakatane.govt.nz

Phone: 07 306 0500

Website: whakatane.govt.nz

whakatane.govt.nz

SERVICE CENTRE MURUPARA

Pine Drive, Murupara
Phone: 07 366 5896