

SG, Whakatane District Council





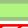






Permitted Areas for New Class 4 and Board Venue - Whakatane CBD

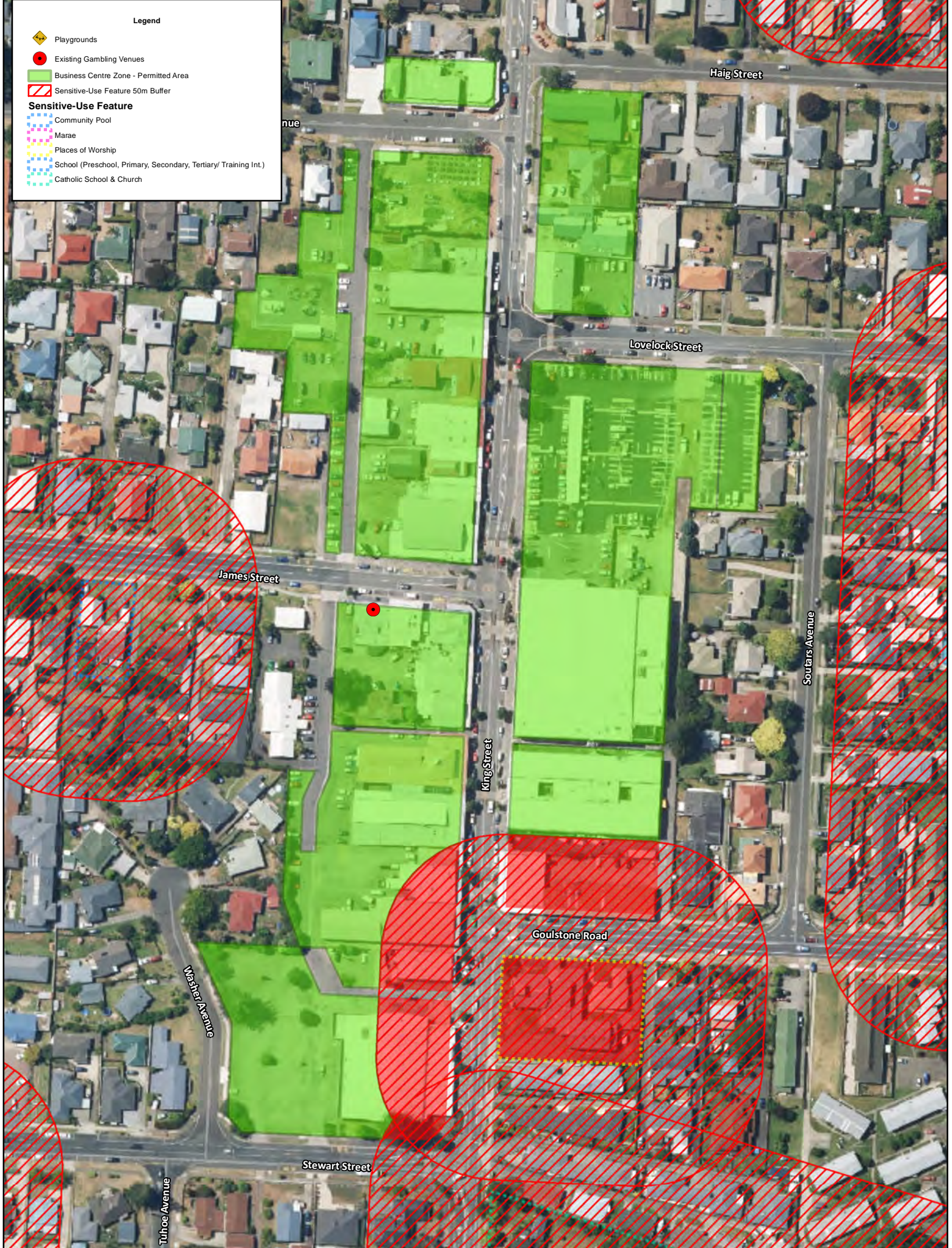
Path: G:\DATA\GIS\ArcGIS\Maps\Policy\GamblingPolicyReview2015\GamblingMap\_Landscape.mxd  
 Date of issue: 17/03/2016

Scale: 1:4,206  
 Author: CB

DISCLAIMER: While Whakatane District Council (WDC), has exercised all reasonable skill and care in controlling the contents of this information, WDC gives no warranty in relation to the material, including its accuracy, reliability and suitability and accepts no liability whatsoever in relation to any loss, damage or other costs (whether direct, indirect or consequential) relating to the use of any material, any compilations, derivative works or modifications of the material. Aerial Photography flown between 2001 and 2016, depending on the area. Parcel boundaries are to be taken as approximate only, not to be substituted for site specific survey. May contain LINZ data: Crown Copyright Reserved. Note: Place names may not conform to LINZ guidelines 2008. Position of all assets & historical sites are approximate, actual positions are to be verified on site.

**Legend**

-  Playgrounds
  -  Existing Gambling Venues
  -  Business Centre Zone - Permitted Area
  -  Sensitive-Use Feature 50m Buffer
- Sensitive-Use Feature**
-  Community Pool
  -  Marae
  -  Places of Worship
  -  School (Preschool, Primary, Secondary, Tertiary/ Training Int.)
  -  Catholic School & Church



**Permitted Areas for New Class 4 and Board Venues - Kopepeo**



Path: G:\DATA\GIS\ArcGIS\Maps\Policy\GamblingPolicyReview2015\GamblingMap\_Portrait.mxd

Scale: 1:1,893

Date of issue: 17/02/2016

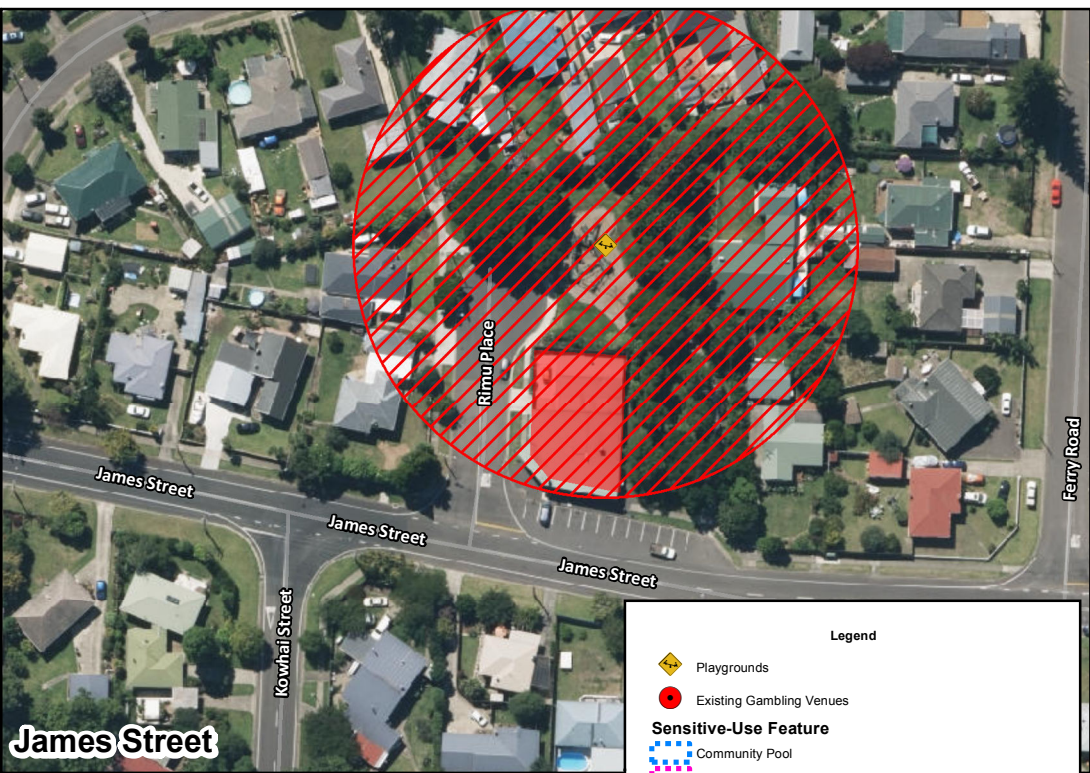
Author: <Add initials>



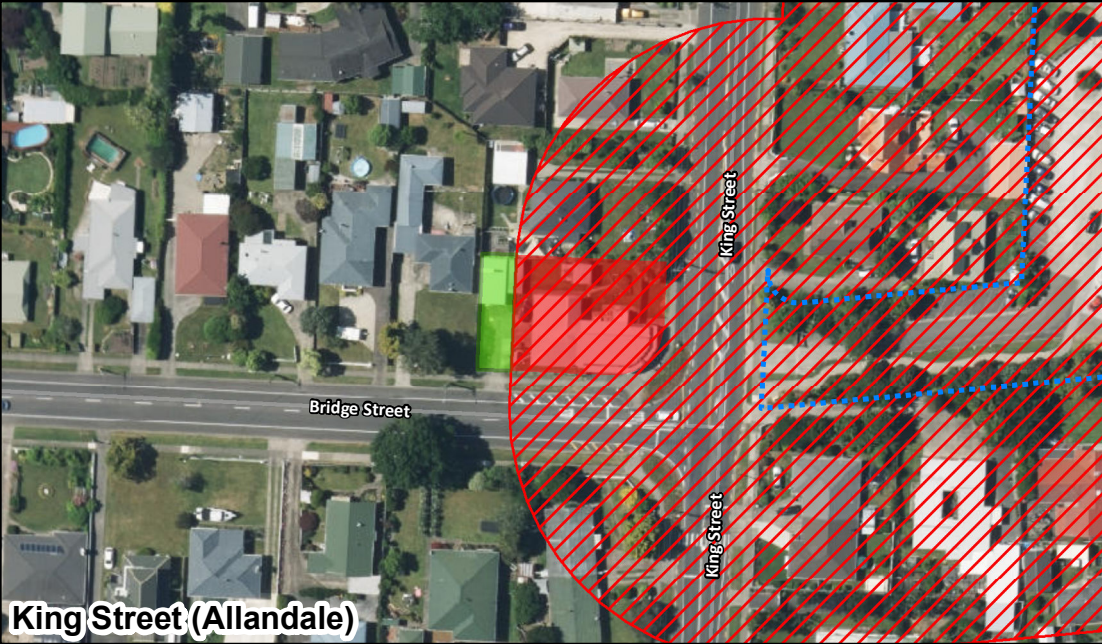
**DISCLAIMER:** While Whakatane District Council (WDC), has exercised all reasonable skill and care in controlling the contents of this information, WDC gives no warranty in relation to the material, including its accuracy, reliability and suitability and accepts no liability whatsoever in relation to any loss, damage or other costs (whether direct, indirect or consequential) relating to the use of any material, any compilations, derivative works or modifications of the material. Aerial Photography flown between 2001 and 2016, depending on the area. Parcel boundaries are to be taken as approximate only, not to be substituted for site specific survey. May contain LINZ data: Crown Copyright Reserved. Note: Place names may not conform to LINZ guidelines 2008. Position of all assets & historical sites are approximate, actual positions are to be verified on site.



**Whakatane Heads**



**James Street**



**King Street (Allandale)**



**Coastlands**

**Legend**

- Playgrounds
- Existing Gambling Venues

**Sensitive-Use Feature**

- Community Pool
- Marae
- Places of Worship
- School (Preschool, Primary, Secondary, Tertiary/ Training Int.)
- Catholic School & Church
- Business Centre Zone - Permitted Area
- Sensitive-Use Feature 50m Buffer



**Permitted Areas for New Class 4 and Board Venues - Whakatane Heads, James Street, King Street (Allandale), Coastlands**

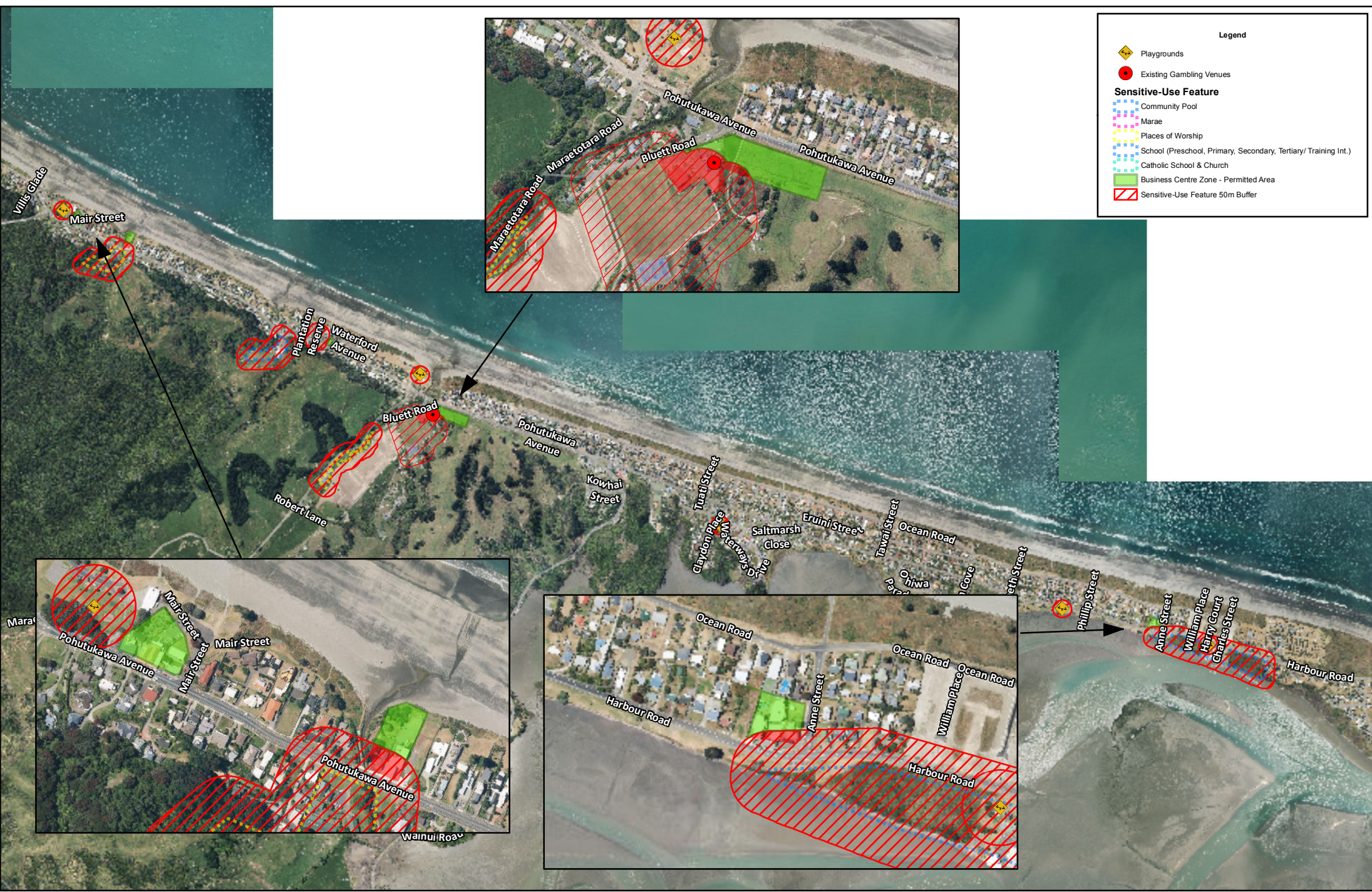
Path: G:\DATA\GIS\ArcGIS\Maps\Policy\GamblingPolicyReview2015\GamblingMap\_4Frame.mxd

Date of issue: 17/03/2016

Scale: 1:1,500

Author: CB

**DISCLAIMER:** While Whakatane District Council (WDC), has exercised all reasonable skill and care in controlling the contents of this information, WDC gives no warranty in relation to the material, including its accuracy, reliability and suitability and accepts no liability whatsoever in relation to any loss, damage or other costs (whether direct, indirect or consequential) relating to the use of any material, any compilations, derivative works or modifications of the material. Aerial Photography flown between 2001 and 2016, depending on the area. Parcel boundaries are to be taken as approximate only, not to be substituted for site specific survey. May contain LINZ data: Crown Copyright Reserved. Note: Place names may not conform to LINZ guidelines 2008. Position of all assets & historical sites are approximate, actual positions are to be verified on site.



**Legend**

- Playgrounds
- Existing Gambling Venues
- Sensitive-Use Feature**
- Community Pool
- Marae
- Places of Worship
- School (Preschool, Primary, Secondary, Tertiary/ Training Int.)
- Catholic School & Church
- Business Centre Zone - Permitted Area
- Sensitive-Use Feature 50m Buffer



**Permitted Areas for New Class 4 and Board Venues - Ohope (Pohutukawa Avenue, Bluett Road, Harbour Road)**





Path: G:\DATA\GIS\ArcGIS\Maps\Policy\GamblingPolicyReview2015\GamblingMap\_Ohope.mxd  
 Date of issue: 17/03/2016

Scale: 1:26,058  
 Author: CB




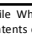
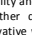
**DISCLAIMER:** While Whakatane District Council (WDC), has exercised all reasonable skill and care in controlling the contents of this information, WDC gives no warranty in relation to the material, including its accuracy, reliability and suitability and accepts no liability whatsoever in relation to any loss, damage or other costs (whether direct, indirect or consequential) relating to the use of any material, any compilations, derivative works or modifications of the material. Aerial Photography flown between 2001 and 2016, depending on the area. Parcel boundaries are to be taken as approximate only, not to be substituted for site specific survey. May contain LINZ data: Crown Copyright Reserved. Note: Place names may not conform to LINZ guidelines 2008. Position of all assets & historical sites are approximate, actual positions are to be verified on site.



**Legend**

-  Playgrounds
-  Existing Gambling Venues
-  Business Centre Zone - Permitted Area
-  Sensitive-Use Feature 50m Buffer

**Sensitive-Use Feature**

-  Community Pool
-  Marae
-  Places of Worship
-  School (Preschool, Primary, Secondary, Tertiary/ Training Int.)
-  Catholic School & Church

**Permitted Areas for New Class 4 and Board Venues - Edgumbe**



Path: G:\DATA\GIS\ArcGIS\Maps\Policy\GamblingPolicyReview2015\GamblingMap\_Portrait.mxd

Scale: 1:2,900

Date of issue: 17/02/2016

Author: <Add initials>



DISCLAIMER: While Whakatane District Council (WDC), has exercised all reasonable skill and care in controlling the contents of this information, WDC gives no warranty in relation to the material, including its accuracy, reliability and suitability and accepts no liability whatsoever in relation to any loss, damage or other costs (whether direct, indirect or consequential) relating to the use of any material, any compilations, derivative works or modifications of the material. Aerial Photography flown between 2001 and 2016, depending on the area. Parcel boundaries are to be taken as approximate only, not to be substituted for site specific survey. May contain LINZ data: Crown Copyright Reserved. Note: Place names may not conform to LINZ guidelines 2008. Position of all assets & historical sites are approximate, actual positions are to be verified on site.



**Legend**

- Playgrounds
- Existing Gambling Venues
- Business Centre Zone - Permitted Area
- Sensitive-Use Feature 50m Buffer

**Sensitive-Use Feature**

- Community Pool
- Marae
- Places of Worship
- School (Preschool, Primary, Secondary, Tertiary/ Training Int.)
- Catholic School & Church