

# FACT SHEET

## Whakatāne District Council's Local Elections 8 October 2022



### What does Council do?

The District Council meets regularly to make many decisions that impact the day-to-day lives of people in the Whakatāne District area. The Council governs a wide range of local services including roads, water systems, rubbish collection, libraries, parks, community centres, dog registration, community and economic development and district planning.

### Background

Local government elections are being held by postal vote on Saturday 8 October 2022 and will be undertaken by Election Services, under contract to the Whakatāne District Council.

The first past the post (FPP) electoral system will be used for the Whakatāne District Council elections and the Bay of Plenty Regional Council elections.

### 2022 Key dates

Nominations open	Friday, 15 July
Nominations close	Noon, Friday, 12 August
Delivery of voting packs	from Friday, 16 September
Close of voting	Noon, Saturday, 8 October
Official results announced	Thursday, 13 October

### Who is being elected?

Following the decision to establish Māori wards in 2021, Whakatāne District Council undertook a representation arrangements review (review of wards, boundaries, number of elected members etc).

As a result of this, elections will be required for the following positions:

- » Mayor
- » Councillors (10)
  - Rangitāiki General Ward (2)
  - Whakatāne-Ōhope General Ward (4)
  - Te Urewera General Ward (1)
  - Rangitāiki Māori Ward (1)
  - Kapu te rangi Māori Ward (1)
  - Toi ki Uta Māori Ward (1)
- » Community Board Members (24)

- » Murupara Community Board (6), made up of:
  - Galatea-Waiōhau Subdivision (2)
  - Murupara Subdivision (3)
  - Te Urewera Subdivision (1)
- » Rangitāiki Community Board (6)
- » Tāneatua Community Board (6)
- » Whakatāne-Ōhope Community Board (6)
- » Bay of Plenty Regional Council Members (either 2 members from the Eastern Bay of Plenty General Constituency or 1 member from the Kōhi Māori Constituency).

\* Subject to determination by the Local Government Commission, expected by 10 April 2022.

There will be no district health board elections in 2022.

### How can I be nominated?

Nominations for these positions will open on Friday, 15 July 2022 and close at noon on Friday, 12 August 2022.

Nomination papers will be available during this period:

- » from Temporary Customer Service Centre, Whakatāne District Council, 4 Commerce Street, Whakatāne;
- » Murupara Service Centre & Library, Civic Square, Pine Drive, Murupara;
- » by accessing [whakatane.govt.nz](http://whakatane.govt.nz);
- » by telephoning the electoral office on 0800 922 822.

To be eligible to stand for election, a candidate must be:

- » a New Zealand citizen (by birth or naturalisation ceremony); **and**
- » enrolled as a Parliamentary elector (anywhere in New Zealand); **and**
- » nominated by two electors whose names appear on the electoral roll within the respective area that a candidate is standing for.

A detailed candidate information handbook will be available from April 2022.

### Who can vote?

Those eligible to vote are all resident electors and non-resident ratepayer electors whose names appear on the electoral roll when it closes on Friday, 12 August 2022. The Preliminary Electoral Roll will be available for public inspection from Friday, 15 July 2022 to Friday, 12 August 2022 at the above locations.

**Resident Roll:** All parliamentary electors, including those on the Māori Electoral Roll, are automatically enrolled on the Resident Roll, at the address where they live.

Any alterations to the Resident Roll (e.g. change of address details, including new postal addresses) should be made by:

- » completing the appropriate form at any postal agency;
- » phoning 0800 ENROLNOW (0800 36 76 56)
- » accessing the Electoral Commission website on [www.vote.nz](http://www.vote.nz)

**Ratepayer Roll:** If a person is on the parliamentary roll in one area and pays rates on a property in another area, this person may be eligible to be enrolled on the non-resident ratepayer roll. A firm, company, corporation or society paying rates on a property may nominate one of its members or officers as a ratepayer elector (provided the nominated person resides outside the area). Ratepayer Roll enrolment forms are available at [whakatane.govt.nz](http://whakatane.govt.nz), or by phoning 0800 922 822.

All electors will be able to vote for the Mayor and the respective community board. Those electors on the general electoral roll will be able to vote for the respective general ward councillors and those on the Māori electoral roll will be able to vote for the respective Māori ward councillor.

## How to vote?

Voting packs will be sent out in the mail to all those who have enrolled from Friday, 16 September 2022.

The voting period is three weeks (Friday, 16 September 2022 to noon Saturday, 8 October 2022). Electors may post their completed voting documents back to the electoral officer using the orange pre-paid envelope sent with their voting document.

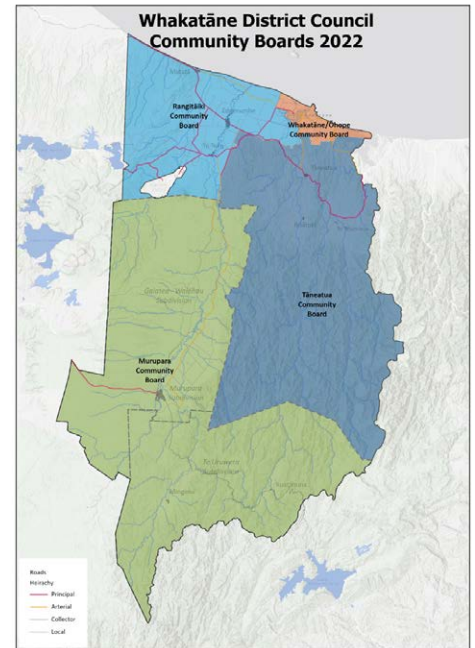
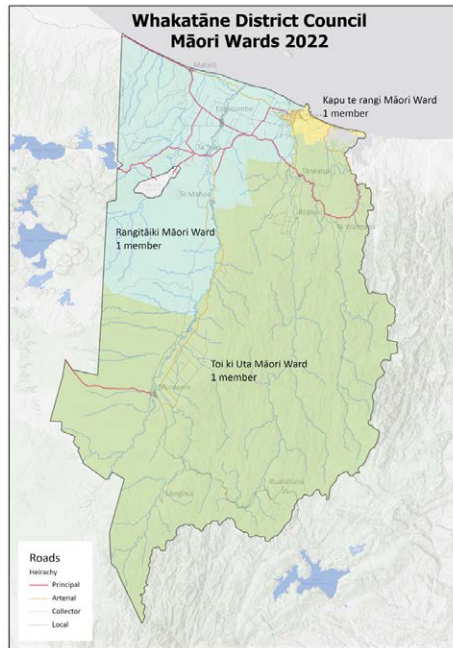
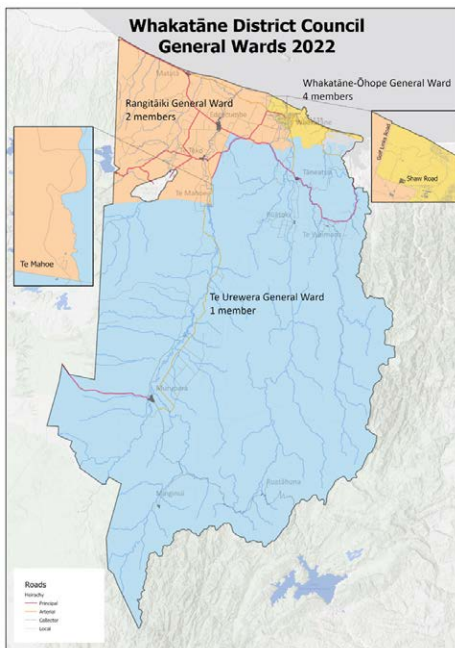
Polling places for the issuing of special voting documents and for the receiving of completed voting documents will be available from Friday, 16 September 2022 to noon Saturday, 8 October 2022 at Council's Temporary Customer Service Centre at 4 Commerce Street, Whakatāne, and from Friday, 16 September 2022 to 5pm, Friday, 7 October 2022 at the Murupara Library & Service Centre, Civic Square, Murupara.

To be counted, all completed voting documents must be in the hands of the electoral officer or an electoral official by noon Saturday, 8 October 2022.

Progress results will be known early afternoon, and preliminary results will be known on Sunday morning, 9 October 2022.

Final results will be known on Thursday, 13 October 2022, all results accessible on Council's website: [whakatane.govt.nz](http://whakatane.govt.nz)

## 2022 Whakatāne District Council Ward and Community Board maps



## Contact us



Dale Ofsoske, Electoral Officer  
Independent Election Services Ltd  
Level 2, 198 Federal Street, Auckland  
PO Box 5135, Victoria Street West, Auckland 1142  
Email: [info@electionservices.co.nz](mailto:info@electionservices.co.nz)  
Phone: 0800 922 822



Cindy Butt, Deputy Electoral Officer  
Whakatāne District Council  
4 Commerce Street,  
Whakatāne Private Bag 1002, Whakatāne 3158  
Email: [cindy.butt@whakatane.govt.nz](mailto:cindy.butt@whakatane.govt.nz)  
Phone: 07 306 0500