



RECYCLING BUILDING WASTE

Reduce construction and demolition waste in your project

It's estimated that construction and demolition waste makes up around half of all landfill waste in New Zealand. On average, building one new home creates four tonnes of waste. This is waste on a grand scale, waste of resources, waste of materials, and a waste of energy.

With support from both Whakatāne District Council and the Ministry for the Environment, Community Resources Whakatāne (CReW), is expanding its capacity to help construction companies and builders divert building and demolition waste from landfill.

How CReW can help

CReW can support your business by accepting and picking-up material which would otherwise go to landfill. This material will then be used for other builds, like DIY home-handyman projects. This reduces the amount of waste going to landfill and reduces the use of resources and energy to create new products.

Product	Cost
Pick-up service (within 10kms of CReW at 40 Te Tahī Street, Whakatāne) ¹	\$25 plus GST
Additional travel charge above 10Kms from CReW	\$1 per km plus GST
Sorted recyclable / reusable material in bags ² <i>picked up</i>	\$100 per tonne plus GST
Drop offs of sorted recyclable / reusable material	Free

¹ Picked up within two business days ² Bags will be supplied by CReW

What will CReW accept?

We'll take the following materials

Timber

Part sheets of gib (down to 300 to 600mm)

Doors and windows including framing (accepted with prior discussion)

Cabinetry (accepted with prior discussion)

Fireplaces (accepted with prior discussion)

Sanitary ware like toilets and showers

Roofing

Bricks and cobbles

We won't take

Asbestos

Clean fill

Concrete

General rubbish

Green waste

Hazardous waste

Less is more

Reducing waste in your business can bring a wide range of benefits to you.

Save money

- You will save on waste disposal costs as landfill costs continue to rise.
- Reduce costs for transport of wasted materials.

Win work

- It's becoming more important to clients to use companies that are lighter on the planet. By reducing waste, you may win more contracts from clients who want "to do the right thing".
- Improve client satisfaction and your company image.
- Encourage repeat business.

More resources

- Reducing building waste - branz.co.nz/sustainable-building/reducing-building-waste/
- Minimising waste for building and development - fightthelandfill.co.nz/building-development/

Pick-up service at construction and demolition sites available.



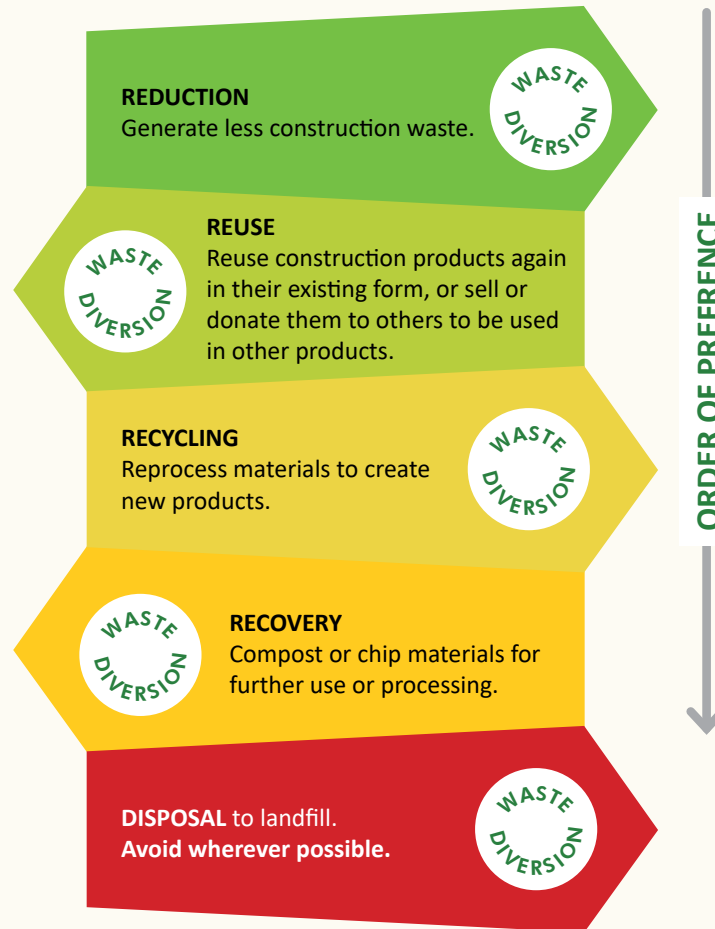
The part you can play

Avoiding and reducing the amount of waste that's produced on a build is the most efficient and cost-effective way to manage waste- as well as the best practice for the environment.

First aim to **avoid** creating waste and then work to **reduce** the amount of waste you generate.

The second priority is to recover any **reusable** materials so they can be used again to save on costs and resources.

Next work to **divert** any recyclable materials so they can be made into new products and recover any organic materials to be made into compost.



About CReW

CReW is a self-sufficient, non-profit community reuse centre for the Whakatāne region.

We are the only reuse centre in the Eastern Bay and work to divert 312 tonnes of material away from landfill annually.

If you would like to get in touch you will find us at:

Address: 40 Te Tahi Street, Whakatāne

Phone: 07 308 5963 / 027 3499775

Email: info@crewonline.org.nz

Online: crewonline.org.nz

Proudly supported by:

