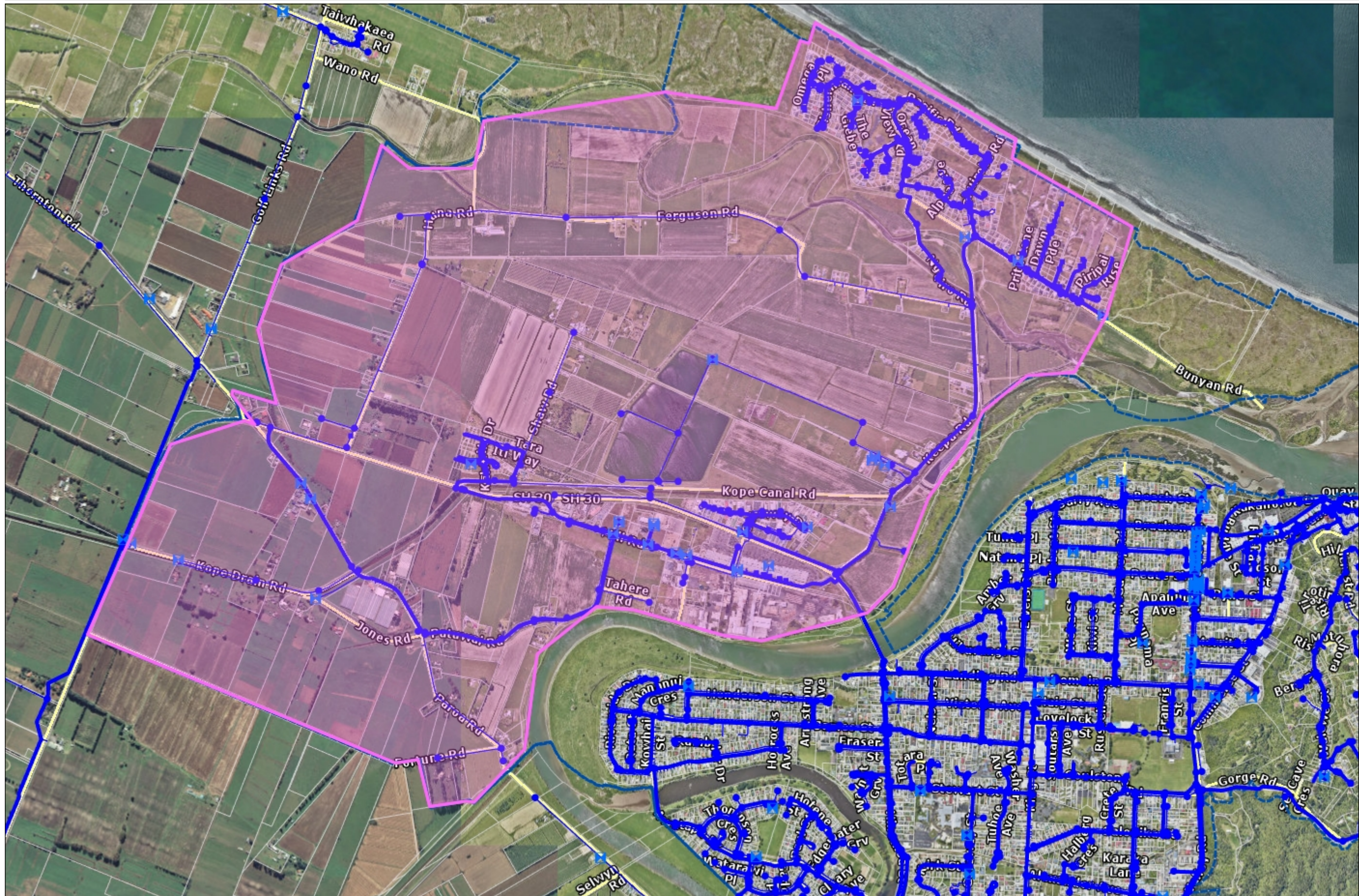


Whakatane West Affected Area

Date Printed: 26 July 2023



- Legend**
- Back Flow Preventer
 - Pump Station
 - Node
 - Toby
 - Connection
 - Main
 - Rider Main
 - Reservoir
 - Scheme
 - Parcel

SCALE 1: 18,056

917.2 0 917.2 Meters

Projection: NZGD_2000_New_Zealand_Transverse_Mercator

Prepared By:

Aerial Photography flown between 2011 and 2013, depending on the area. Parcel boundaries are to be taken as approximate only, not to be substituted for site specific survey. May contain LINZ data: Crown Copyright Reserved Note: Placenames may not conform to LINZ guidelines 2008. **DISCLAIMER:** While Whakatane District Council (WDC), has exercised all reasonable skill and care in controlling the contents of this information, WDC accepts no liability in contract, tort or otherwise howsoever, for any loss, damage, injury or expense (whether direct, indirect or consequential) arising out of the provision of this information or its use by you. *Position of all assets & historical sites are approximate, actual positions are to be verified on site.



WHAKATANE
District Council